



Start of 24/7 construction in Gatelys Road Tunnel

Coffs Harbour bypass

May 2024



Transport for NSW acknowledges the Gumbaynggirr people as the Traditional Custodians of the lands on which we work and pays respect to Elders past and present.

The Australian and NSW Governments are funding the 14-kilometre Coffs Harbour bypass project. The bypass will boost the regional economy and improve connectivity, road transport efficiency and safety for all motorists.

As part of major construction, the Coffs Harbour bypass is starting 24 hours a day, seven days per week construction work inside of tunnels.

The first tunnel we will be working in is Gatelys Road, which is located between West Korora Road and Mackays Road. This work will start from the northern end with the southern end beginning soon.

What work are we doing?

Under the project's Ministerial Conditions of Approval (MCoA), we are approved to carry out tunnel construction for extended hours. This is approved because the project will have temporary barriers at tunnel entries to minimise construction impacts to nearby residents, particularly noise.

The barrier will consist of a significant structure with large roller doors either as a freestanding structure or attached to the external portal area. The temporary barrier roller doors will be closed at 6pm and re-opened at 7am each day.

Our standard approved construction hours (excluding work behind the barrier) are Monday to Friday from 7am to 6pm and Saturdays from 8am to 1pm.

Work within the temporary barrier includes:

- Excavating and mucking out rock and soil
- Drilling
- Hammering
- Shotcreting
- Installing mechanical, electrical and other systems
- Paving and installing drainage
- Commissioning.

Work outside of the temporary barrier include:

- Operating our temporary water treatment plant
- Operating power and water sources, including using generators
- Operating workforce compound facilities
- Delivering concrete via approved haulage routes.

When and where we'll be working

We'll be working at Gatelys Road Tunnel between West Korora Road and Mackays Road from **May 2024 to May 2025** doing excavating, mucking, drilling, blasting and hammering, with installing of systems, drainage and paving plus commissioning to follow this work.

What will this mean for you?

Equipment to be used for this work includes excavators, trucks, drill rigs, shotcrete rigs, generators, water treatment plant and light vehicles. At night there will also be lighting at the compound site.

Blasting will be carried out between 7am and 6pm Monday to Friday and Saturdays from 9am to 1pm.

The expected noise level for night work is quiet.



Managing our impacts

The project's Environment Protection Licence (EPL) sets strict limits for dust and construction noise, and we carry out regular monitoring to ensure compliance.

To minimise noise impacts we switch off vehicles and equipment when not in use and position

equipment as far from residential properties as possible.

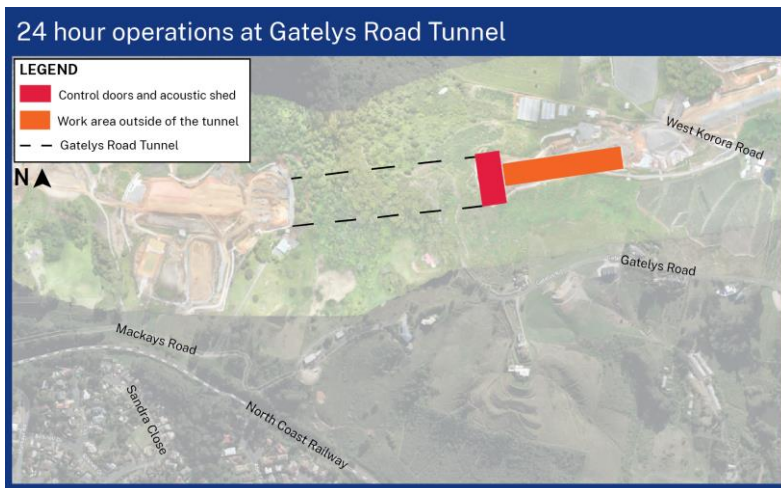
Light spill for nearby residential properties will be minimised using screening.

Read our tunnelling fact sheet at [Coffs Harbour Bypass Fact Sheet Tunneling | Pacific Highway Upgrade \(nsw.gov.au\)](https://www.coffs Harbour Bypass Fact Sheet Tunneling | Pacific Highway Upgrade (nsw.gov.au)).

Comparison in noise levels



Location



Current and upcoming construction

Other construction work in this area includes:

- Out of hours refuelling and plant and machinery maintenance
- Out of hours internal haulage route and environmental controls maintenance
- Out of hours concrete deliveries and pouring
- Bulk earthworks, bridge building, and drainage installation- this may include extended hours on Saturdays.
- Out of hours construction including hammering, drilling, shotcreting, deliveries and excavating at tunnel portals and cuts
- Controlled blasting at cuts
- Building new local roads and access
- Paving which may include some out of hours work.

Contact us



Project information and 24-hour construction response line **1800 550 621**



PO Box 565, Toormina, NSW 2452

View our **community information van** timetable



community@CHBteam.com.au



For the latest traffic updates:

Call 132 701, visit livetraffic.com or download the app Live Traffic NSW



**pacifichighway.nsw.gov.au/
coffsharbourbypass**



Interpreter service

For languages other than English call 131 450