

# Update on out of hours work on the Pacific Highway, Korora and Sapphire Beach

## Coffs Harbour bypass

March 2024



Transport for NSW acknowledges the Gumbaynggirr people as the Traditional Custodians of the lands on which we work and pays respect to Elders past and present.

The Australian and NSW Governments are funding the \$2.2 billion, 14-kilometre Coffs Harbour bypass project. The bypass will boost the regional economy and improve connectivity, road transport efficiency and safety for all motorists.

This notification provides updated information on out of hours construction along the Pacific Highway between James Small Drive (north) and the Old Coast Road bridge over the highway.

This work is being carried out so the Pacific Highway traffic can be temporarily moved east to enable the new western lanes for the bypass to be built.

### What work are we doing?

Work includes:

- Removing the median including the wire ropes concrete and vegetation on the Pacific Highway between Opal Boulevard and Campbell Close
- Rebuilding pavement in the median, relocating concrete barriers and installing line marking and signs for a new lane configuration between Opal Boulevard and Campbell Close
- Relocating concrete barriers on the Pacific Highway between Seaview Close and Campbell Close
- Vegetation maintenance along the Pacific Highway between James Small Drive (north) and south of the Old Coast Road bridge over the highway.

Pavement and utilities investigation work in this area that was previously notified will be completed on Wednesday 6 March 2024.

### When and where we'll be working

We'll be working on the Pacific Highway between James Small Drive (north) and the Old Coast Road bridge over the highway from **Monday 11 March to early April 2024**. If weather interrupts, work will continue into May 2024.

Following consultation, this work will be completed five nights per week allowing us to shorten the duration of the work program and noise impacts for the community. Working hours are between **7pm and 6am, Monday to Friday**.

If this arrangement is no longer suitable for you, please contact the Project Team. This would mean work is completed up to four nights per week with a respite night (i.e. a work night off) however, this would increase the duration of the work program.

### What will this mean for you?

During the work, the Pacific Highway northbound and southbound carriageways will have temporary single lane closures between James Small Drive (north) and the Old Coast Road bridge over the highway.

Equipment to be used for this work will involve light vehicles, lighting towers and traffic control, and will also include:

- Excavators, tipper trucks, semi-trailers, cranes, rollers, concrete saws (until midnight), and chainsaws to remove the median and vegetation plus relocating concrete barriers
- Excavators, tipper trucks, a smooth drum roller, road profiler, asphalt paver, and spray seal truck to rebuild road foundation and pavement



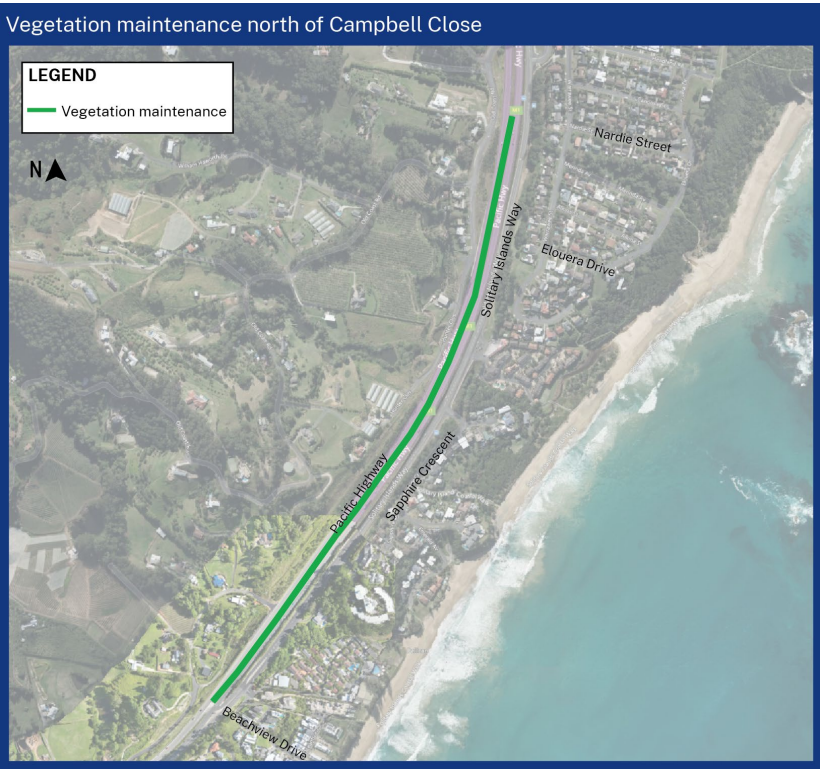
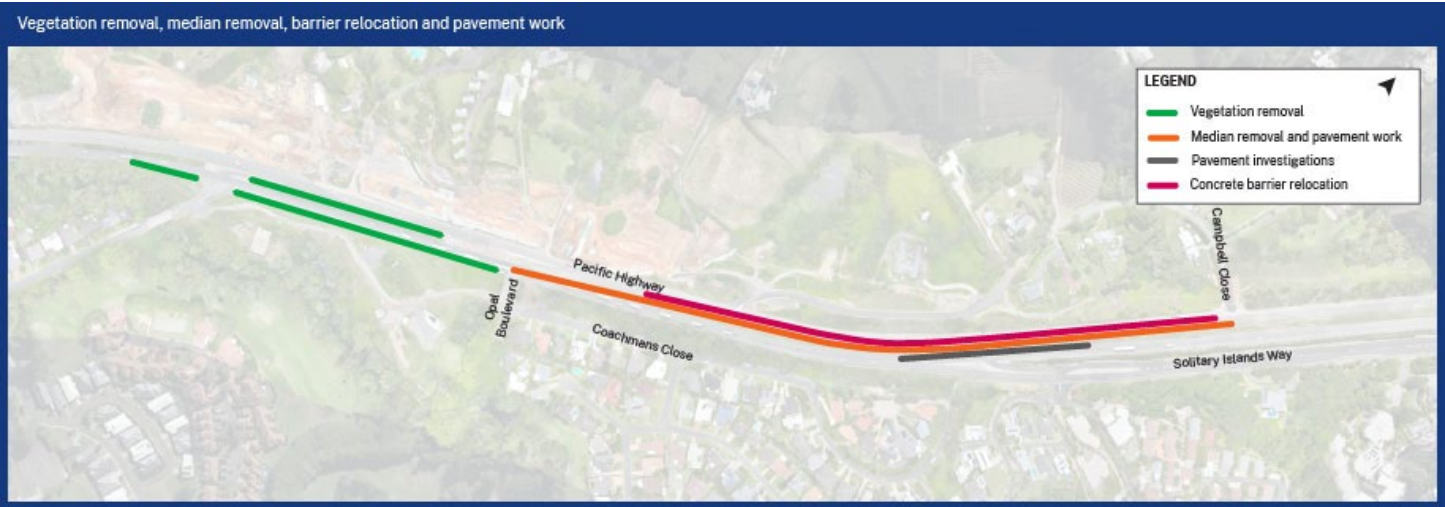
- Waterblast and line marking trucks to remove existing lines and mark the new lane configuration
- Street sweeper for cleaning the road.

Materials for this work will be hauled to locations adjacent to the Pacific Highway and stockpiled within the project boundary.

The predicted noise level for this night work is expected to be quiet to moderate. A comparison of noise levels is included in this notification.

During some of the night work, the right turn from the Pacific Highway into Solitary Islands Way will be temporarily closed.

## Locations



## Current and upcoming work

During this work there will be speed reductions, lane closures and traffic control on the highway to ensure the safety of workers and motorists.

Please keep to the speed limit and follow the direction of traffic controllers and signs.

## Managing our impacts

To minimise noise impacts, we will switch off vehicles and equipment when not in use and undertake work closer to residential properties or noisier work earlier in the night, when possible.

The project’s Environment Protection Licence (EPL) sets strict limits for construction noise and we undertake regular noise monitoring to ensure compliance.

Other construction work in this area includes:

- Out of hours work along the Pacific Highway between Charlesworth Bay Road and Sapphire Beach Interchange including building pavement, removing vegetation and median, relocating barriers, installing signs and line marking and geotechnical investigations
- Out of hours traffic changes on the Pacific Highway and local road turning arrangements between Bruxner Park Road and Sapphire Beach Interchange
- Periodic out of hours street sweeping and vegetation maintenance
- Out of hours refuelling and plant and machinery maintenance
- Out of hours internal haulage route and environmental controls maintenance
- Out of hours concrete deliveries and pouring
- Bulk earthworks, bridge building, and drainage installation.

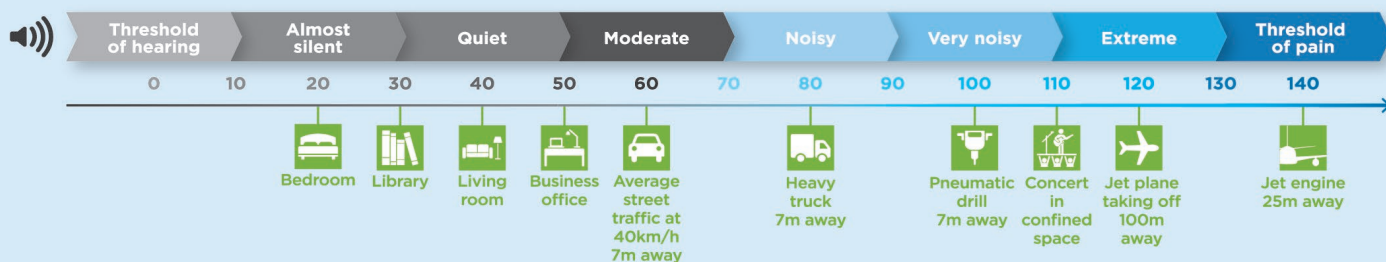
## Upcoming traffic changes

To enable construction of the new western lanes of the bypass, the right turn from the Pacific Highway into Solitary Island Way, Sapphire Beach will permanently close, and motorists travelling north wanting to enter Solitary Islands Way from the Pacific Highway will need to use the Sapphire Beach Interchange. This traffic change will happen after the median removal work outlined in this notification is completed. We have provided a map of this traffic change and detour.

## Comparison in noise levels



## Sound levels in decibels (approximate)





---

## Contact us



Project information and 24-hour construction response line **1800 550 621**



View our **community information** van timetable



**community@CHBteam.com.au**



**For the latest traffic updates:**

Call 132 701, visit [livetraffic.com](http://livetraffic.com) or download the app Live Traffic NSW



**[pacifichighway.nsw.gov.au/coffsharbourbypass](http://pacifichighway.nsw.gov.au/coffsharbourbypass)**



**Interpreter service**

For languages other than English call 131 450



PO Box 565, Toormina, NSW 2452

[www.transport.nsw.gov.au/privacy-statement#Your\\_Privacy](http://www.transport.nsw.gov.au/privacy-statement#Your_Privacy)

