

Transport for NSW

Coffs Harbour bypass

Photo book – October 2024



Australian Government

BUILDING AUSTRALIA



The Australian and NSW Governments are investing in the 14-kilometre Coffs Harbour bypass project. The bypass will boost the regional economy and improve connectivity, road transport efficiency and safety for all motorists.

For detailed project information:



1800 550 62



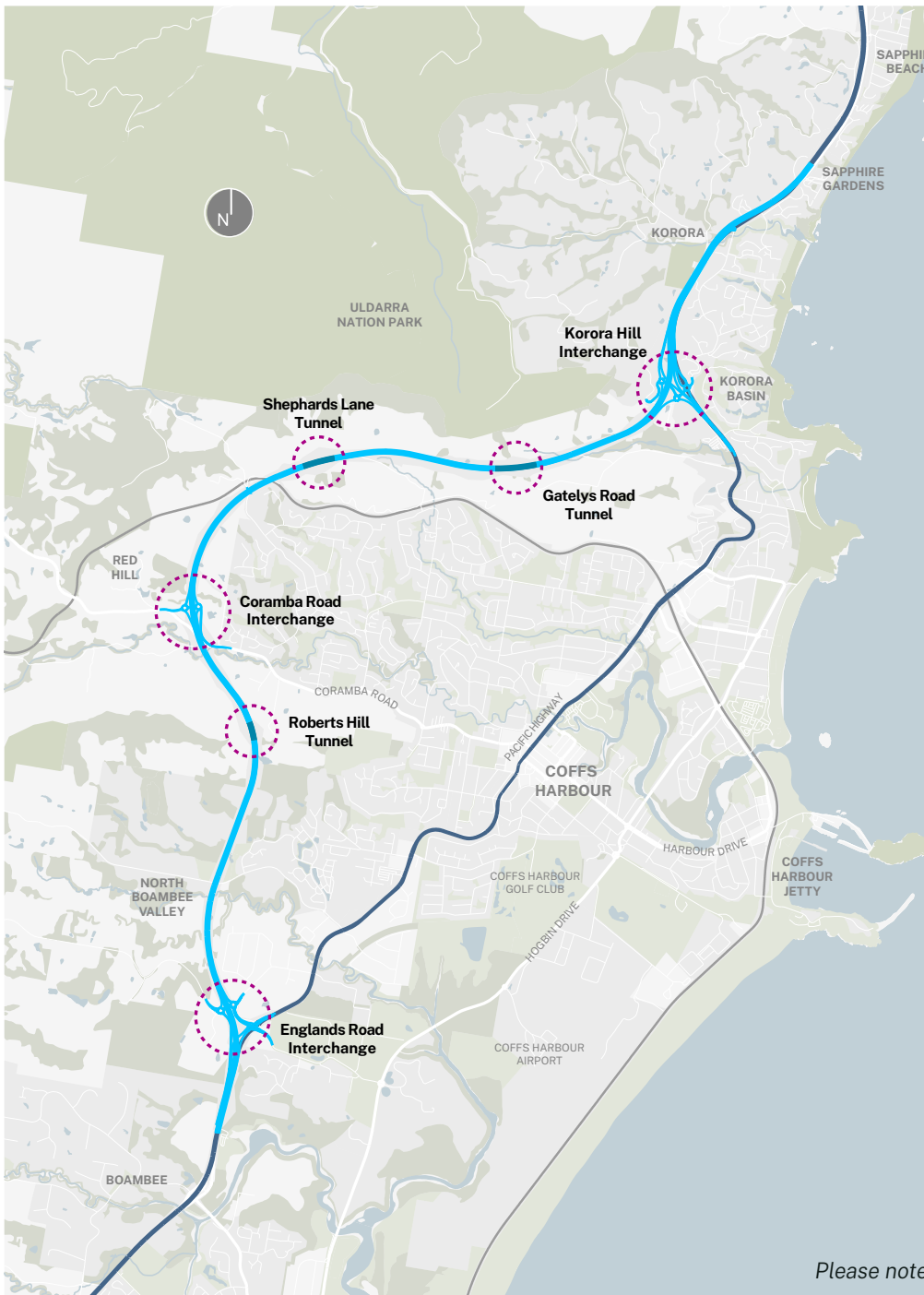
community@chbteam.com.au



pacifichighway.nsw.gov.au/coffsharbourbypass



Live traffic – 132 701 livetraffic.com



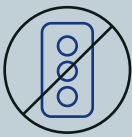
Easing congestion



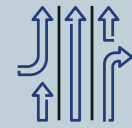
Improving safety



Motorist will save over 12 min in travel time



Bypass up to 12 sets of traffic lights



Improving traffic flow

Please note information provided in this photo book is general in nature.

Bridge over North Boambee Road

Twenty girders lifted

The Coffs Harbour bypass is continuing to set a cracking pace with 15 of the 16 bridges now being built. We recently placed girders on the bridge over North Boambee Road.

Building our two most iconic bridges has started. The western ramp of the new Luke Bowen pedestrian bridge will soon be lifted into place, with the eastern ramp and main span to follow later in October. Once complete, the new bridge will contribute to the Coffs Harbour gateway experience in the north and provide safe access for pedestrians and cyclists across the highway.

Work on the new 250-metre-long bridge over the North Coast Railway line – the project’s longest bridge – has started, with piling rigs boring holes for 52 piles. These piles will support the columns and the two safety deflection walls on either side of the railway line.



1 Construction



We're rocking it

Earthworks

1

Excavators and dump trucks cut and move material at the largest cut site on the project, between Bruxner Park Road and West Korora Road.

2

Crushing and processing materials at the cut site between North Boambee Road and Buchanans Road for use on the project.

3

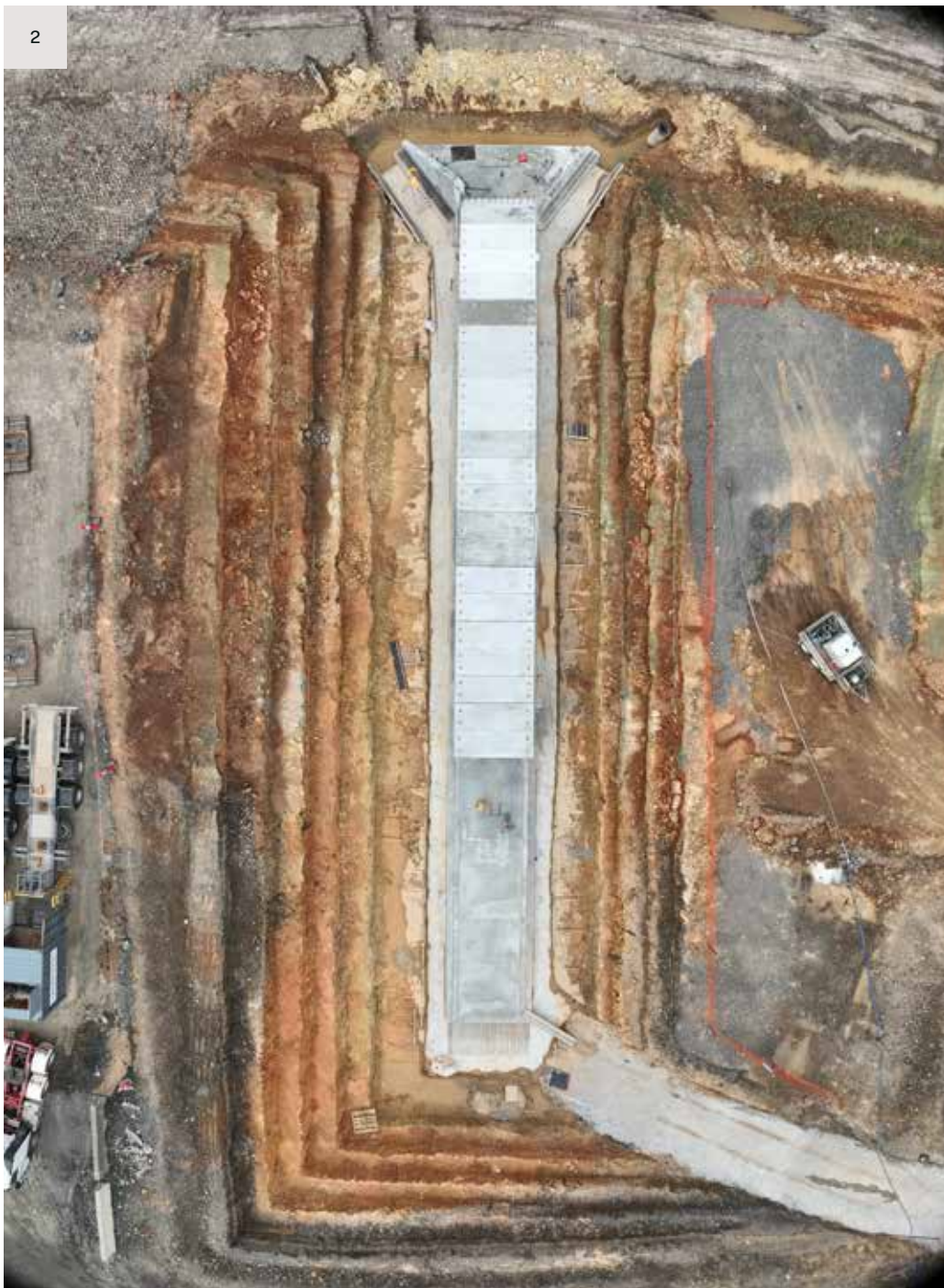
Plant stockpile rock and earth excavated from Gatelys Road Tunnel. So far 50,000 cubic metres of material has been removed from the tunnel.

4

Excavator works on a batter near Roberts Hill Tunnel north portal.



1



2



3

Drainage and culverts

1

Stockpile of drainage pipes near Korora Hill Interchange.

2

Aerial view of one of the project's 16 fauna crossings, a large box culvert located near North Boambee Road, to allow koalas and other native animals to travel beneath the new highway.

3

Ground view of the box culvert near North Boambee Road.

Structures

1

The project team has poured the deck for the bridge forming the Pacific Highway northbound off ramp, Boambee.

2

One of the project's other advanced bridges, the bridge over Newports Creek.

3

The most advanced bridge in the north, Korora Hill Interchange.



Race is on to finish first bridge



Girder up

4

Installing girders for the bridge at Englands Road Interchange.

5

All girders are now in place at the bridge over Pine Brush Creek.

6

Check out the view from under the girders on the new bridge over North Boambee Road.

1

Building the bridge over the North Coast Railway line has started. Once complete, it will be about 250 metres in length and have piles about 48 metres into the ground.

1

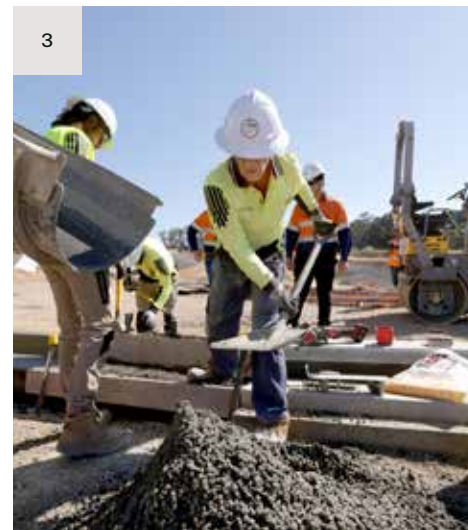


Drilling down

2



3



2

In September, concrete work started on one of the roundabouts at the Korora Hill Interchange.

3

Workers placing the concrete for the kerb and gutter at the Korora Hill Interchange.

4

Concreting of the eastern roundabout will soon start at Englands Road Interchange.



4

Kick it to the kerb

Tunnels

1

Surveyor arriving to start work in Gatelys Road Tunnel north at dawn.

2

Drilling holes in the rock ready for controlled blasting at Gately Road Tunnel north.

3

Mucking out rock and earth after a controlled blast at Gatelys Road Tunnel south.



We're half way through Gatelys tunnel

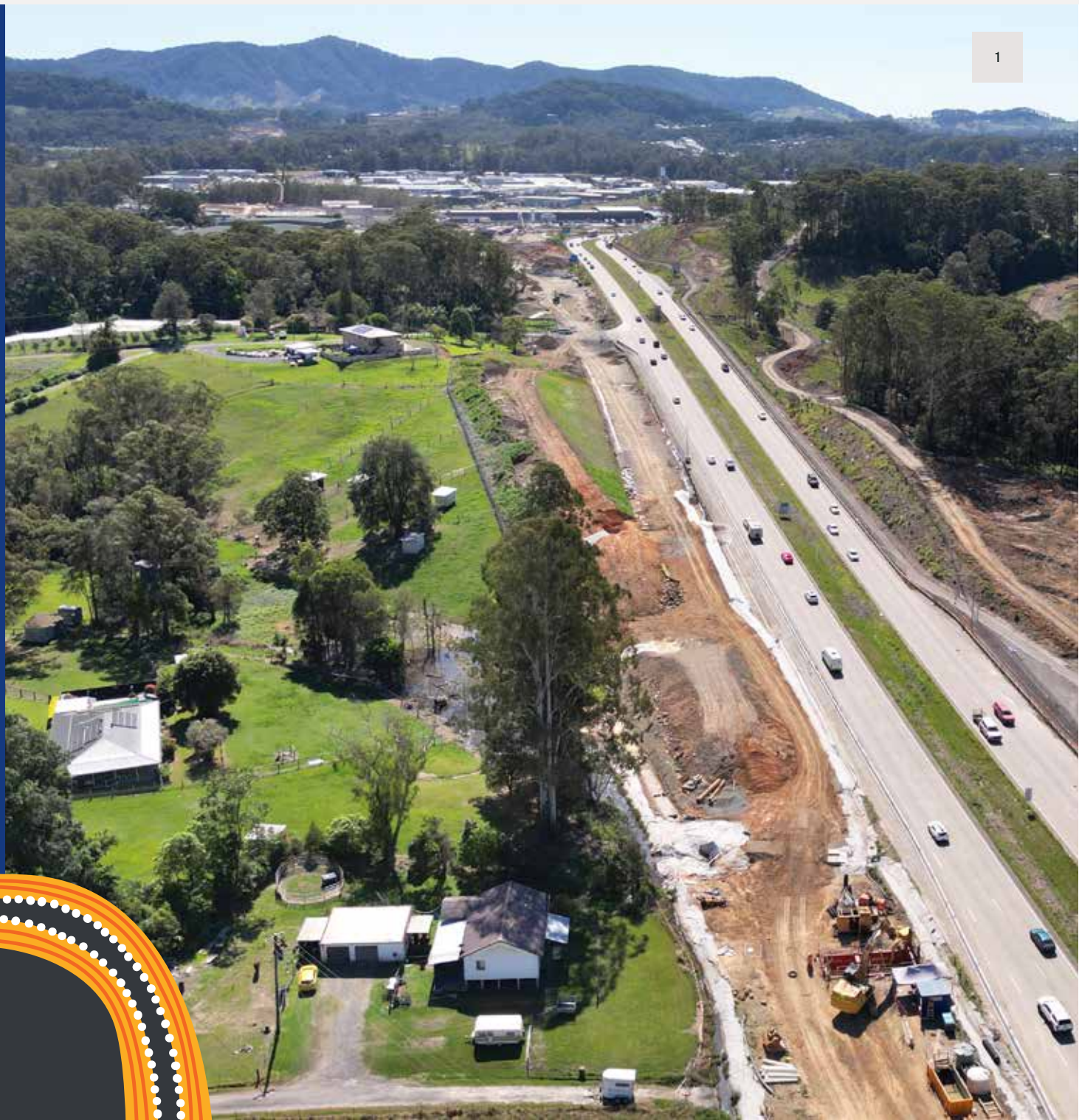


4

Aerial view of Gatelys Road Tunnel south.

2

Precincts



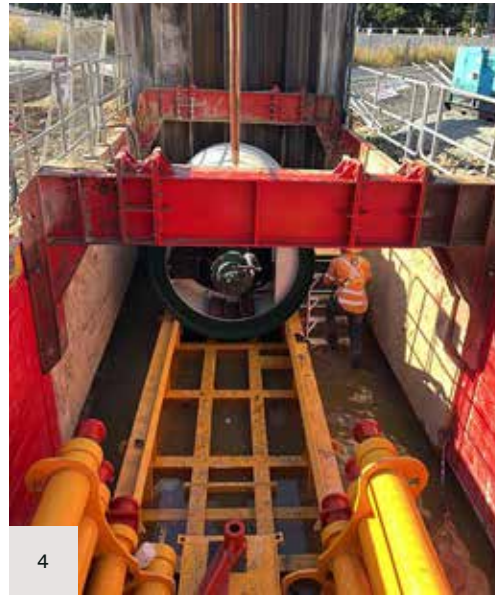
1



2



3



4



5

Sawtell Road Interchange to Englands Road Interchange

1

Aerial view of earthworks and drainage progressing at the southern tie-in.

2

Work advancing on the bridge deck for the Pacific Highway northbound off ramp, Boambee.

3

Walls for the Pacific Highway northbound off ramp, Boambee.

4

A mini tunnel boring machine boring new drainage under the Pacific Highway, Boambee.

5

Aerial view of retaining wall separating the western local access road from the mainline carriageway at the Englands Road Interchange.

Englands Road Interchange to Roberts Hill Tunnel south

1

Great progress has been made on the bridges in this area, with the top picture taken in June, and bottom, in September.

2

Girders in place for bridges over North Boambee Road and Newports Creek tributary.

3

Aerial view of Roberts Hill Tunnel south portal, looking north.

4

Aerial view of the bypass between North Boambee Road and Roberts Hill Tunnel south portal.

5

Plant excavating the cut site between North Boambee Road and Buchanans Road. This is the second largest cut on the bypass.

1



2



3



4



5

Roberts Hill Tunnel
north to Coramba
Road Interchange

1

Aerial view of the Roberts Hill Tunnel north portal.

2

Earthworks near Roberts Hill Tunnel north portal, looking east.

3

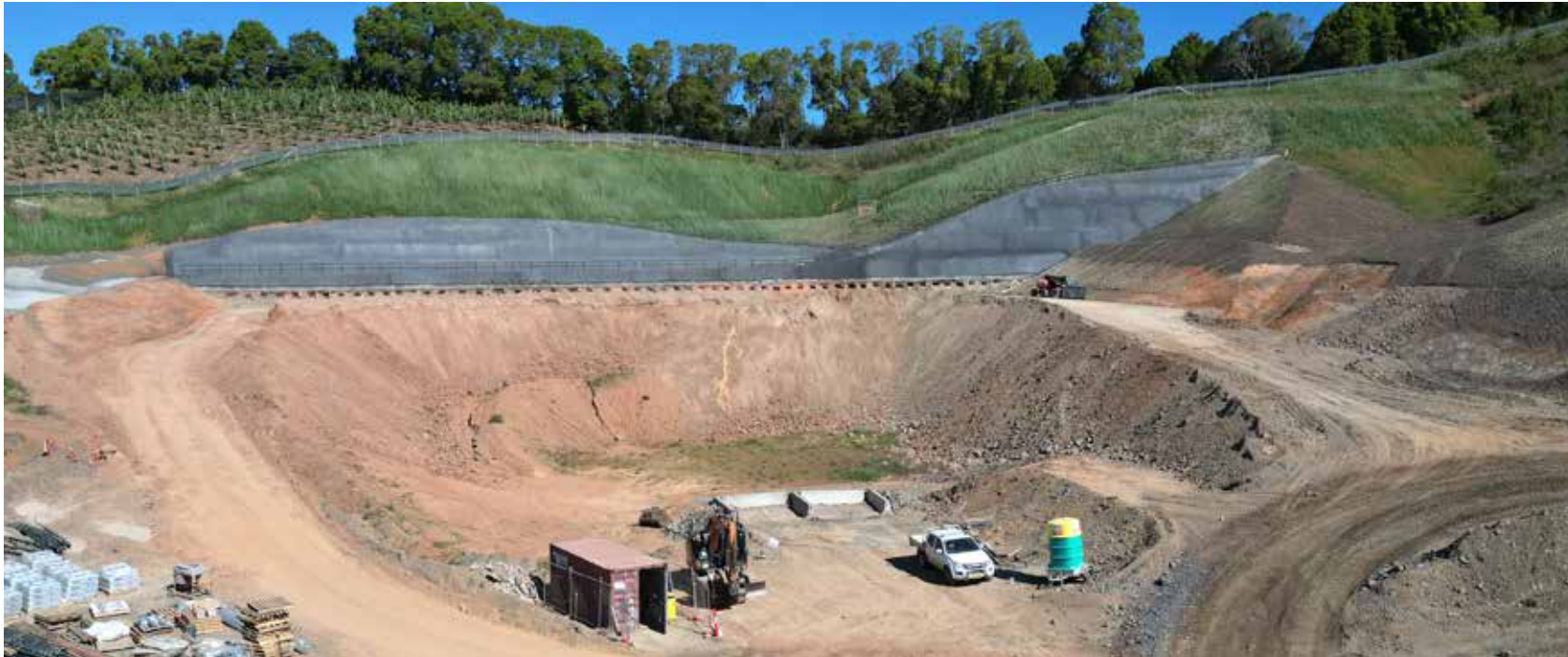
Aerial view of earthworks between Roberts Hill Tunnel north portal and Coramba Road, looking north.

4

Aerial view of the Coramba Road Interchange roundabouts forming, looking south.

5

Workers fence the project boundary near Roselands Drive, Coffs Harbour.



1



2



3



4



5

Coramba Road Interchange to Shephards Lane Tunnel south

- 1
Building the retaining wall for the new Coramba Road Interchange bridge.
- 2
Aerial view of earthworks being completed for a new local road on the western side of the bypass.
- 3
Looking south from the Shephards Lane Tunnel south portal.



4
Aerial view of Shephards Lane Tunnel south portal.

Shephards Lane
Tunnel north to
Gatelys Road
Tunnel south

1

Looking east of work near Mackays Road and Gatelys Road Tunnel south.

2

Aerial view of portal preparation work at Shephards Lane Tunnel north portal.

3

Earthworks near Mackays Road, looking south towards Shephards Lane Tunnel north portal.



2



3

Gatelys Road Tunnel north to Korora Hill Interchange

1

Tunnelling worker walks through Gatelys Road Tunnel.

2

Aerial view of Gatelys Road Tunnel north.

3

Drilling rig enters Gatelys Road Tunnel north.

4

Water cart doing dust suppression near the project's largest cut between Bruxner Park Road and West Korora Road.

5

Geotechnical engineer examines rock being removed from a cut.

6

Aerial view of the project's largest cut site, looking east.



1



2



3



4



5



6

Korora Hill Interchange to Sapphire Beach Interchange

- 1
- Aerial view of earthworks and bridge building at the Korora Hill Interchange, looking south.
- 2
- Looking north at earthworks and bridge building, Pine Brush Creek.
- 3
- First pavement trial for the bypass at the Korora Hill Interchange northbound on ramp.
- 4
- Abutment work for a bridge at the Korora Hill Interchange.



3

It takes people to build a road



“From earthworks to shotcrete quality, the bypass has been great for expanding my construction career.”

Melissa



This section is all about spotlighting some of the people and businesses working together to build the Coffs Harbour bypass.

Thank you to the many people involved in making this project possible.



Transport for NSW

Photography credit: Grant Turner, Simon Hughes, and Matt Weir

Transport for NSW acknowledges the Gumbaynggirr people as the Traditional Custodians of the lands on which we work and pays respect to Elders past and present.

