

# Start of tunnelling work at Shephards Lane Tunnel

## Coffs Harbour bypass

September 2024



Transport for NSW acknowledges the Gumbaynggirr people as the Traditional Custodians of the lands on which we work and pays respect to Elders past and present.

The Australian and NSW Governments are investing in the 14-kilometre Coffs Harbour bypass project. The bypass will boost the regional economy and improve connectivity, road transport efficiency and safety for all motorists.

The Coffs Harbour bypass project team is starting tunnelling work at the Shephards Lane Tunnel from late September 2024. This work will be carried out during approved construction hours. At the southern portal there may be shotcreting carried out from 7am to 8am and 1pm to 6pm on Saturdays.

The work to build Shephards Lane Tunnel is between Shephards Lane and Mackays Road. We have provided a map of the location.

### What work are we doing?

Preparatory work at the northern and southern portals must be completed before controlled blasting and 24/7 operations can begin. This work includes:

- Installing horizontal piles and steel arch frames to support the tube canopy
- Stabilising the top exterior of the tunnel portals with bolts and reinforced shotcrete
- Excavating the entrance to the tunnel portals
- Installing noise attenuation barriers once the team has excavated about 30 metres into the portals
- Establishing a temporary work site
- Building a temporary water treatment plant
- Installing a ventilation system and air quality monitoring

- Installing environmental controls
- Building site access and internal roads.

### When we'll be working

Portal preparation work will be completed from late September to November 2024. This work will generally be carried out during approved construction hours which are **7am to 6pm, Monday to Friday and 7am to 1pm, Saturday.**

After the portal preparation work is completed, the project team will start controlled blasting and 24/7 operations inside the tunnel. The approved hours for controlled blasting for tunnels are **7am to 6pm, Monday to Friday and 9am to 1pm, Saturday.**

This work will include:

- Excavating and removing rock broken up from controlled blasting
- Spraying shotcrete and installing large bolts onto the walls and ceiling to support and stabilise the tunnel
- Drilling holes in the wall and placing explosives in the holes in preparation for the next controlled blast.
- For more information on how we are building the three tunnels on the Coffs Harbour bypass, please read our tunnelling fact sheet online.

### What will this mean for you?

During portal preparation work, there will be traffic control on Mackays Road and Shephards Lane. During this work, materials will be transported to site using approved heavy vehicle routes.



Equipment to be used for this work includes excavators, dozers, rollers, trucks, drill rigs and a shotcrete rig.

## Managing our impacts

The project's Environment Protection Licence (EPL) sets strict limits for dust and construction noise, and we undertake regular monitoring to ensure compliance.

To minimise noise impacts we will switch off vehicles and equipment when not in use and position equipment as far from residential properties as possible. Water carts will be used to manage dust impacts.

Acoustic barriers/control doors will be installed at the tunnel portals once the team has excavated about 30 metres into the tunnel.

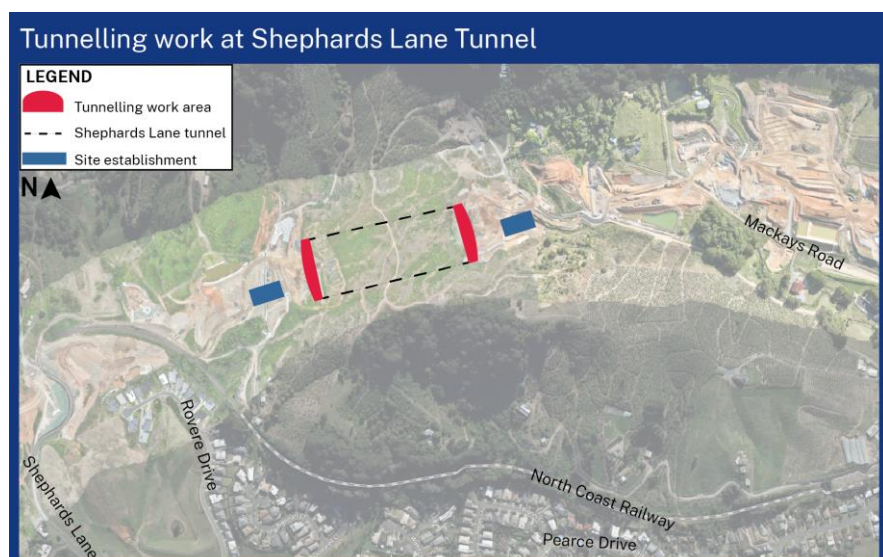
Rock and soil removed from the tunnels will be used within the project boundary to build up and fill in lower lying areas.

## Construction work

Construction activities in this area include:

- Haulage on Mackays Road between Shephards Lane Tunnel northern portal and Gatelys Road Tunnel southern portal
- Out of hours truck deliveries to working areas on Mackays Road and Shephards Lane
- Out of hours refuelling and plant and machinery maintenance
- Out of hours internal haulage route and environmental controls maintenance
- Out of hours concrete deliveries and pouring
- Installing and relocating fencing
- Revegetating areas within the project boundary
- Out of hours water cart operations within the project boundary

## Location



## Contact us



Project information and 24-hour construction response line **1800 550 621**



View our **community information van** timetable



**community@CHBteam.com.au**



**For the latest traffic updates:**  
Call 132 701, visit [livetraffic.com](http://livetraffic.com) or download the app Live Traffic NSW



**[pacifichighway.nsw.gov.au/coffsharbourbypass](http://pacifichighway.nsw.gov.au/coffsharbourbypass)**



**Interpreter service**

For languages other than English call 131 450



PO Box 565, Toormina, NSW 2452

[www.transport.nsw.gov.au/privacy-statement#Your\\_Privacy](http://www.transport.nsw.gov.au/privacy-statement#Your_Privacy)



To subscribe to the email distribution list for this project, please contact [community@CHBteam.com.au](mailto:community@CHBteam.com.au)