

# Roberts Hill Tunnel portal work outside of construction hours

## Coffs Harbour bypass

September 2024



Transport for NSW acknowledges the Gumbaynggirr people as the Traditional Custodians of the lands on which we work and pays respect to Elders past and present.

The Australian and NSW Governments are investing in the 14-kilometre Coffs Harbour bypass project. The bypass will boost the regional economy and improve connectivity, road transport efficiency and safety for all motorists.

### What work are we doing?

As part of major construction, some activities require early concrete pours to meet temperature limits and ensure concrete quality and integrity as it cures.

At the Roberts Hill tunnel north and south portals, between North Boambee Road and Coramba Road, we will be doing shotcreting outside of approved construction hours for portal stabilisation work.

We have provided a map to show the location of this work.

### When we'll be working

Most concrete activities will be carried out during approved construction hours which are **Monday to Friday from 7am to 6pm, and Saturdays from 8am to 1pm.**

Due to higher temperatures during spring, summer and autumn, some work will be undertaken outside of approved construction hours from **Monday 30 September 2024 until early 2025.** This work will be **Monday to Friday from 5:30am to 7am and 6pm to 7pm and Saturday from 7am to 8am and 1pm to 5pm.**

### What will this mean for you?

Equipment used for this work includes a concrete agitator truck, shotcrete pump, an elevated work platform, concrete vibrator, hand tools and light vehicles.

The predicted noise level for this work is quiet to moderate. To help explain this, we have included a diagram of comparative noise levels.

Concrete deliveries will be made via the project's approved haulage routes including the Pacific Highway, North Boambee Road, West High Street and Coramba Road.

### Managing our impacts

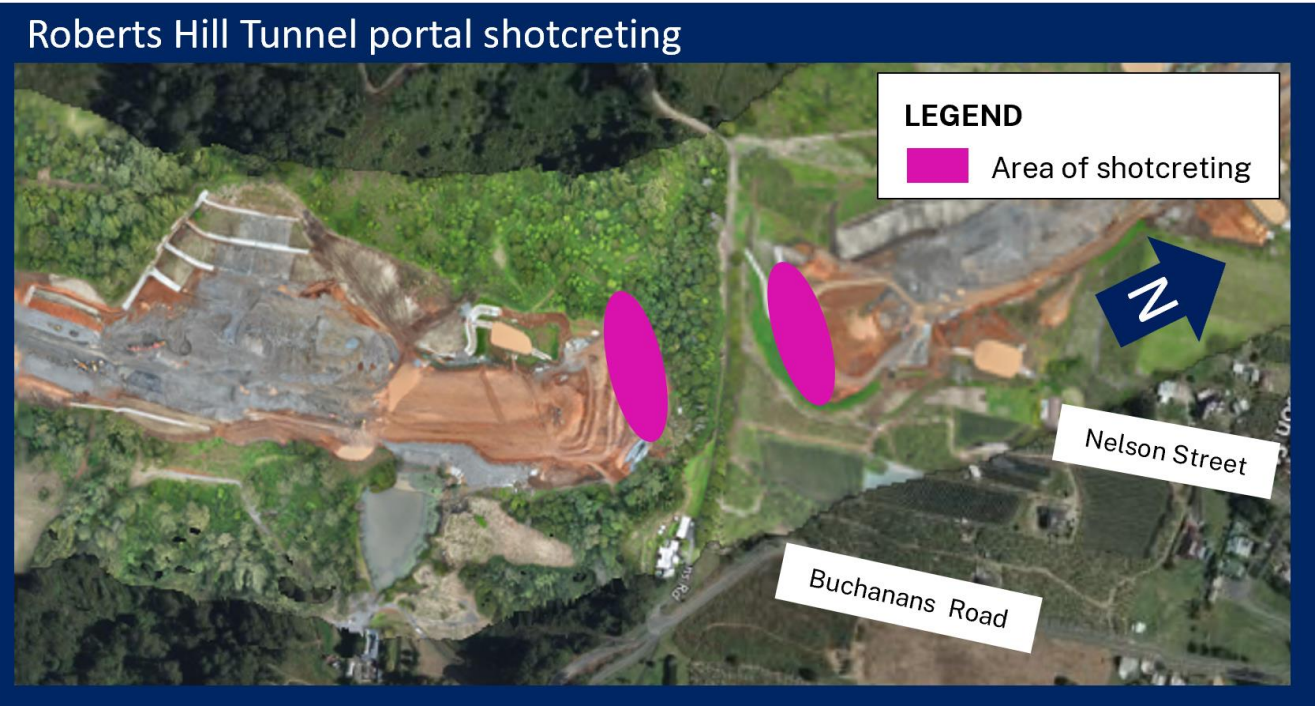
The Minister's Conditions of Approval (MCoA) for the project sets strict requirements for work outside of approved construction hours and noise, vibration, and dust management.

To ensure compliance and mitigate impacts, we:

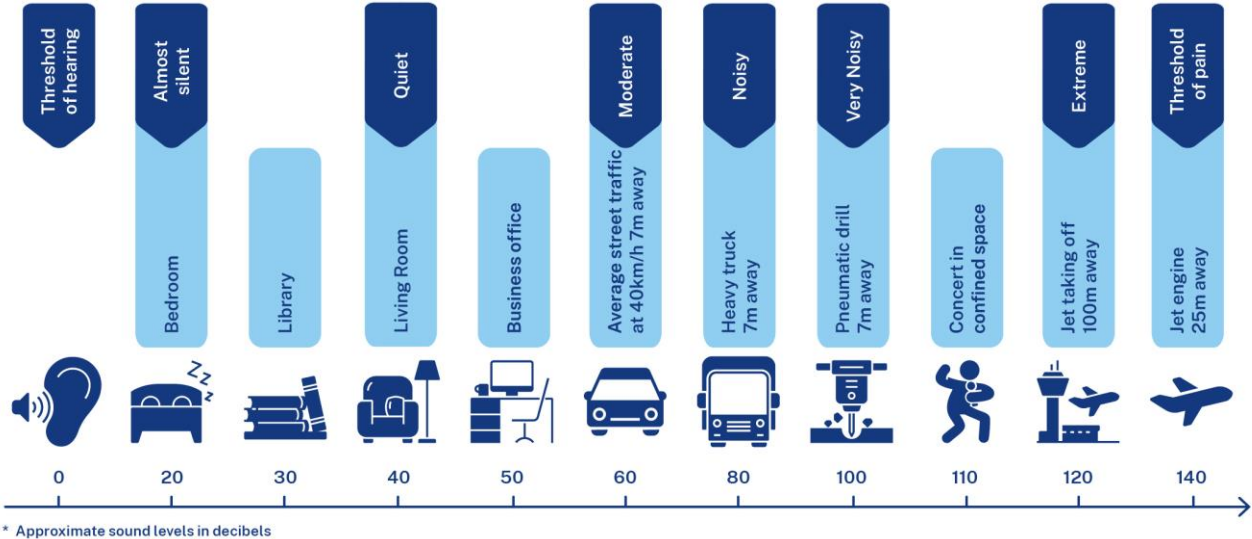
- Monitor noise levels, dust and vibration
- Turn off plant and machinery when not in use
- Use non-tonal reversing beepers and instruct workers to keep noise to a minimum
- Position plant and equipment as far from nearby neighbours as possible.



Location



Comparison in noise levels



Remember to ACT

Remember to

# ACT

When driving through the Coffs Harbour Bypass

**Be Aware**

**Be Cautious**

**Allow more Time**

## Out of hours construction work

Current and upcoming out of hours construction work in this area includes:

- Delivering and pouring concrete and laying asphalt for temperature, quality and safety reasons
- Sawing concrete
- Delivering machinery and materials and bridge elements using the project's approved heavy vehicle routes
- Installing and relocating signage, line marking and barriers
- Maintaining roads and vegetation and street sweeping
- Carrying out survey, geotechnical and pavement investigations
- Maintaining and refuelling plant and machinery and maintaining internal project haulage routes
- Building and maintaining environmental controls
- Maintaining plant and machinery and refuelling.

---

## Contact us



Project information and 24-hour construction response line **1800 550 621**



View our **community information van** timetable



**community@CHBteam.com.au**



**For the latest traffic updates:**  
Call 132 701, visit [livetraffic.com](http://livetraffic.com) or download the app Live Traffic NSW



**[pacifichighway.nsw.gov.au/coffsharbourbypass](http://pacifichighway.nsw.gov.au/coffsharbourbypass)**



**Interpreter service**  
For languages other than English call 131 450



PO Box 565, Toormina, NSW 2452

[www.transport.nsw.gov.au/privacy-statement#Your\\_Privacy](http://www.transport.nsw.gov.au/privacy-statement#Your_Privacy)