

Bored piling between Roberts Hill and north of Coramba Road

Coffs Harbour bypass

October 2023



Australian Government



Transport for NSW acknowledges the Gumbaynggirr people as the Traditional Custodians of the lands on which we work and pays respect to Elders past and present.

The Australian and NSW governments are funding the \$2.2 billion, 14-kilometre Coffs Harbour bypass project. The bypass will boost the regional economy and improve connectivity, road transport efficiency and safety for all motorists.

As part of major construction, the Coffs Harbour bypass project is building two bridges and controlled blasting three cuts between Roberts Hill and north of Coramba Road, Coffs Harbour.

What work are we doing?

Bridge construction starts with bored piling. The two bridges will have eight and 14 piles. A pile generally takes about eight hours to complete. This work will involve:

- Building pads to create stable footings for piling rigs to sit on
- Transporting piling rigs to site via the project's approved heavy vehicle routes
- Drilling through soil and rock in the ground with piling rigs to form the pile holes
- Installing steel reinforcement cages into the holes
- Delivering concrete from the project's batch plant on Englands Road, North Boambee
- Pouring concrete into the pile holes to build the piles
- Using pneumatic drills (jackhammers) to remove concrete overpour
- Stockpiling soil and rock and transporting it for use on other areas of the bypass.

The next steps for construction of these bridges includes building columns and the substructure before adding the bridge deck.

Controlled blasting is used to break hard rock that can't be excavated by mechanical means. We use this rock to build up or "fill" parts of the road alignment that run through lower areas and to process into pavement materials. This work will involve:

- Drilling blast holes over multiple days
- Placing explosives in the holes according to a set pattern and depth
- Traffic control and short stoppages on local roads, if required
- Detonating the blast
- Monitoring vibration and air blast overpressure (noise from energy release)
- Crushing the rock and loading it into trucks
- Transporting the rock for use on the road alignment.

Approved construction hours are **7am to 6pm, Monday to Friday and 8am to 1pm, Saturday.**

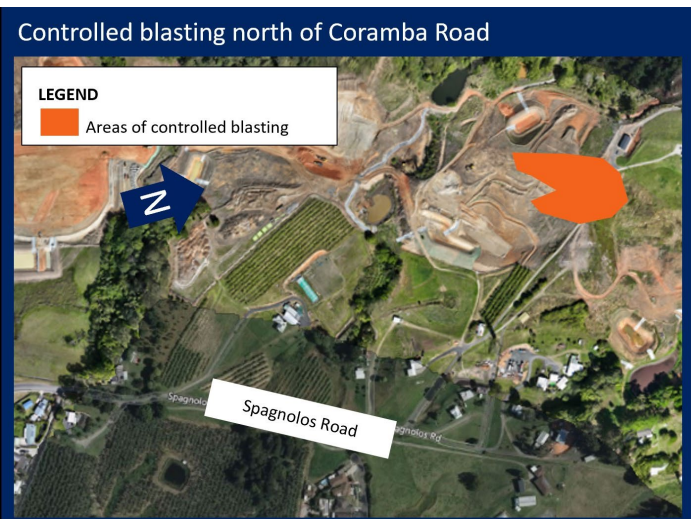
Controlled blasting for cuts will be carried out specifically between 9am and 5pm, Monday to Friday and 9am to 1pm on Saturdays.

The safety of workers and the community is our highest priority when undertaking controlled blasting activities. All blasts are managed by a licensed contractor and experienced shotfirer in line with relevant legislation. An exclusion zone will be established before each controlled blast and all site access points will be manned by designated blast guards to stop access.

When and where we'll be working

We'll be working on the piling for the bridges and controlled blasting between Roberts Hill and North Coramba Road from **November 2023 to May 2024**, weather permitting.





What will this mean for you?

The equipment and machinery we will use for this work include a piling rig, a crane, pneumatic drill (jackhammer), concrete trucks and heavy vehicles to transport soil and rock.

Moderate, consistent noise will be heard from the piling rig when it is drilling. Louder clangs will occur towards the end of the digging to remove material from the rig's

Comparison of noise levels



drill piece. To remove excess concrete, we will use a pneumatic drill (jackhammer) which is noisy.

Concrete deliveries will be made via Coramba Road. Temporary traffic control will be in place to assist with these movements. Motorists can expect reduced speed limits and delays of up to five minutes.

The Minister's Conditions of Approval (MCoA) for the project sets strict limits on vibration and air blast overpressure and all blasts are modelled and monitored to ensure compliance. Any increase to these limits will be discussed and agreed with all residents before work starting. Data from the monitoring will be publicly available online each month.

We intentionally stage our blasts to minimise impacts for community. There will be up to two blasts per week with up to 20 blasts in each location. Traffic control will be in place on roads located within the exclusion zone for each blast site. For your safety, please follow signage and the direction of traffic control.

Managing our impacts

We are using bored piles instead of driven piles which means we will drill holes for the piles rather than hammering them into the ground. This approach helps us break through hard rock in the Coffs Harbour area and is not as disruptive for nearby residents and businesses because it creates less noise and vibration.

Noise from a controlled blast is over quite quickly and can be compared to a loud clap of thunder. The project team will liaise with affected residents and property owners in advance of blasting, including weekly updates via email and SMS, if requested.

Drilling and crushing activities are constant and can be considered very noisy, as illustrated in our graphic.

The project's Environment Protection Licence (EPL) sets strict limits for construction noise, and we undertake regular noise monitoring to ensure compliance.

We will position plant and equipment as far from nearby neighbours as possible during piling, drilling and crushing work and will schedule respite periods, as required.

Looking ahead

Upcoming construction work in this area includes:

- Out of hours delivery of concrete from the batch plant at Englands Road, North Boambee to sites between Roberts Hill and north of Coramba Road to meet construction requirements
- Out of hours refuelling and plant and machinery maintenance along the alignment
- Out of hours continuous concrete pours for structures to meet construction requirements
- Earthwork along the alignment – this may include extended hours on Saturdays
 - Controlled blasting at various locations along the alignment.

We apologise for any inconvenience and thank you for your patience as we build this important project.

More information

For more information, read our factsheets at pacifichighway.nsw.gov.au/coffsharbour on:

- Bored piling
- Temporary concrete batch plant
- Controlled blasting
- Traffic safety
- Dust and air quality management
- Asbestos management
- Good neighbour
- Safety in construction
- Vegetation removal and habitat restoration
- New plant species
- White Booyong Fig Subtropical Rainforest.

Contact us



Project enquiries and complaints 24-hour telephone number **1800 550 621**



community@CHBteam.com.au



pacifichighway.nsw.gov.au/coffsharbourbypass



PO Box 565, Toormina, NSW, 2452



View our **community information van** timetable



For the latest traffic updates:

Call 132 701, visit livetraffic.com or download the app Live Traffic NSW



Interpreter service

For languages other than English call 131 450
Arabic • Greek • Hindi • Mandarin • Vietnamese

لطلب خدمة الترجمة الشفهية للغات غير الإنجليزية اتصل
بالرقم **131 450**

Για υπηρεσίες διερμηνείας σε άλλες γλώσσες εκτός από
τα Αγγλικά καλέστε το **131 450**

अंग्रेज़ी के अतिरिक्त अन्य भाषाओं के लिए दुभाषिया सेवा
131 450 पर कॉल करें

获取英语以外的其他语言口译协助服务可以致电**131 450**

Để có dịch vụ thông ngôn cho các ngôn ngữ khác tiếng
Anh, gọi số **131 450**

www.transport.nsw.gov.au/privacystatement#YourPrivacy

