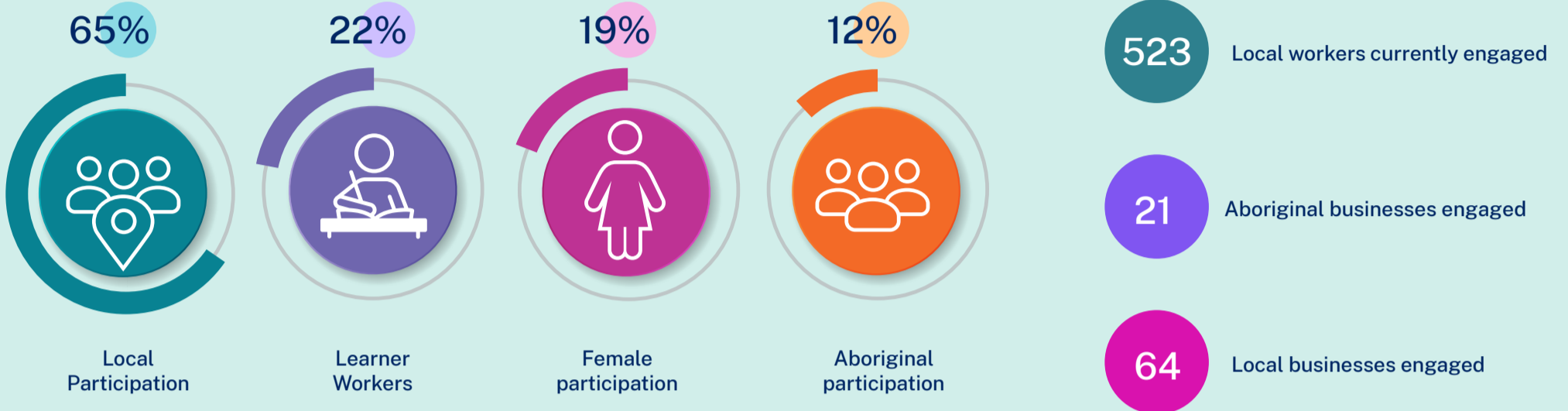


OCTOBER / 2023
REPORT CARD

DIGGING DEEP AND HAVING A (CONTROLLED) BLAST

The project team have completed about 90 percent of the vegetation removal program. Bulk earthworks and drainage installation is in full swing and controlled blasting has commenced at four cut locations. The team celebrated the start of structures in September, with the first bridge piles completed at the Korora Hill and Englands Road interchanges.

OUR PEOPLE



Data includes Transport for NSW, FGJV, design team, subcontractors and supply chain. Local participation is identified as being in the Coffs Harbour, Clarence Valley, Bellingen and Nambucca Valley LGAs

COMMUNITY & STAKEHOLDER ENGAGEMENT

Stingless Native Bee Hive Rescue

The project team has worked with Clarence Native Bees to rescue and relocate twelve logs containing stingless native bees. Recent log hives have been donated to Barcoo Community Gardens at Toormina and Bishop Druitt College.



Korora Hill interchange looking north east

PROGRAM & MILESTONES

Completed

- ✓ Stage 1 vegetation removal completed
- ✓ Earthworks commenced across the alignment
- ✓ Controlled blasting commenced at four locations
- ✓ Concrete batch plant operational on Englands Road
- ✓ Piling and columns commenced

Looking forward

- Complete demolition
- Complete traffic switch on the Pacific Highway at Korora to enable construction of the new Luke Bowen Footbridge
- Complete Bennetts Road realignment
- Start tunnel work at Gatelys Road tunnel
- Continue controlled blasting and bridge construction at new locations

23% complete



Percentage complete refers to contract completion and includes design and construction.



Coramba Road looking north east

SAFETY

- 1,234 people inducted
- About 844,000 person hours
- About 600 pieces of plant mobilised

*Data is cumulative and calculated from the start of major construction.

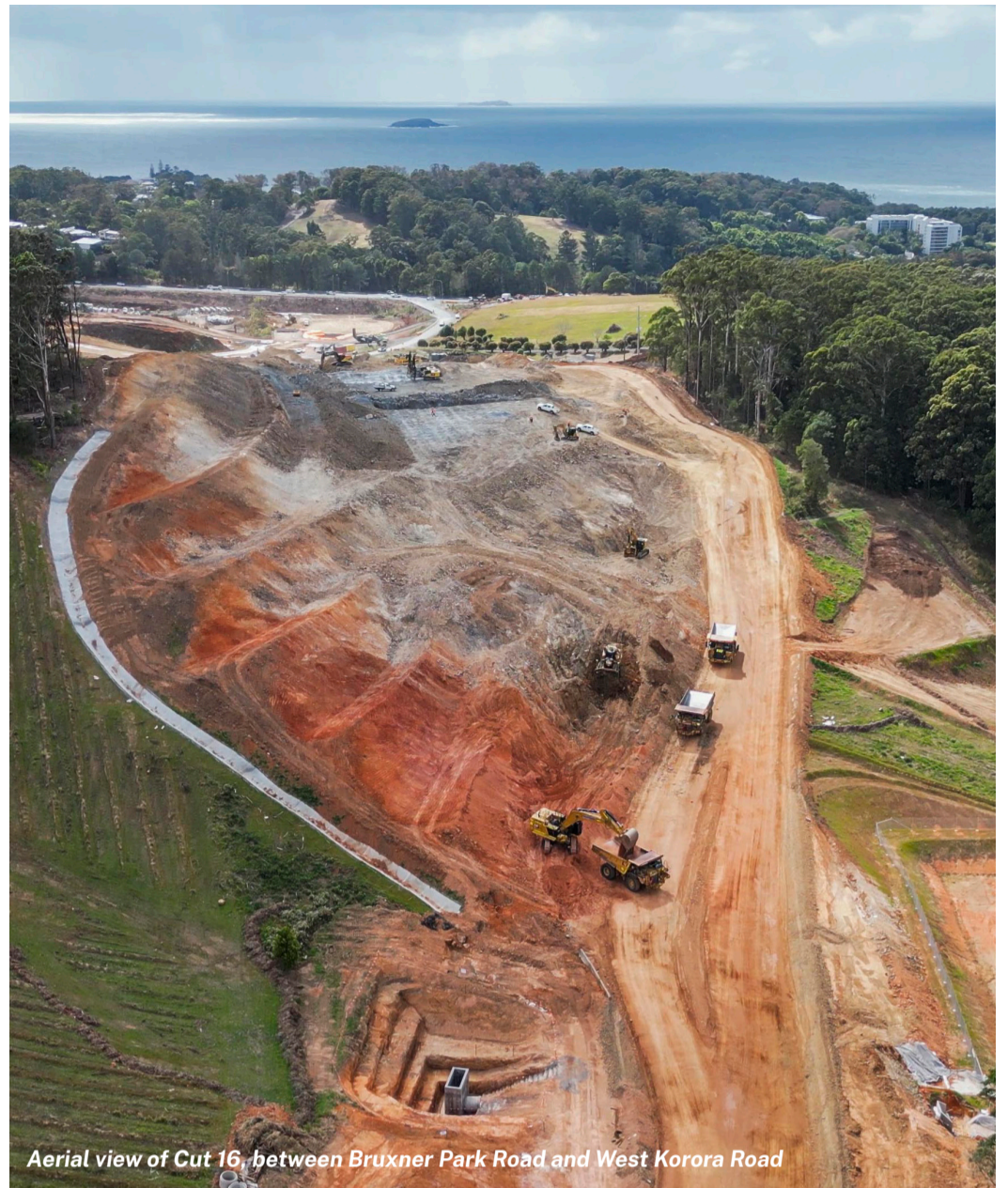


REPORT CARD

DESIGN

71%

of detailed design submissions completed



Aerial view of Cut 16, between Bruxner Park Road and West Korora Road

ENVIRONMENT & SUSTAINABILITY

Let's talk about root balls

The vegetation removal program is now about 90 percent complete. Through detailed design refinements, we have reduced native vegetation clearing by 20 percent from the approved 48.17 hectares to about 38 hectares. As part of this program, the team has provided more than 200 root balls and timber logs to Local Land Services for use in local river restoration projects. Root balls and logs help to stabilise river banks and create new habitats for aquatic animals.



Aerial view from above Shepherds Lane tunnel

EARTHWORKS

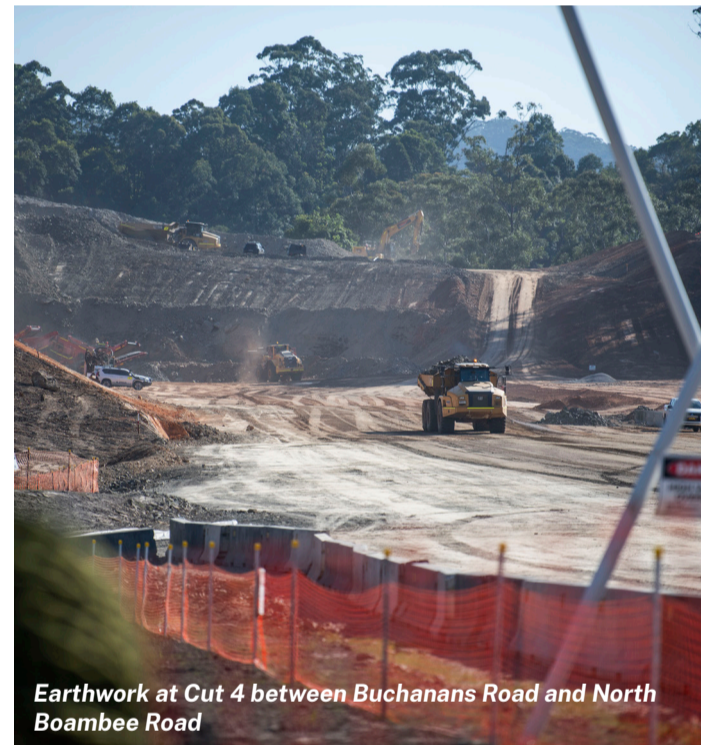
822,000 CUBIC METRES

of earthwork completed since major construction started



25%

of 3.3 million total moved to date



Earthwork at Cut 4 between Buchanans Road and North Boambee Road

CONTROLLED BLASTING

20

controlled blasts completed at three cut locations

CONCRETE

11,000

cubic metres of concrete used on the project

6.5%

of 170,000 cubic metres to batch in total

STRUCTURES

6/34 CULVERTS IN PLACE

57/272 BRIDGE PILES IN PLACE

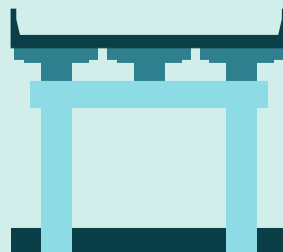
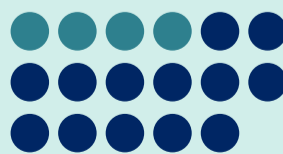
0/250 SUPER T GIRDERS LANDED

0/46 ABUTMENTS COMPLETED

0/18 HEADSTOCKS LANDED

0/38 DECK SECTIONS COMPLETED

4 / 17 BRIDGES UNDER CONSTRUCTION



First bridge piles at Englands Road Interchange