



Barrier installation and vegetation removal along the Pacific Highway, Korora

The Australian and NSW governments are funding the \$2.2 billion, 14-kilometre Coffs Harbour bypass project. The bypass will boost the regional economy and improve connectivity, road transport efficiency and safety for local and interstate motorists.

As part of construction work, the Coffs Harbour bypass team is installing concrete barriers and removing vegetation along the northbound lane of the Pacific Highway between Bruxner Park Road and Old Coast Road, Korora. To minimise impacts to traffic on the highway, barrier installation and some vegetation removal work will occur over **three nights** between **7pm to 6am** on **Monday 5 June, Tuesday 6 June, and Thursday 8 June**. If rain interrupts, it will be completed on **Wednesday 14 June and Thursday 15 June**. Maps showing the locations of these activities are included in this notification.

Barrier installation

The project team is installing concrete barriers along the northbound lane of the Pacific Highway from about 400m north of Bruxner Park Road to Old Coast Road, Korora.

Vegetation removal

The team is removing vegetation within the project boundary in the area west of the Pacific Highway and north of Bruxner Park Road during standard construction hours. For the safety of motorists, vegetation close to the highway northbound carriageway will be removed at night.

The project follows strict protocols for tree removal including a two stage process to reduce impacts on native animals and the relocation of threatened plants. This process includes clearly marking out environmental protection exclusion zones that will not be impacted and to mark areas where vegetation will be removed.

Additionally, the project's qualified and experienced ecologist carries out a survey before any vegetation removal starts. This assessment identifies and tags all potential habitat trees such as ones that typically have hollows or signs of animals living in them. Other vegetation removal work starts while the habitat trees are not disturbed for at least 48 hours. This time allows animals to relocate nearby, including to the 165 nest boxes installed as part of the Coff Harbour bypass.

When habitat trees are felled, it is done using a specific method to minimise any disturbance to native animals. All felled habitat trees are inspected by the project ecologist. They also carry out a health assessment on any native animals found. If they are healthy, they are released into habitats nearby while any injured fauna are taken into care by local wildlife carer groups.

This staged method has been successfully used on previous Transport for NSW projects.

Restoring landscape and habitat

At this stage, extensive landscaping and revegetation work covering about 150 hectares will be carried out as part of the project. Revegetation includes the koala habitat over Roberts Hill and Gatelys Road tunnels and under the bypass at Jordans Creek. This work will connect bushland from the escarpment to the low lying

areas of Coffs Harbour, creating a significant fauna corridor. Other proposed revegetation will include areas of rainforest and native species. Details will be included in the Place Design and Landscape Plan which the project team will be placing on public display later this year for feedback.

The project will protect roughly 300 hectares of natural habitat through biodiversity offsets at the Coffs Basin, Jordans Creek area next to the alignment, and Upper Kalang, just west of Urunga. We have also contributed more than \$270,000 to NSW Biodiversity Conservation division for research into the management of Myrtle Rust and its impacts on the Scrub Turpentine species.

Reusing timber

As part of the vegetation removal process, all trees are assessed to determine if they can be reused for merchantable timber, or the project’s fauna furniture within and next to fauna crossings, as rootballs to create aquatic habitats in creeks and to help stabilise creek banks or as mulch for project erosion and sediment controls.

More information about this work can be found in the project’s Vegetation Removal and Landscape and Habitat factsheet at www.pacifichighway.nsw.gov.au/coffsharbourbypass.

How will these works affect you?

Installing barriers requires semi-trailers with a crane, light towers, a small excavator and light vehicles, which will generate some noise. The barriers will be installed progressively, meaning the noise and work impacts will be short in duration in any one area.

Equipment used for the night vegetation removal includes excavators, chainsaws, light vehicles, and light towers which will generate some noise.

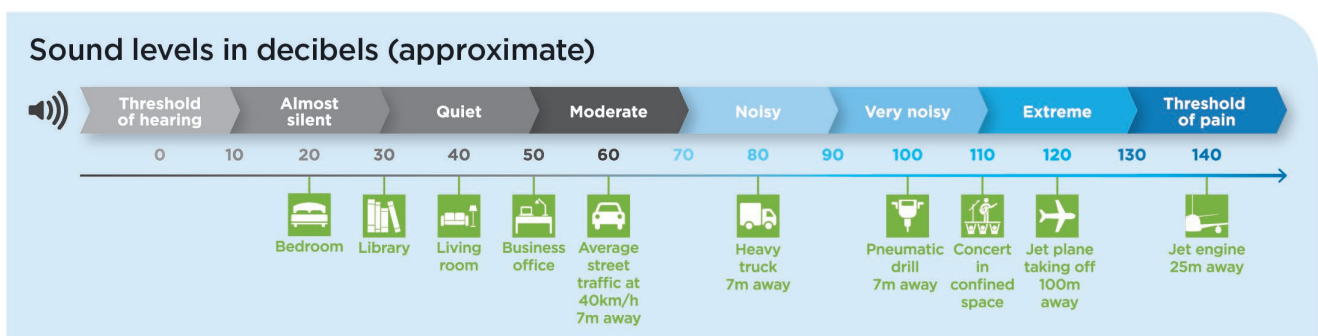
Mulchers will only be used during standard hours to minimise noise levels at night for nearby residents.

We will minimise our impact during this work by carrying out work closer to residential properties earlier in the night shifts and switching off vehicles and equipment when not in use.

All efforts will be made to minimise disruption to the surrounding community and environment while this work is occurring.

The predicted noise level for night work is expected to be moderate. The figure overleaf explains this noise level.

Comparison of noise levels

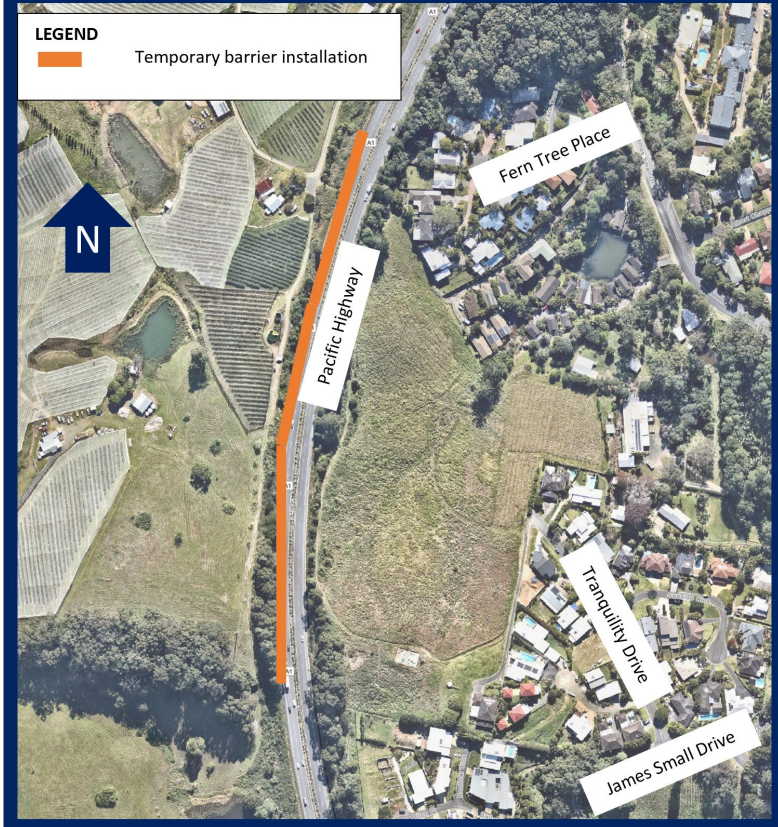


There will also be stoppages for short periods on the highway during the night work.

There will be speed reductions, lane closures and traffic control on the highway to ensure the safety of workers and motorists. Please keep to speed limits and follow the direction of traffic controllers and signs. For the latest traffic updates, you can call 132 701, visit livetraffic.com or download the Live Traffic NSW App.

Locations of work

Barrier installation on Pacific Highway



Areas of vegetation removal



Looking ahead

- Vegetation and banana tree removal has started along the alignment and is being carried out in multiple locations at once
- Vegetation removal along the western side of the Pacific Highway and Korora School Road near Kororo Public School, this may include extended hours on Saturdays in July
- Under-boring and installing pipes from the eastern side of the Pacific Highway at James Small to the western side of the Pacific Highway, south of Bruxner Park Road is continuing for about three months
- A generator will be in use at the intersection of the Pacific Highway and Bruxner Park Road from May 2023 for about three months
- Periodical semi trailer deliveries to working sites areas at Charlesworth Bay Road, Bruxner Park Road and James Small Drive in May
- Refuelling and plant and machinery maintenance along the alignment is ongoing
- Earthworks along the alignment, which may include extended hours on Saturdays is ongoing
- As part of earthwork activities, the project team will begin controlled blasting at various locations along the bypass alignment in coming months.

Standard construction hours

The standard construction hours for the project are:

- **Monday to Friday from 7am to 6pm**
- **Saturday from 8am to 1pm on Saturday.**

We apologise for any inconvenience and thank you for your patience as we build this important project which will boost the efficiency and safety for local and interstate motorists.

Contact

If you have any enquiries and complaints, please contact the project team on 1800 550 621 or community@chbteam.com.au

Translating and interpreting service



If you need help understanding this information, please contact the Translating and Interpreting Service on 131 450 and ask them to call us on 1800 550 621