



Australian Government

BUILDING OUR FUTURE



July 2022

Coffs Harbour bypass project

Notification letter of upcoming out of hours work on the corner of James Small Drive and the Pacific Highway.

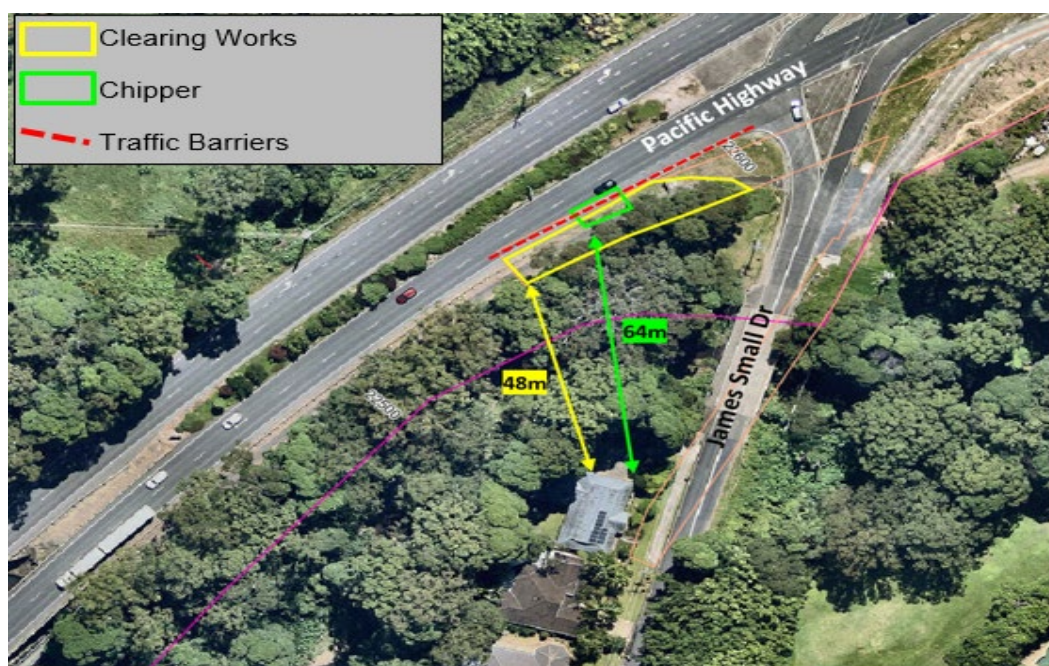
As part of the project's early works, vegetation clearing and material processing through a chipper truck will occur on the corner of the Pacific Highway and the northern end of James Small Drive. This vegetation clearing is to remove overhanging trees to clear traffic lanes for future work. Work will occur between **8am and 6pm Sunday 31 July**, weather permitting.

This work is being undertaken on the weekend due to the requirement for periodic closures of the southbound lanes, which can only be undertaken on Saturdays and Sundays when there is less traffic.

How could this work impact you?

All efforts will be made to minimise dust, noise and added disruption to the surrounding community and environment while work is being carried out.

The proposed activities may be audible to residences nearby, however, work involving machinery such as chainsaws and mulching equipment will occur in stages to minimise noise levels and verification noise monitoring will occur during the work to ensure the activities are in accordance with the Coffs Harbour bypass project's approvals and guidelines.



Traffic control measures will be in place, including the closure of one southbound lane and shoulder. Traffic may be stopped across both lanes for short periods while trees are felled. Traffic volumes will be monitored during this period, and work methodology may be adjusted when required.

Pedestrians and cyclists may also experience a change in footpath conditions, and traffic control will be in place to escort footpath users to ensure their safety.

Look ahead

Over the next three months, additional out of hours work is anticipated for the following:

- Clearing of vegetation at Banana Coast Caravan Park between 30th July and the 21st August 2022.
- Start work to install watermain at Banana Coast Caravan Park and at the northern end of James Small Drive during August/September 2022.
- Clearing of vegetation along the Pacific Highway at Korora during August/September 2022.

Unexpected circumstances may initiate the need for additional out of hours work to occur outside of these timeframes. In all circumstances, residents will be provided with written notification prior to the work commencing.

Contact

If you have any questions or would like more information please contact our project team:

1800 550 621

coffsharbourbypass@transport.nsw.gov.au

pacifichighway.nsw.gov.au/coffsharbour



Translating and interpreting service

If you need help understanding this information, please contact the Translating and Interpreting Service on **13 14 50** and ask them to call us on **1800 550 621**.

