



September 2022

# Out of Hours Work on the Coffs Harbour bypass project – northern utilities

## Notification of upcoming out of hours work on the corner of the Pacific Highway and James Small Drive to the western side of the Pacific Highway

Quickway has been engaged to continue early work on the Coffs Harbour bypass project. As part of the project's utility relocation work, horizontal directional drilling (underboring) will occur from the corner of the Pacific Highway and the northern end of James Small Drive to the western side of the Pacific Highway. Work will occur between **6am and 6pm** on **Sunday 11 September** and, if required, between **6am and 6pm** on **Sunday 18 September 2022**, weather permitting.

This work is being undertaken on Sunday due to the requirement for periodic closures of the Pacific Highway, which can only happen on a weekend when there is less traffic.

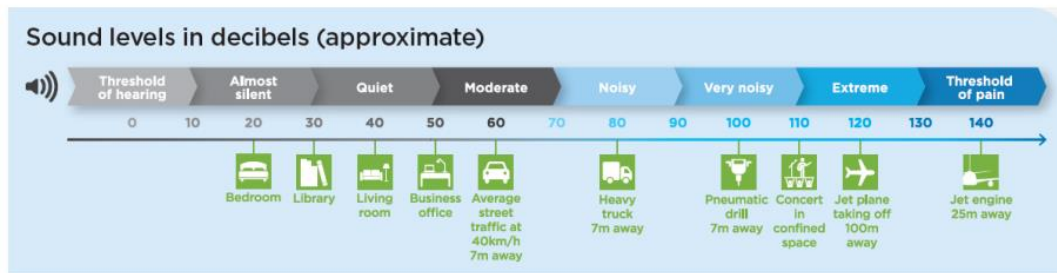
The underboring will involve machinery, including a drilling rig, excavator and vacuum excavation truck and the machinery will be located on the eastern and western sides of the highway.

### How could this work impact you?

All efforts will be made to minimise dust, noise and added disruption to the surrounding community and environment while this work is being carried out. We are committed to mitigating construction impacts on the surrounding residents by:

- consulting with directly impacted residents ahead of the work taking place
- work involving machinery will occur in stages to minimise noise levels
- turning off vehicles when not in use
- using non-tonal reversing beepers and instructing workers to keep noise to a minimum.
- orientating machinery with noisiest elements directed away from receivers wherever possible.

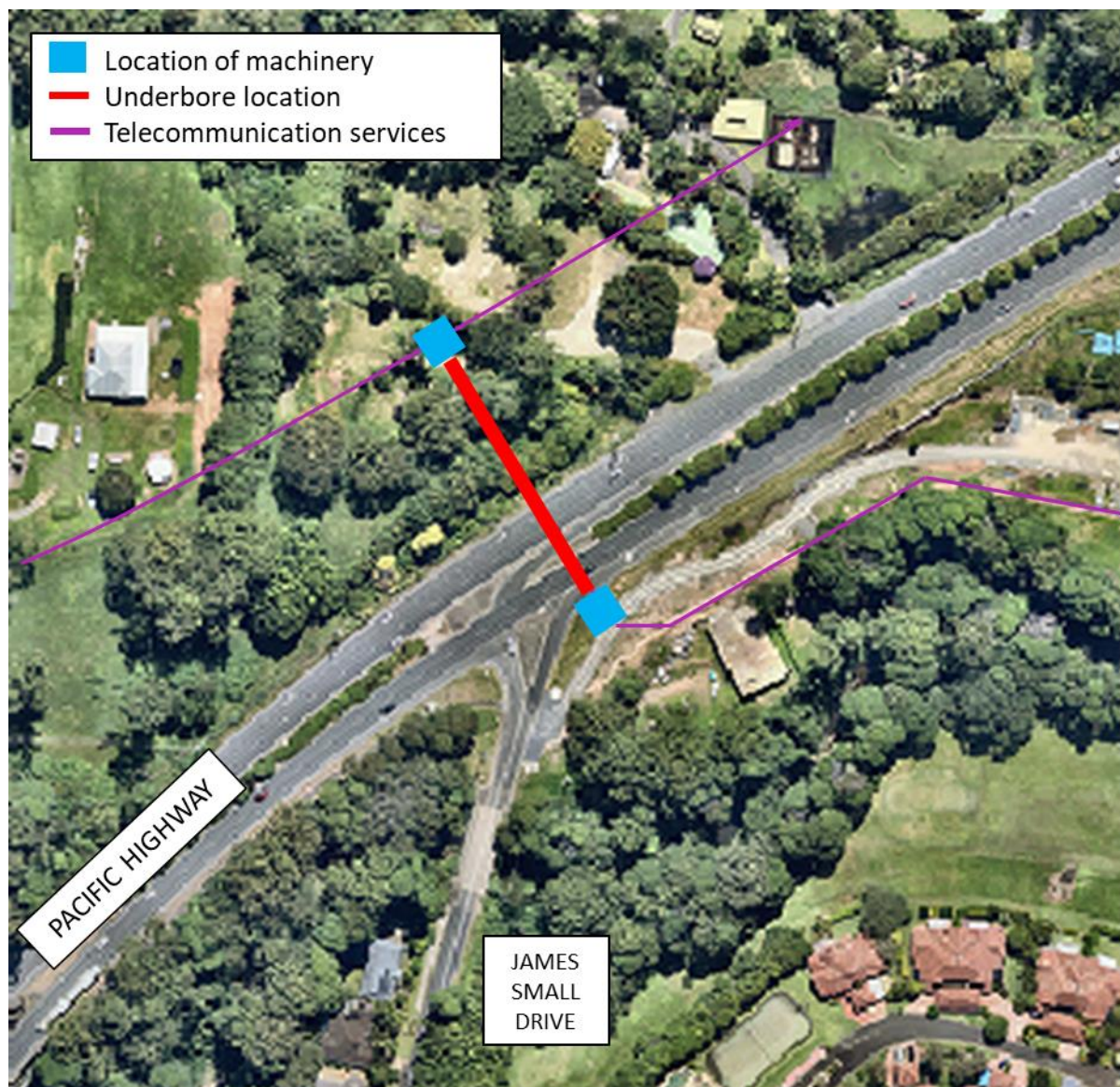
The predicted noise levels are expected to be moderate in nature, which is illustrated in the image below.



Traffic control

measures will be in place with intermittent stoppages on each lane of the highway. Traffic volumes will be monitored during this period, and work methodology may be adjusted when required.

Pedestrians and cyclists may also experience a change in footpath conditions, and traffic control will be in place to escort footpath users to ensure their safety.



## Looking ahead

Over the next three months, additional out of hours work is anticipated for the following:

- Preparing for traffic changes, installing barriers and signage along the Pacific Highway from Pacific Bay Resort to Solitary Islands Way throughout September 2022
- Additional underboring and trenching activities adjacent to the Pacific Highway and local roads, including Old Coast Road and James Small Drive throughout September and early October 2022

Unexpected circumstances may initiate the need for additional out of hours work to occur outside of the above timeframes. In all circumstances, residents will be provided with written notification prior to the work commencing.

Directly impacted residents will be contacted and advised of the likely impact and what we are doing to minimise disruption during the work.

## Contact

If you have any questions or would like more information, please contact our project team:

**1800 550 621**

[coffsharbourbypass@transport.nsw.gov.au](mailto:coffsharbourbypass@transport.nsw.gov.au)

[pacifichighway.nsw.gov.au/coffsharbourbypass](https://pacifichighway.nsw.gov.au/coffsharbourbypass)

## Translating and interpreting service



If you need help understanding this information, please contact the Translating and Interpreting Service on **13 14 50** and ask them to call us on **1800 550 621**.