



Australian Government

BUILDING OUR FUTURE



Have your say

Temporary asphalt batch plant at McIntyres Lane, Gulmarrad

February 2019



Aerial view of McIntyres Lane looking north

The Australian and NSW governments are jointly funding the Woolgoolga to Ballina Pacific Highway upgrade. Roads and Maritime Services, Pacific Complete and its contractor partners are working together to deliver the upgrade.

In this update

- Background
- Asphalt supply between Tucabia and Devils Pulpit
- Proposed site for a temporary asphalt batch plant
- Traffic and access arrangements
- Community feedback and mitigation measures
- Have your say
- Next steps

Background

In July 2018, the project team started a review of the supply strategy for the manufacture and delivery of asphalt for the Woolgoolga to Ballina Pacific Highway upgrade.

The review to date has involved:

- assessing how much asphalt will be used for the upgrade and when and where it is needed
- reviewing the capacity of existing permanent asphalt batch plants and the need for temporary asphalt batch plants
- identifying potential sites for temporary asphalt batch plants
- engaging with directly affected residents to seek their views on proposed sites.

This update outlines the outcomes of our review so far, including the shortlisted location for a temporary asphalt batch plant between Tucabia and Maclean.

Community members are invited to provide feedback on the proposed site for temporary asphalt batch plant by **Friday 1 March**.

Asphalt supply between Tucabia and Devils Pulpit

More than 240,000 tonnes of asphalt is needed for the upgrade between Glenugie and Ballina. Existing permanent batch plants in Alstonville and Coffs Harbour are already engaged to supply the upgrade north of Devils Pulpit and south of Tucabia respectively.

Between Tucabia and Devils Pulpit, about 170,000 tonnes of asphalt will be needed between 2018 and 2020.

In reviewing the asphalt supply strategy for this section of the upgrade, three options were considered:

1. Using existing permanent batch plants only
2. Using existing permanent batch plants and on-site temporary asphalt batch plant
3. Using two on-site temporary batch plants.

These options were then assessed against a number of technical requirements, including the quantities needed, timeframes for production and capacity of existing permanent batch plants.

Due to peak production requirements and considering safety, our work schedule and value for money, the project team's assessment determined two temporary batch plants are needed to supply asphalt for the upgrade between Tucabia and Devils Pulpit.

From the review, the project team has identified:

- one temporary batch plant is needed to supply asphalt between Maclean and Devils Pulpit
- one temporary batch plant is needed to supply asphalt between Tucabia and Maclean.

After considering community feedback, Mororo was identified as the preferred site for a temporary asphalt batch plant between Maclean and Devils Pulpit. Work to mobilise the plant started in late 2018.

Fast facts

- The standard production capacity of a batch plant is about 15,000 tonnes of asphalt per month
- About 75,000 tonnes of asphalt will be needed between Tucabia and Devils Pulpit during peak demand from May to July 2019
- Asphalt batch plants emit very low levels of emissions which do not pose a risk to the health or safety of workers or nearby residents
- The amount of asphalt each temporary batch plant will produce will depend on project requirements and staging of work.

How possible sites were identified

Several sites were considered as possible locations for a temporary asphalt batch plant between Tucabia and Maclean. Several factors were considered in identifying possible locations:

- compliance with the Minister's Conditions of Approval which outline strict requirements for managing the project's construction impacts
- technical requirements including traffic and access arrangements, haulage distances, available land, proximity to the upgrade
- environmental factors including flooding and drainage, air quality, impacts to flora and fauna and ability to mitigate any potential environmental impacts
- community impacts including distance to properties and ability to mitigate any potential impacts.

This information has been used to inform how we will supply asphalt for this section of the upgrade as well as considering safety, our work schedule and value for money.

Proposed site

Following the review, a preferred site was identified at McIntyres Lane, Gulmarrad for the supply of asphalt between Tucabia and Maclean. This location was found to best meet the assessment criteria because it:

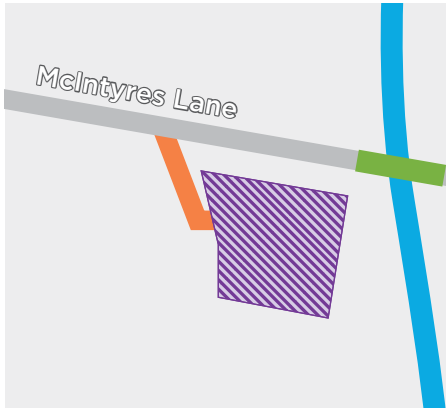
- satisfied all of the technical requirements
- met all of the requirements under the Minister's Conditions of Approval or impacts were able to be mitigated
- it has suitable access from the Pacific Highway for deliveries via an existing approved site access, as well as direct access to the upgrade from McIntyres Lane.

We are seeking your feedback on the proposed temporary asphalt batch plant at McIntyres Lane. We have provided a map in this update showing the location and traffic and access arrangements.

Following the community feedback period, the proposed site will be progressed to the Department of Planning and Environment's independent Environmental Representative for consideration and approval.

Proposed temporary batch plant at McIntyres Lane, Gulmarrad

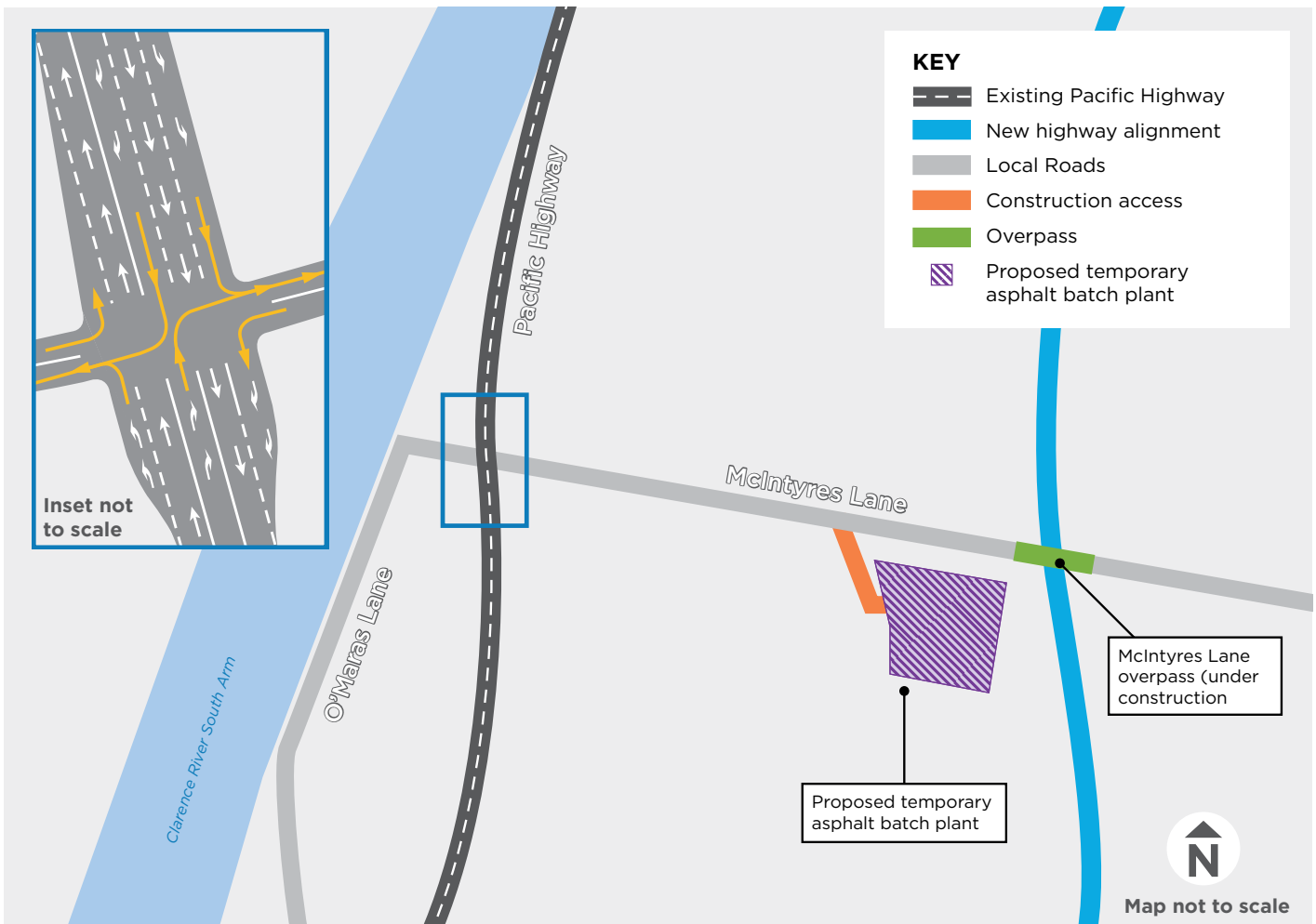
Site location



Benefits:

- ✓ Suitable access for deliveries from the Pacific Highway via an existing approved site access gate
- ✓ Access to the highway through a fully functional intersection
- ✓ Elevated position out of the floodplain
- ✓ Located within 200 metres of the existing McIntyres Lane site office
- ✓ Direct access from the proposed batch plant site to the upgrade
- ✓ Close proximity to the areas of the upgrade where asphalt is needed
- ✓ Includes the required one hectare of available space
- ✓ Closest sensitive receiver is located more than 300 metres from the site
- ✓ Area is within the project's approved project boundary and Environment Protection Licence boundary
- ✓ No additional vegetation removal required.

Traffic and access arrangements



Community feedback

Community feedback received about batch plants to date has been considered in the review of asphalt supply between Tucabia and Devils Pulpit.

We have provided a table which outlines the key matters raised and the measures we will use to mitigate these concerns.

Summary of community concerns	Mitigation measures
<p>Traffic and safety:</p> <ul style="list-style-type: none"> • Increase in the number of light and heavy vehicles • Increasing interaction between construction vehicles and local traffic • Safety of intersections where construction vehicles access the highway • Intersection capacity and potential for increased congestion. 	<p>To ensure access to the temporary batch plant site meets safety requirements, traffic arrangements include:</p> <ul style="list-style-type: none"> • creating a separate construction vehicle only access • minimising interactions between local and through traffic and construction heavy vehicles • reducing the speed limits at accesses • implementing traffic safety initiatives. <p>We have provided a map to show the traffic arrangements for the proposed site. More information about safety initiatives for construction access is provided on the next page.</p>
<p>Air quality:</p> <ul style="list-style-type: none"> • Potential emissions from plant and equipment, odours and dust • Dust from batch plant operation and haulage routes • Potential impacts to health from batch plant operations. 	<p>Temporary asphalt batch plants for the Woolgoolga to Ballina upgrade will be built to stringent standards which are regulated by the NSW Environment Protection Agency.</p> <p>Independent air quality and odour specialists have been engaged to assess the potential impacts and will prepare an air quality impact assessment for the chosen site.</p> <p>To manage air quality impacts, the project team will:</p> <ul style="list-style-type: none"> • install and maintain particulate extraction equipment • maintain bitumen products at the lowest possible temperature • ensure that machinery meets industry standards • monitor and spray water on aggregate stockpiles to minimise dust. <p>The project team will regularly monitor the air quality around the plants to ensure compliance with legislation, air emission standards and the conditions of the project's Environment Protection Licence.</p>
<p>Noise and vibration from batch plant operation and vehicle movements</p>	<p>Independent acoustic specialists have been engaged to assess the potential noise and vibration impacts from construction and operation of a temporary batch plant. Initial assessments indicate that noise and vibration levels would be within the limits set out by the NSW Environment Protection Agency and the project's Environment Protection Licence.</p> <p>Monitoring would be carried out during operation of the batch plant to ensure that noise and vibration levels are within the allowable limits.</p> <p>Construction and operation of a temporary asphalt batch plant will be carried out in accordance with the project's Construction Noise and Vibration Management Plan.</p>
<p>Water management:</p> <ul style="list-style-type: none"> • Effect of batch plant on the quality of ground water in immediate areas • Ground water being taken for batch plant operations • Disposal of contaminated sediment from erosion control ponds • Management of run off from site into adjacent waterways and flooding. 	<p>The project's Conditions of Approval outline strict requirements for the management and mitigation of flooding. Detailed flood modelling has been completed as part our assessment to make sure the project's flood impact objectives have been met.</p> <p>Groundwater management and erosion and sediment controls would be implemented in accordance with the project's Construction Environment Management Plan.</p>

Summary of community concerns	Mitigation measures
Flora and fauna	<p>The proposed site has undergone a biodiversity assessment by an ecologist to ensure potential impacts to flora and fauna can be mitigated.</p> <p>Construction and operation of the temporary batch plant would be carried out in line with the project's Construction Environment Management Plan to ensure that impacts to environmentally sensitive areas are minimised.</p>
Work outside approved construction hours	<p>Most activities for the construction and operation of temporary asphalt batch plants will be carried out during approved construction hours (from 7am to 6pm between Monday and Friday and 8am to 5pm on Saturday).</p> <p>Some work would be done outside normal hours:</p> <ul style="list-style-type: none"> • starting operation early to maximise asphalt production • supplying asphalt during night work, such as traffic changes. <p>All activities would be carried out in line with the project's out of hours work procedure and impacted residents would be notified before work starts.</p>
Hazardous materials and emergency management	<p>All dangerous goods and substances will be stored and used in accordance with the Australian Standard (AS1940).</p> <p>Emergency management plans are in place for situations that may include:</p> <ul style="list-style-type: none"> • personal injury • plant and equipment related emergencies • natural events including flood and fire • environmental events including those involving hazardous materials. <p>The project team ensures that all contractors working on the upgrade have an emergency management plan relating to their work, which is trialled and tested regularly. Fatal and severe risk reviews are also used to proactively plan and manage working environments to avoid emergency situations.</p>

Safety initiatives for managing construction access

Electronic message signs will be used to deliver information to road users about the area they are travelling through.

Radar-activated speed signs will be installed to remind motorists of their speed.

Reduced speed limits where necessary to improve safety near construction access roads.

Monitoring road safety

We continually monitor and review the changes we have made to the road. Some of the ways we do this include:

- auditing road safety before and after we switch traffic onto new or upgraded roads
- video audits
- traffic control queue management
- weekly traffic control work site audits
- traffic management awareness and training workshops for staff and contractors.

Have your say

We are seeking your feedback on the proposed building and operation of a temporary asphalt batch between Tucabia and Maclean. The feedback period closes on **Friday 1 March**.

We have provided a feedback form in this update.

These can be sent to the project team at **w2b@pacificcomplete.com.au** or PO Box 546, Grafton, NSW, 2460.

Information sessions

We will be hosting drop-in sessions for the community to meet with the project team and ask questions.

There will be no formal presentation, so please drop in any time:

Tuesday 19 February, 5pm to 7pm

McIntyres Lane site compound
Gate 77, Pacific Highway, Gulmarrad

Thursday 21 February, 5pm to 7pm

McIntyres Lane site compound
Gate 77, Pacific Highway, Gulmarrad

Next steps

After the consultation period closes, the project team will consider community feedback as part of the environmental assessment of the proposal for a temporary asphalt batch plant.

The assessment of the proposed site will also include, but not be limited to, further consideration of environmental and traffic impacts. The site assessment will be provided to the Department of Planning and Environment's independent Environmental Representative for consideration and approval.

We will provide more information to local residents before work starts to build the batch plant, including working hours and what to expect during construction.



131 450

If you need help understanding this information, please contact the Translating and Interpreting Service on **131 450** and ask them to call us on **1800 778 900**.

Contact us

Have a question or just want to chat to someone about the project?
Contact us any time:



1800 778 900 (toll free)



W2B@pacificcomplete.com.au



pacifichighway.nsw.gov.au



PO Box 546, Grafton NSW 2460



Roads and Maritime Services
21 Prince Street, Grafton NSW 2460

February 2019

RMS 19.1176

Privacy Roads and Maritime Services ("RMS") is subject to the Privacy and Personal Information Protection Act 1998 ("PIIP Act") which requires that we comply with the Information Privacy Principles set out in the PIIP Act. All information in correspondence is collected for the sole purpose of assisting in the delivery this project. The information received, including names and addresses of respondents, may be published in subsequent documents unless a clear indication is given in the correspondence that all or part of that information is not to be published. Otherwise RMS will only disclose your personal information, without your consent, if authorised by the law. Your personal information will be held by RMS at 27 Argyle Street, Parramatta. You have the right to access and correct the information if you believe that it is incorrect.

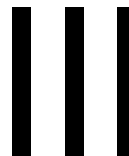


To mail this feedback form fold along the dotted line and seal with clear tape.
Mail your completed form (no stamp required) to address below.

Fold here first

Delivery Address:
PO Box 546
GRAFTON NSW 2460

No stamp required
if posted in Australia



Woolgoolga to Ballina upgrade
Reply Paid 87323
GRAFTON NSW 2460

Fold here second
