



Australian Government

BUILDING OUR FUTURE



Coffs Harbour bypass

Project update – Design refinements

November 2019



The Australian and NSW governments are funding the 14 kilometre Coffs Harbour bypass project. The bypass will boost the regional economy and improve connectivity, road transport efficiency and safety for local and interstate motorists.

Once complete, the bypass will remove thousands of vehicles from the centre of town each day, making Coffs Harbour an even better place to live, work and visit.

The recently displayed environmental impact statement (EIS) was on public exhibition from Wednesday 11 September to Sunday 27 October. The EIS was based on a refined concept design that included building three tunnels at Roberts Hill, Shephards Lane and Gatelys Road, lowering the height of the road up to 18 metres, reducing the maximum road gradient and adding nearly 14 kilometres of low noise pavement.

This update provides information on the project's next steps, which include responding to submissions received during the EIS and preparing an Amendment Report (AR).



**Improving
safety**



Building 3 tunnels



**Up to
12 traffic lights
bypassed**

Artist impression of Shephards Lane tunnel looking north





Next steps

We thank you for sharing your feedback on the project during the public exhibition of the EIS.

We recognise the bypass design is important to the community and have heard your feedback about various elements of the proposed refined concept design, including interchange designs and improvements to bus interchanges.

A Response to Submissions and an AR are being prepared in accordance with Department of Planning, Industry and Environment (DPIE) requirements. These reports will form part of project approval.

The RtS report outlines all submissions received during the EIS exhibition, providing responses to how they are, or will be addressed, as part of the proposal.

The AR outlines and assesses design refinements that were an outcome of feedback received during exhibition of the recently displayed EIS and the display of the concept design in 2018, of key stakeholder meetings held as part of the EIS display and ongoing design development.

During the preparation of the AR we will be carrying out further geotechnical and groundwater assessments. This work supports and informs the AR and the ongoing project design.

While the overall refined concept design including the tunnels will not change, this update outlines the proposed design refinements to various interchanges and local road connections and explains how to provide us with feedback on these refinements. The proposed design refinements improve the design of the project and help to minimise the environmental impact.



Staffed displays

Members of the project team will be available to discuss the design refinements at the following times:

- **25 November to 12 December**
Project display office, 11a Park Avenue, Monday to Thursday, 10am to 4pm
- **28 November**
Pop-up information stall at Park Beach Plaza, 10am to 2pm
- **5 December**
Drop-in information session at Coffs Harbour Showgrounds, 4pm to 7pm



Refinements

The main proposed refinements include:

1. Englands Road interchange
2. School bus stop on Coramba Road near Spagnolos Road
3. Korora Hill interchange
4. Bus interchange at Kororo Public School

Your feedback has led to a number of key changes at these locations including:

- Removing two sets of traffic signals on Englands Road and replacing them with a large roundabout
- Replacing two signalised intersections at Korora Hill interchange with a grade separated roundabout
- Relocating the Luke Bowen footbridge over the Pacific Highway to improve access to Kororo Public School and the bus interchange facility
- Replacing the existing school bus stop on Coramba Road with a new formalised facility

Other changes we have made include reducing the height of the new motorway over North Boambee Road. This lessens earthworks, the project's footprint and grade line in this area and improves flood outcomes.



Ancillary sites

Potential additional ancillary sites have been identified for use during construction of the proposed bypass. These sites are all on land owned by Roads and Maritime Services and Coffs Harbour City Council and will be identified in the AR.

These sites would be used for various activities, including storage of building materials, material processing, site compounds and/or temporary workshops.

Before ancillary sites are confirmed, investigations into plants, animals and heritage would be carried out.



Coffs Harbour bypass



1

Englands Road interchange

The Englands Road interchange has been significantly improved from the previous design. Outlined below, the changes include lowering the height of the interchange over Englands Road and moving the location of the fauna underpass to better align with the identified koala corridor.

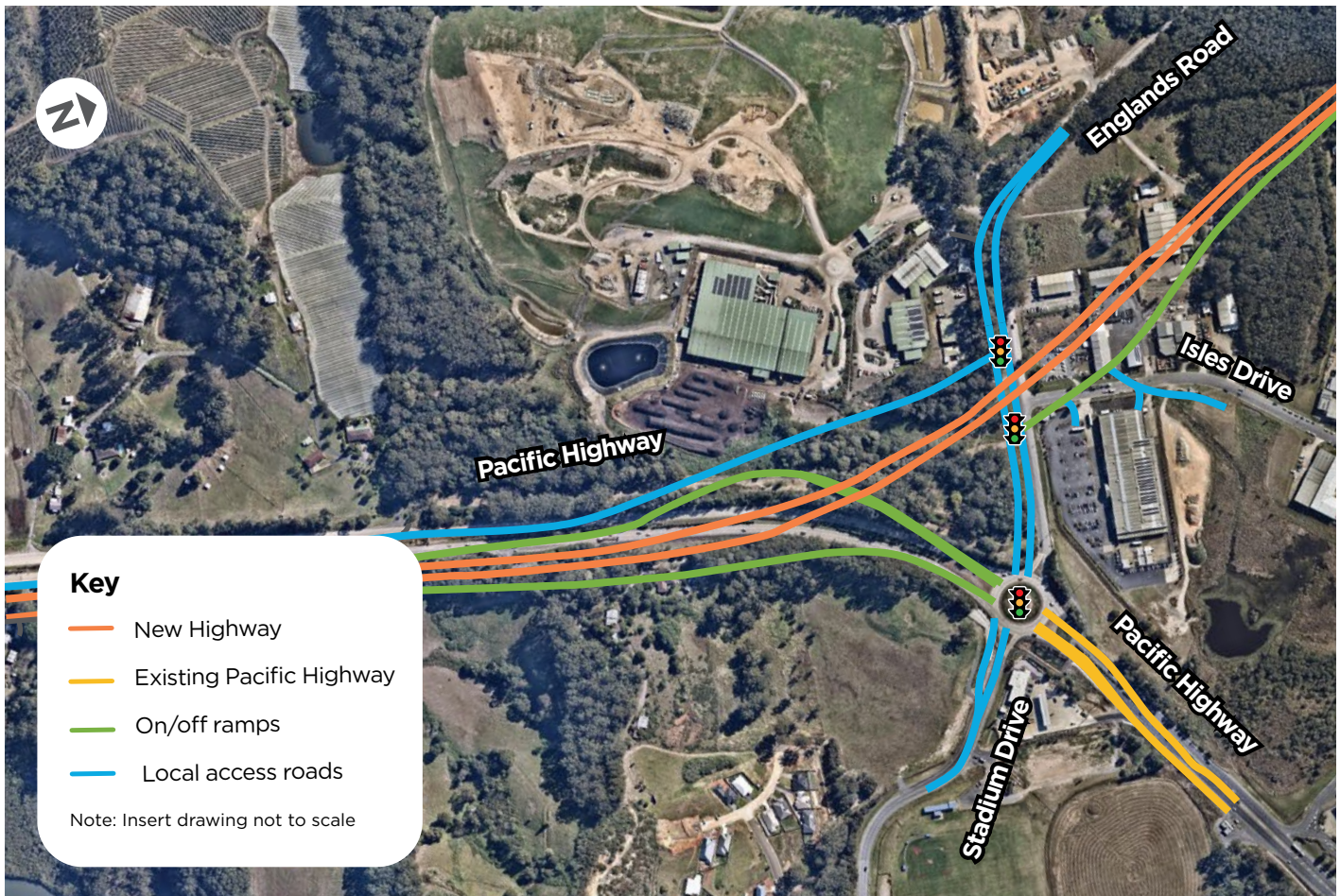
Artist impression of the refined Englands Road interchange

Benefits include:

- Substantially lowering the height of the interchange over Englands Road by up to 5.7 metres, thereby improving visual amenity and reducing engine noise
- Northbound traffic can directly access Isles Drive, meaning they no longer have to enter Isles Drive from the intersection with the existing Pacific Highway
- Improves traffic flows and reduces delays through the removal of two sets of traffic signals
- Improves functionality and simplicity of the interchange for motorists in way finding
- Removes the need to potentially upgrade the existing intersection of Isles Drive and the Pacific Highway
- Improves constructability with reduced traffic impacts during construction
- Provides opportunities to reduce impacts on koala habitat and areas of Aboriginal heritage
- Provides opportunities for a southern gateway entrance to Coffs Harbour as part of the urban design proposal.

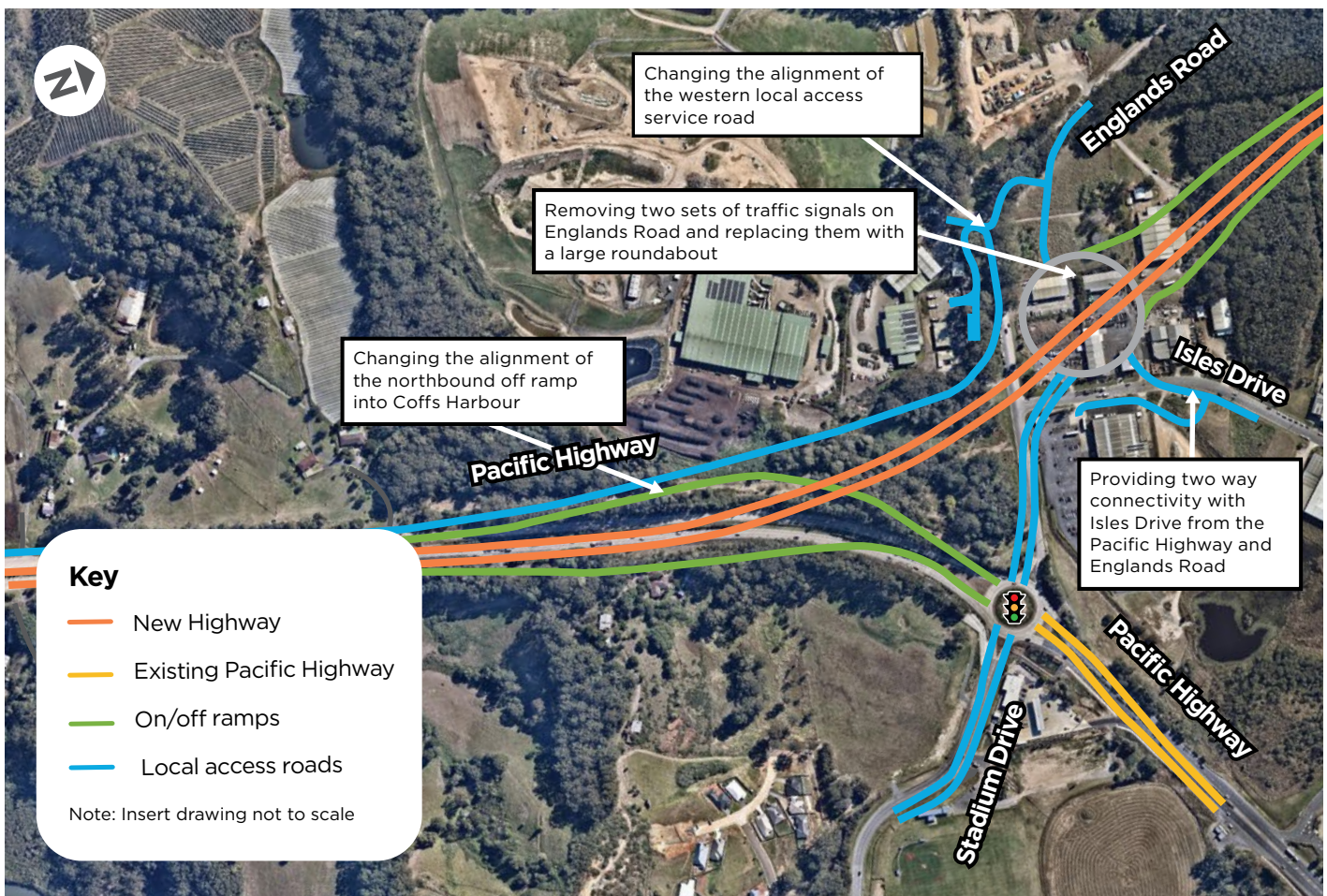
1

Englands Road interchange - EIS design September 2019



1

Englands Road interchange - refined design November 2019



A new, formalised bus stop will be built along the northern side of Coramba Road to the east of the existing interchange.

Benefits include:

- Protecting the facility and its users from Coramba Road traffic by a raised concrete median
- Improving safety for pedestrians, bus users and motorists using the facility
- New facility will cater for four, 12.5 metre long buses.





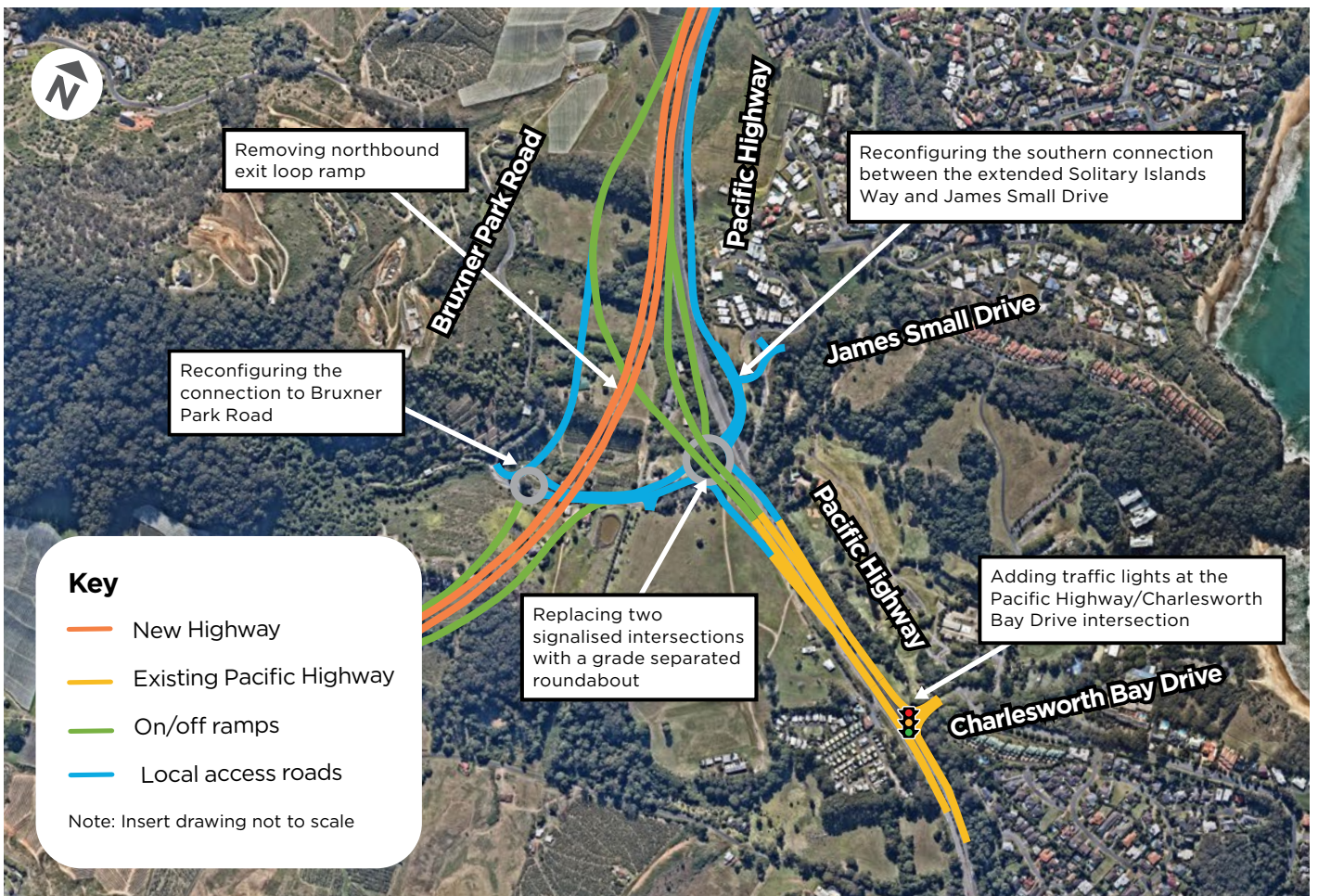
Korora Hill interchange has also been improved significantly. The improvements provide benefits to function and accessibility and include removing two sets of traffic lights and the northbound exit loop ramp, providing a more direct access to and from Coffs Harbour and reducing the overall interchange footprint.

Artist Impression of the refined Korora Hill interchange



Benefits include:

- Improving traffic flows and reducing delays by the removal of two sets of traffic signals
- Improving way finding and functionality through a more intuitive and simplified interchange
- Reinstating access to all properties
- Improving road safety
- Improves constructability with reduced traffic impacts during construction
- Provides opportunities to reduce impacts on koala habitat and areas of Aboriginal heritage
- Reduces property impacts
- Provides opportunities for a northern gateway entrance into Coffs Harbour as part of the urban design proposal.
- Improves connectivity with the local road network
- Provides more direct traffic flows into and out of Coffs Harbour, which is the main direction of traffic flow during peak times.

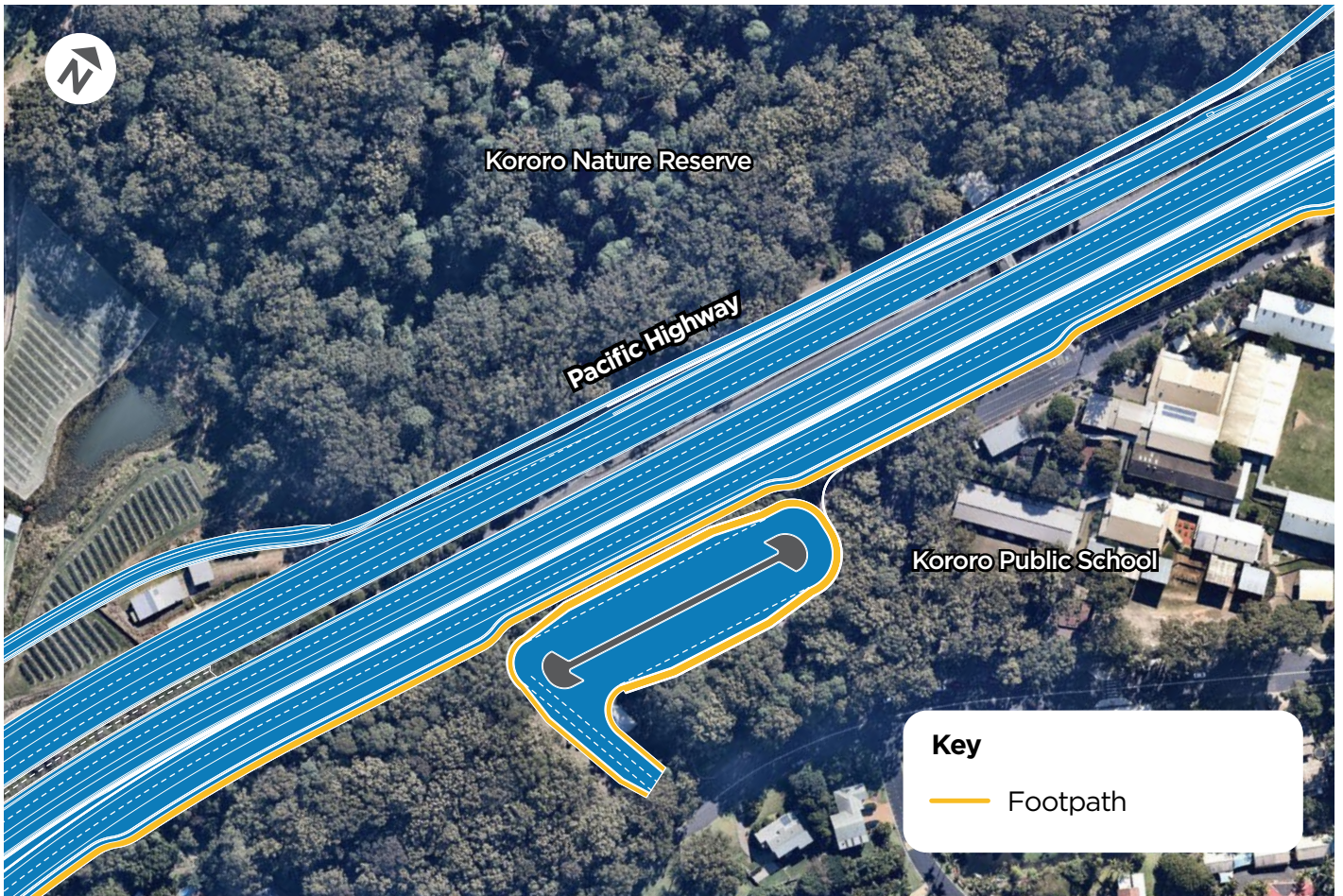


The bus interchange at Kororo Public School has been improved with a number of changes, including changing the access point from James Small Drive to the eastern service road to remove the need for additional buses to travel on James Small Drive.

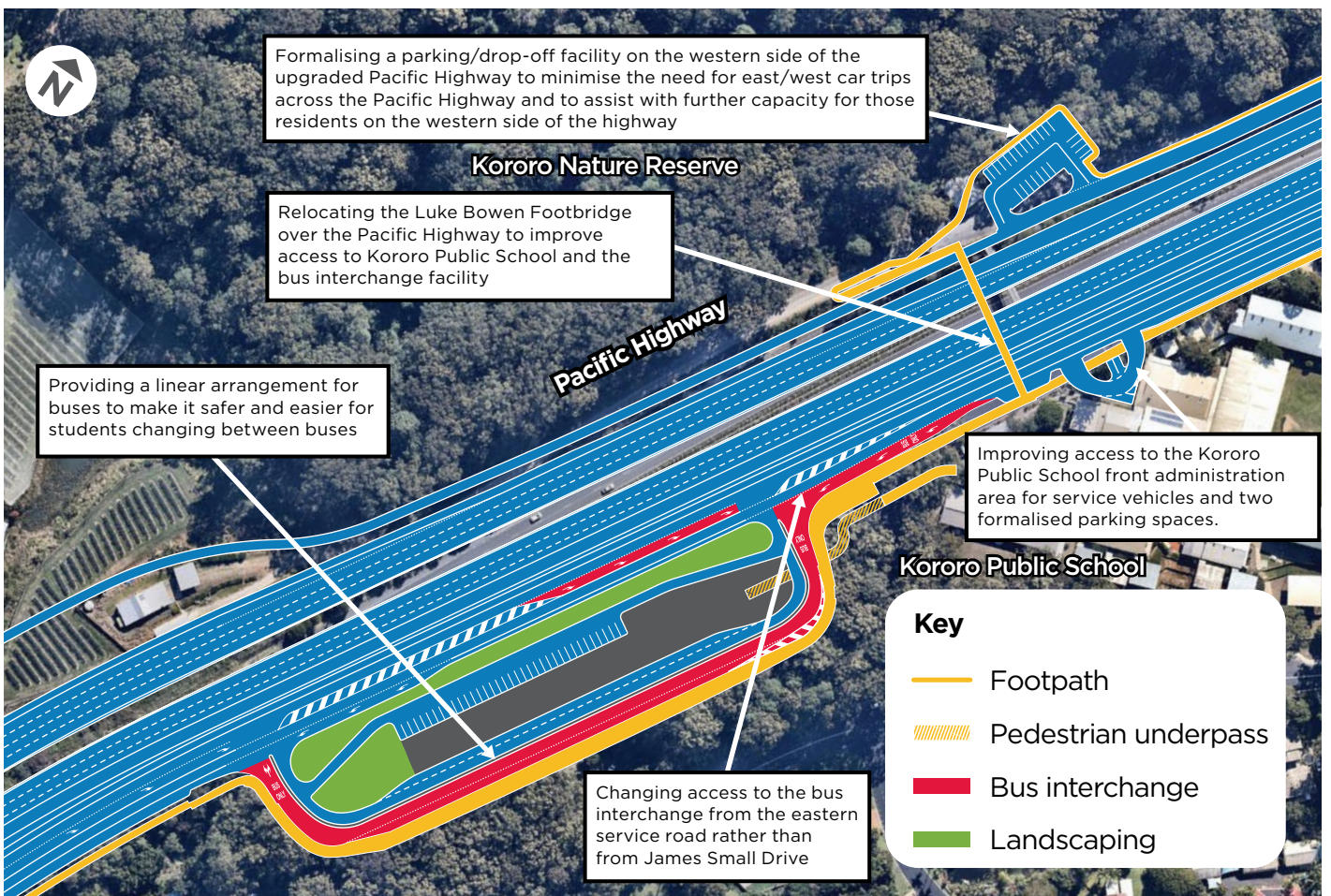
Benefits include:

- Removing the need for additional bus traffic on James Small Drive
- All bus movements are directly off the eastern service road and have the ability to head north or south to maintain bus schedules as closely as possible
- Separating bus and light vehicle entry points with barriers and fencing to remove conflict points between pedestrians and vehicles
- Providing a 117 metre long 'kiss-and-drop' facility, potentially reducing light vehicle school drop-off and pick-up movements on James Small Drive
- Grade separated crossing points to remove all conflict points between pedestrians and vehicles
- Providing a bus interchange that caters for nose-to-tail operation for 8 x 12.5 metre long buses and removing conflict points from bus set down to front entrance of Kororo Public School
- Improving short and long term carparking, including the addition of carparks for staff, the disabled and parents dropping-off/picking-up children
- Luke Bowen footbridge re-located in close proximity to Kororo Public School's main entrance
- Providing off-road shared user paths.

4 Bus interchange at Kororo Public School – EIS design September 2019



4 Bus interchange at Kororo Public School – refined design November 2019



Have your say

We are now seeking community feedback on the design refinements until **Friday 13 December 2019**. Comments can be sent via email or post at the addresses below.

The project team will be available to discuss the design refinements at the project display office, which will be open Mondays to Thursdays from 10am to 4pm, from **Monday 25 November until Thursday 12 December 2019**.

You can also talk to the project team on:

- **28 November**
Pop-up information stall at Park Beach Plaza, 10am to 2pm
- **5 December**
Drop-in information session at Coffs Harbour Showgrounds, 4pm to 7pm

A number of meetings will be held with key stakeholders to provide an opportunity to view and comment on the design refinements.

Next steps

We will consider your feedback on the design refinements along with other design changes made since the EIS display, finalise the AR and RtS and submit to DPIE by mid-2020. The RtS and AR will be made publically available at the time they are submitted to DPIE.

DPIE will review the reports to reach a decision on the project. The Minister for Planning then determines if the project is approved.

If the Minister approves the project it will be constructed and operated in accordance with the mitigation measures described in the EIS and AR and the Minister's Conditions of Approval.

Working with the community

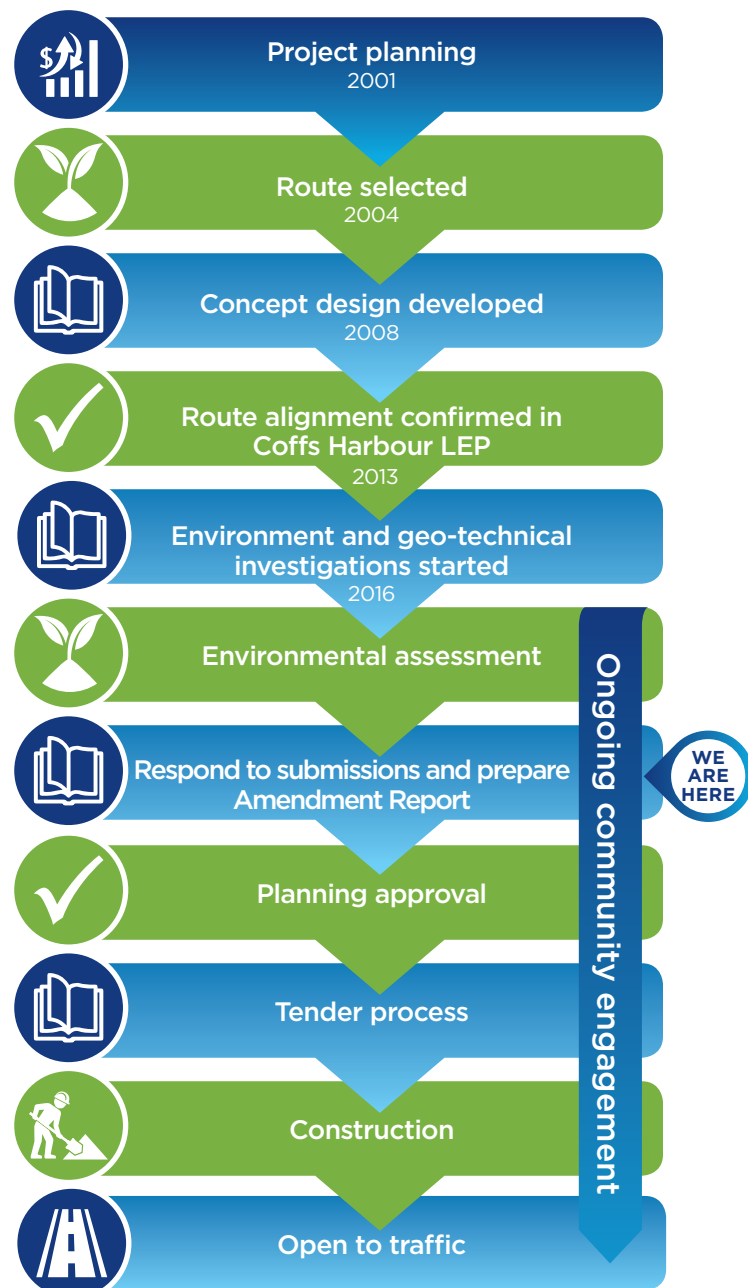
We will continue to liaise with stakeholders and the community during the detailed design, construction and operation phases. This ongoing engagement will play an important role in reducing the potential impacts and enhancing the benefits of the project for everyone.



Visit our new interactive web portal to find out more
pacifichighway.nsw.gov.au/coffsharbourbypass

If you need help understanding this information, please contact the Translating and Interpreting Service on **131 450** and ask them to call us on **1800 550 621**.

What happens next?



Contact us

- 1800 550 621 (toll free)
- @ coffsharbourbypass@rms.nsw.gov.au
- PO Box 546, Grafton NSW 2460
- Visit us at 11a Park Avenue, Coffs Harbour



November 2019
RMS.19.1447

Privacy Roads and Maritime Services ("RMS") is subject to the Privacy and Personal Information Protection Act 1998 ("PPIP Act") which requires that we comply with the Information Privacy Principles set out in the PPIP Act. All information in correspondence is collected for the sole purpose of delivering this project. The information received, including names and addresses of respondents, may be published in subsequent documents unless a clear indication is given in the correspondence that all or part of that information is not to be published. Otherwise RMS will only disclose your personal information, without your consent, if authorised by the law. Your personal information will be held by RMS at 27 Argyle Street Parramatta NSW 2124. You have the right to access and correct the information if you believe that it is incorrect.