



Australian Government

BUILDING OUR FUTURE



April 2016

Woolgoolga to Ballina Pacific Highway upgrade

Soft soil early work activities at Woodburn from April 2016

The NSW and Australian governments are jointly funding the Woolgoolga to Ballina Pacific Highway upgrade, which includes a 1.7 km section of soft soil work between Trustums Hill Road and Woodburn-Evans Head Road.

It is expected the settlement of the soft soils in this section will be finished in early 2017, weather permitting. Once complete, this early work will enable major work to start on the main alignment.

How will the work affect you?

Work to be carried out between April and June 2016 (weather permitting) includes:

- Installation of environmental controls, dust gauges and nest boxes
- Establishment of the main site office and compound at Tuckombil Road
- Temporary traffic arrangements including intersection upgrades on the Pacific Highway at Tuckombil Road and Watson Street to improve access and safety
- Installation of boundary fencing, including clearing of vegetation and processing of materials
- Relocation of electricity utilities
- Stripping topsoil and stockpiling it for reuse in landscaping
- Placing foundation and drainage layers of rock and the installation of wick drains

The map on the next page helps explain our work location. All work for the upgrade is regulated by a construction environmental management plan (CEMP) which is approved by the Department of Planning and Environment. The CEMP has strict conditions about managing the project's impact on the environment. We will try to minimise impacts to residents during this work. Access to residents' properties will be maintained and traffic control will be in place where required.

You may notice some changes around the local area including:

- Increased vehicle and truck movements on local roads and the existing Pacific Highway
- Increased number of site vehicles and contractors.

Work hours

Work will be carried out from 7am to 6pm on weekdays and on Saturdays from 8am to 5pm. We will notify you in advance if we need to do any work outside these times.

For more information

If you have any questions, please call the Woolgoolga to Ballina project toll free line on 1800 778 900 dial 1, email info@seecivil.com.au or visit the project website rms.nsw.gov.au/W2B

Upcoming traffic changes

We will be upgrading two Pacific Highway intersections in late April to improve safety for construction traffic and road users, and to maintain traffic flow.

Watson Street

On the highway at Watson Street, new turning lanes will be installed. This will involve widening and laying asphalt to widen the highway, line marking and new signage. The work will take about three weeks to finish, weather permitting.

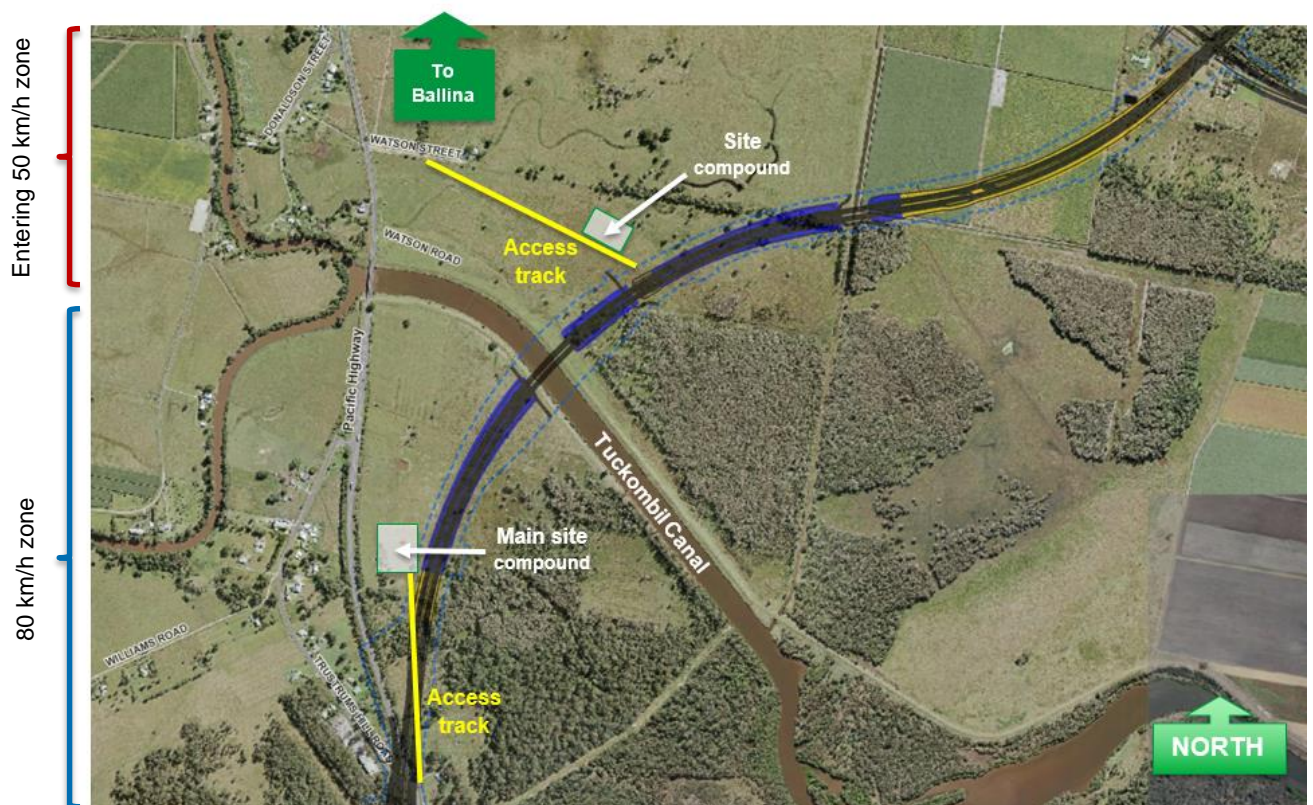
Tuckombil Road

At Tuckombil Road, turning lanes will require new line marking and signage. The work will take one week to finish, weather permitting. New speed limits will apply from this intersection through to the Woodburn speed zone for the duration of the project.

The intersection upgrades will take place during the day with reduced speed limits applied and lane closures may be required. Motorists are reminded to obey all signage and directions from traffic controllers.

Please keep to speed limits and follow the direction of traffic controllers and signs. For the latest traffic updates, you can call 132 701, visit [livetraffic.com](https://www.livetraffic.com) or download the Live Traffic app.

Thank you for your patience during this important work.



Soft soil work area (in blue), access tracks (in yellow) and site compound locations (in white).
Speed zones on the Pacific Highway are also shown.