



Australian Government

BUILDING OUR FUTURE



March 2017

Temporary intersection changes at Mororo Road, Mororo

The Australian and NSW governments are jointly funding the \$4.36 billion Woolgoolga to Ballina Pacific Highway upgrade. Roads and Maritime Services Pacific Highway Office and Pacific Complete are working together to deliver the project.

Feedback on the proposed changes to the intersection of Mororo Road and the Pacific Highway was invited from local residents between 27 February and 3 March 2017.

In response to community comments we have made improvements to this intersection including providing a new southbound right hand turn lane from the Pacific Highway into Mororo Road. The changes will improve safety while we have significant truck movements in this area for the highway upgrade.

Work will start on the intersection changes in March 2016, weather permitting. This construction work will take about four weeks to complete, weather permitting and the new arrangements will be in place for about 12 months. It will then change again to manage traffic for ongoing construction.

In response to your feedback we have:

- included a new right turn deceleration lane from the Pacific Highway into Mororo Road (southbound)
- removed the right turn acceleration lane from Mororo Fire Trail onto the Pacific Highway (northbound).

We are committed to safely building the new highway while maintaining capacity on the road network for all motorists. While we are working, speed zones of 80 kilometres/hour will be used and we will return the speed limits to 100 kilometres/hour outside of construction hours, when possible. There will be a number of changes to speed limits while we build the new road and we will continue to keep you informed as work progresses.

Changes to the intersection will now include:

- reducing the speed limit to 80 kilometres/hour on the Pacific Highway for about 500 metres either side of the intersection with Mororo Road, during construction hours
 - installing a new right turn deceleration lane from the Pacific Highway into Mororo Road (southbound)
 - installing a new right turn acceleration lane from Mororo Road onto the Pacific Highway (southbound)
 - installing new line marking.
-

Changed conditions at intersection of Mororo Road and Pacific Highway, Mororo

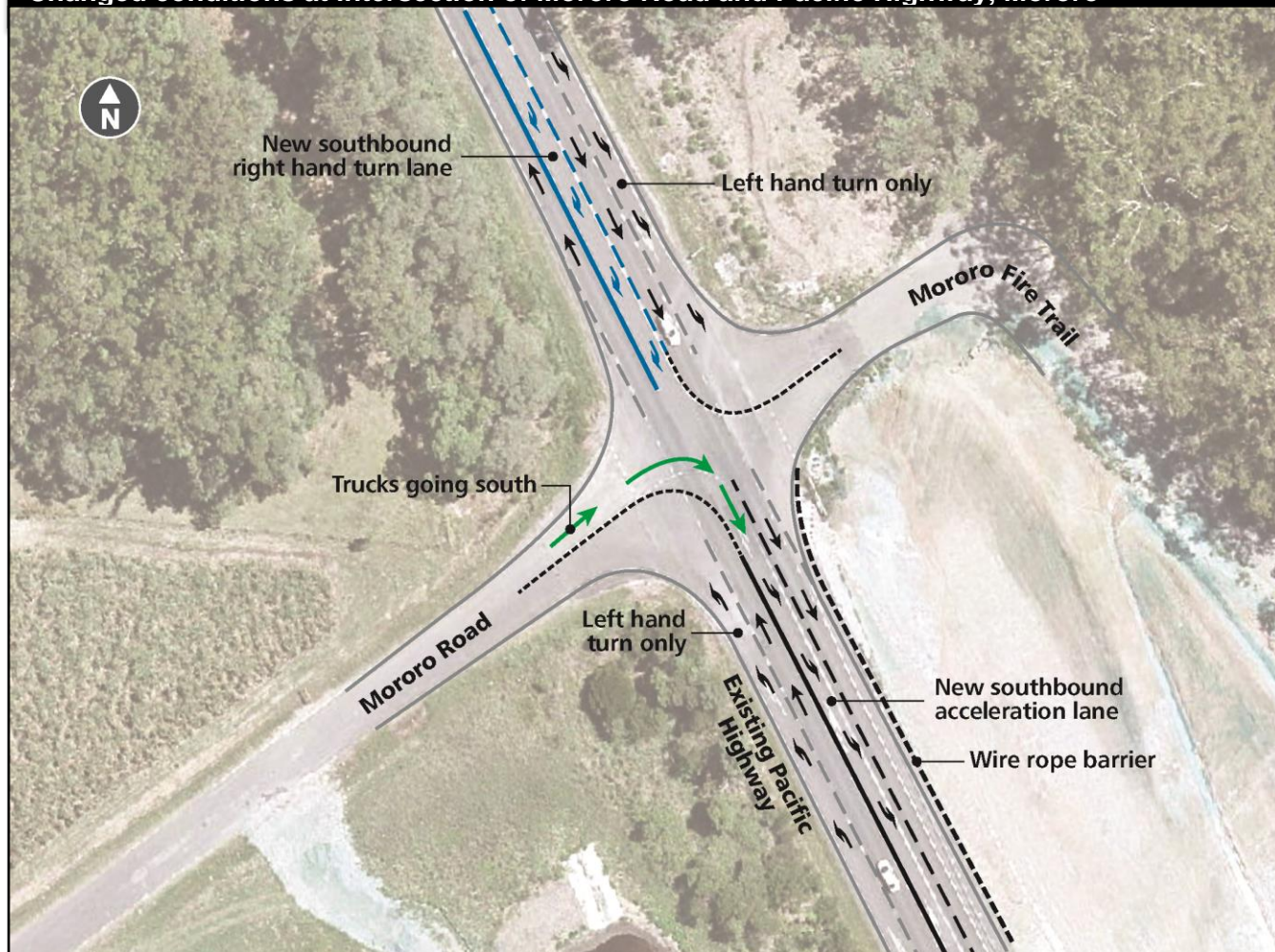


Image not to scale (indicative only)

What happens next

The new intersection arrangement is temporary only and if heavy vehicle haulage routes change, the project team may be required to alter the intersection. The project team will continue to consult with the community on changes to this intersection.

How this work will affect you

There will be some temporary traffic changes while this work is carried out. Reduced speed limits and lane closures may be in place for access and may affect travel times. Please keep to speed limits and follow the direction of traffic controllers and signs. For the latest traffic updates call 132 701, visit livetraffic.com or download the Live Traffic NSW App.

Contact us

For more information about the work please contact the project team on 1800 778 900, email W2B@pacificcomplete.com.au or visit the project website at www.rms.nsw.gov.au/W2B.

We apologise for any inconvenience and thank you for your patience during this important work.



If you need help understanding this information, please contact the Translating and Interpreting Service on 131 450 and ask them to call us on 1800 778 900.



Transport
Roads & Maritime
Services