



Australian Government

BUILDING OUR FUTURE



November 2017

Next stage of work between Maclean and the Yamba interchanges for the Woolgoolga to Ballina Pacific Highway upgrade

The Australian and NSW governments are jointly funding the \$4.36 billion Woolgoolga to Ballina Pacific Highway upgrade. Roads and Maritime Services Pacific Highway Project Office and Pacific Complete are working together to deliver the project.

The Woolgoolga to Ballina project team is starting vegetation removal, civil and earthwork between the Maclean and Yamba interchanges, James Creek. This work is expected to start in December and will take about 10 months to complete, weather permitting.

What is involved?

This work will involve:

- Installing environmental controls
- Removing trees and vegetation along the western side of the existing highway, from the Maclean interchange to Koala Drive (known locally as Farlows Lane)
- Removing and transporting earth material
- Building foundations for the new northbound carriageway
- Building approaches for the new bridges
- Installing drainages and permanent fencing.

A map has been provided to show the location of this work.

Access points for heavy vehicles

All materials taken from the Maclean site will be delivered to the required location by trucks via the Pacific Highway. Materials will be moved within the project boundary as much as possible to reduce the number of construction vehicles on the highway.

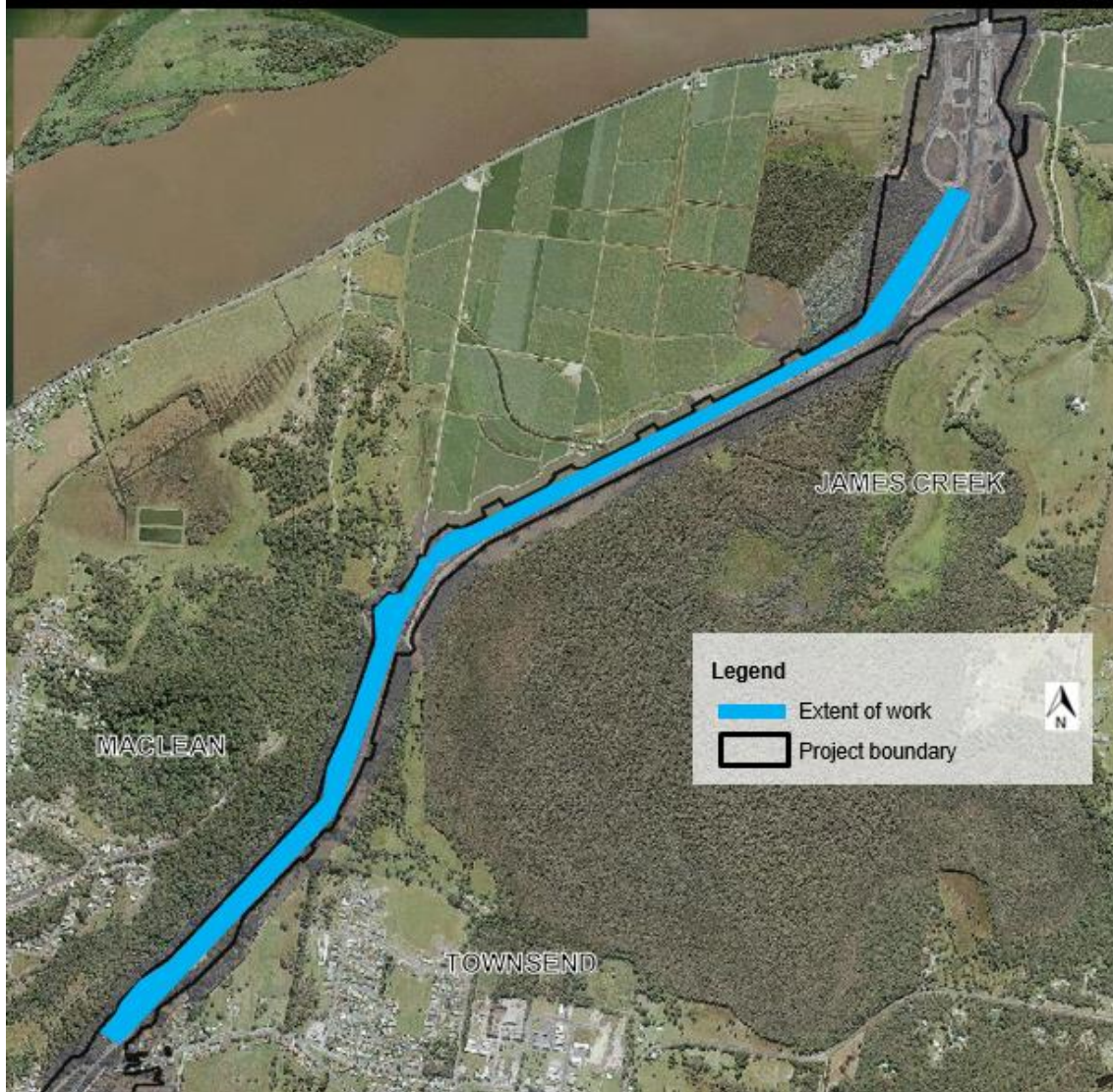
How will the work affect you?

Our work may be noisy at times and may cause some disturbance from trucks and other heavy machinery. We will carry out dust and noise monitoring throughout this work to minimise the impact, where possible.

Traffic changes

There will be some temporary traffic changes while this work is carried out to ensure the safety of road users and workers. Reduced speed limits and lane closures may be in place and may affect travel times. Please keep to speed limits and follow the direction of traffic controllers and signs. For the latest traffic updates call 132 701, visit livetraffic.com or download the Live Traffic NSW App.

Next stage of work between Maclean and Yamba interchanges



Work hours

Typically work will be carried out during the project's approved construction hours, which are:



7am – 6pm Monday – Friday

8am – 5pm Saturdays

In areas where residents live more than 200 metres from the work area, extended work hours are allowed from Monday to Friday between 6am and 7am and 6pm and 7pm. Directly affected residents will be notified in advance of any work the project team is doing outside of these hours.

Contact us

If you have any questions, please contact the Woolgoolga to Ballina project toll free line on 1800 778 900 dial 1, W2B@pacificcomplete.com.au or visit the project website rms.nsw.gov.au/W2B. We apologise for any inconvenience and thank you for your patience during this important work.



131 450

If you need help understanding this information, please contact the Translating and Interpreting Service on 131 450 and ask them to call us on 1800 778 900.