



Australian Government

BUILDING OUR FUTURE



July 2016

Using rock from Lang Hill to build the Woolgoolga to Ballina upgrade

The Australian and NSW governments are jointly funding the \$4.36 billion Woolgoolga to Ballina Pacific Highway upgrade.

Rock material for the highway is available from the south facing slope of Lang Hill next to the project route and falls within the approved project boundary. Roads and Maritime Services own this land and it was identified in the environmental impact assessment as a suitable location to extract material for the upgrade. Using material from this site to build the road will reduce travel distances and the number of trucks on the existing highway, improving safety and efficiency for all road users.

What are we proposing?

We will remove about 220,000 cubic metres or the equivalent of 88 Olympic swimming pools of Gatton sandstone and have approval to remove up to 300,000 cubic metres from the site. The rocks and earth will be transported within the project boundary directly from the site.

To prepare for work we need to:

- Remove scattered patches of vegetation
- Establish site access
- Install environmental controls and site security, including fencing
- Install staff amenities
- Install plant and equipment.

Operational activities involve:

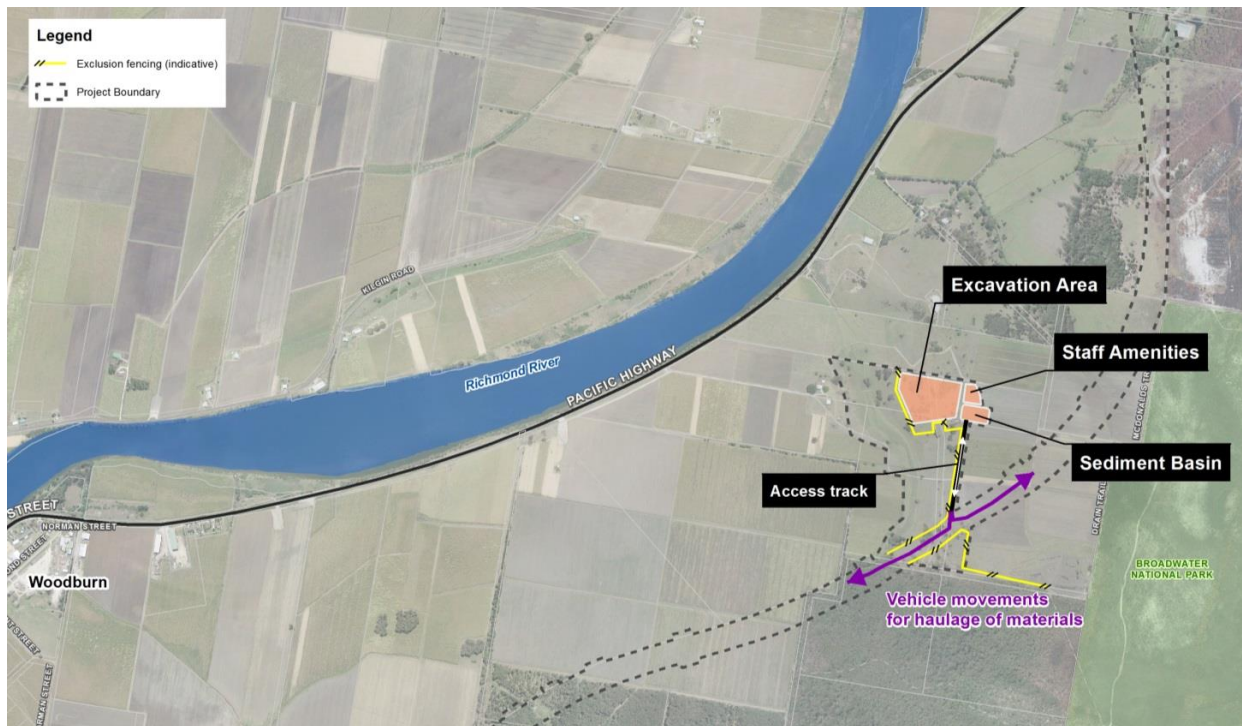
- Operating machines and equipment within the site
- Excavating, drilling and blasting
- Crushing rock material
- Hauling extracted material from the site along the construction corridor.

The map on the next page helps explain our work location. The design for the site has been refined to reduce the footprint of the excavation area. We are working with the Aboriginal community to minimise the impact and will install exclusion fencing to protect the cultural heritage. Work will start from late 2016 and the site will be operational for about two years. Once work is finished the area will be restored and revegetated.

How will the work affect you?

Excavation, drilling and blasting techniques will be used to extract the material from Lang Hill. The material will then require crushing and screening to make it a uniform size and shape that meets road building specifications. It is proposed to set up a crushing and screening operation within the site area.

Noise and dust will be managed to reduce the impact to the community. This will include using mitigation measures like water sprays to increase the moisture content of the material, making sure equipment is serviced and maintained, using non tonal reversing beepers, placing stockpiled materials in mounds to help reduce noise as well as noise monitoring.



Proposed Lang Hill site

Hours of Work

Approved work hours are 7am to 6pm on weekdays and Saturdays from 8am to 5pm.

Approved hours for blasting are 9am to 5pm weekdays and Saturdays from 9am to 1pm.

Next Steps

We are seeking your feedback on use of the Lang Hill site and any concerns you may have on its operation. Your feedback will help Roads and Maritime Services reduce the impact of work on the community. The project team will consider your feedback and prepare responses in our assessment. You will be provided with information about the way we plan to reduce the impacts based on your feedback.

Please fill in the feedback form attached and return it to us by **Thursday 11 August 2016**.

You can return it by:

Email: W2B@pacificcomplete.com.au

Post: Please use the supplied reply paid envelope.

Alternatively, you can provide your feedback over the phone by calling **1800 778 900 (dial 1)**.

For more information

If you have any questions, please call the Woolgoolga to Ballina project toll free line on 1800 778 900 dial 1, email W2B@pacificcomplete.com.au or visit the project website rms.nsw.gov.au/W2B



If you need help understanding this information, please contact the Translating and Interpreting Service on 131 450 and ask them to call us on 1800 778 900



Australian Government

BUILDING OUR FUTURE



Woolgoolga to Ballina – Lang Hill site

Feedback form

We would like to confirm your agreement with our approach to the Lang Hill site, as outlined in the attached letter.

- ☐ Yes I agree
- ☐ No I don't agree – If you don't agree would you please provide feedback on your key concerns.

Would you like to project team to contact you to discuss your concerns?

- ☐ Yes ☐ No

Name:	
Address	
Phone:	
Email:	
Signature	
Date	

Key issues raised will be included in the site's assessment which will be provided to the Department of Planning and Environment.



If you need help understanding this information, please contact the Translating and Interpreting Service on 131 450 and ask them to call us on 1800 778 900