



Australian Government

BUILDING OUR FUTURE



March 2018

Short temporary closures of the Pacific Highway and also River Street at Harwood and temporary detours at Yamba interchange for the Woolgoolga to Ballina Pacific Highway upgrade

The Australian and NSW governments are jointly funding the \$4.36 billion Woolgoolga to Ballina Pacific Highway upgrade. Roads and Maritime Services' Pacific Highway Project Office, Pacific Complete and its contractor partners are working together to deliver the project.

To continue building the new bridge over the Clarence River at Harwood, the project team needs to transport and install large precast concrete pieces including girders that are delivered on large trucks (called oversize and over mass) and deck panels, which are delivered on standard trucks. The project team has already installed 40 of the 144 girders for the new 35 span, 1.5 kilometre bridge.

The project team will be transporting:

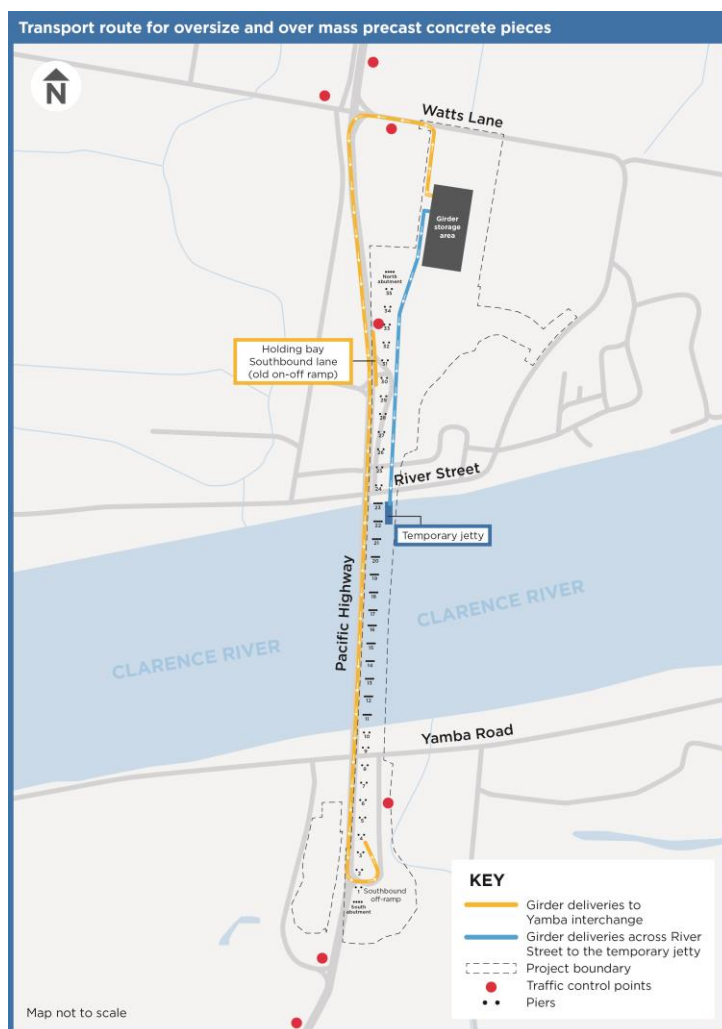
- 44 precast concrete pieces on the Pacific Highway, across the existing Harwood Bridge and along the Yamba off ramp and Yamba Road from **mid-March to end June 2018**
- 48 precast concrete pieces across River Street, Harwood from **mid-March to late October**.

This work will involve:

- Temporary closures of the Pacific Highway for about 15 minutes
- Temporary detours to and from Maclean and Yamba
- Temporary closures of River Street, Harwood for about five minutes.

There will be no deliveries on public holidays.

Transporting concrete pieces and installing girders over Yamba Road and the Yamba interchange southbound off ramp will be carried out at night to minimise traffic impacts and improve safety for motorists and workers. There will be short delays and motorists are advised to plan their journeys.



How will the work affect you?

Pacific Highway and Yamba interchange

There will be up to four return trips per night until the 44 concrete pieces are delivered. Expect closures of up to 15 minutes while the girders are transported south from the precast yard, over the Harwood Bridge to Yamba interchange, and five minutes as the empty trucks return northbound over the Harwood Bridge to the precast yard.

Detours will be in place on the southbound Yamba off ramp and Yamba Road while concrete pieces are installed over these roads. We have provided maps to explain detours. Closures and traffic detours will be in place between:

- 6pm and 7am from Monday to Friday
- 6pm on Friday and 7am on Saturday
- 6pm on Sunday and 7am on Monday.

Clarence River

The lift span of the existing bridge will be temporarily closed from mid-April to early September 2018 to maintain safety while we build the new bridge. During this time, the lift span will be available to **open from 5pm on Saturday and all day on Sunday**. Motorists should plan for minor delays at these times.

A navigation channel will be maintained at all times for water users not requiring the lift span. The channel will be indicated by port (red) and starboard (green) buoys and will be in place for the duration of the work to allow vessels to transit through the area at all times.

River Street, Harwood

Girders will be installed over River Street in the next fortnight, girder lifts will be timed to avoid school pick up and drop off periods. Closures of up to five minutes can also be expected as concrete pieces are transported across the road to the temporary jetty on the northern bank.

Think PAC – Plan, Awareness, Caution

There will be delays. Before travelling we ask motorists to remember PAC to help make your journey as safe and efficient as possible.

Plan	Register for email and SMS alerts so we can let you know when road closures and detours are in place. To register phone 1800 778 900 (dial 1) or email W2B@pacificcomplete.com.au
	Check for traffic updates, visit livetraffic.com , download Live Traffic NSW App or call 132 701.
Awareness	Look for electronic message boards located on the Pacific Highway and Yamba Road alerting road users about deliveries and changed traffic conditions.
Caution	Traffic controllers will be onsite to direct motorists. Please keep to speed limits and follow signs and traffic controllers' directions.

For more information

For more information about the work please contact the project team on 1800 778 900, email W2B@pacificcomplete.com.au or visit the project website at www.rms.nsw.gov.au/W2B.

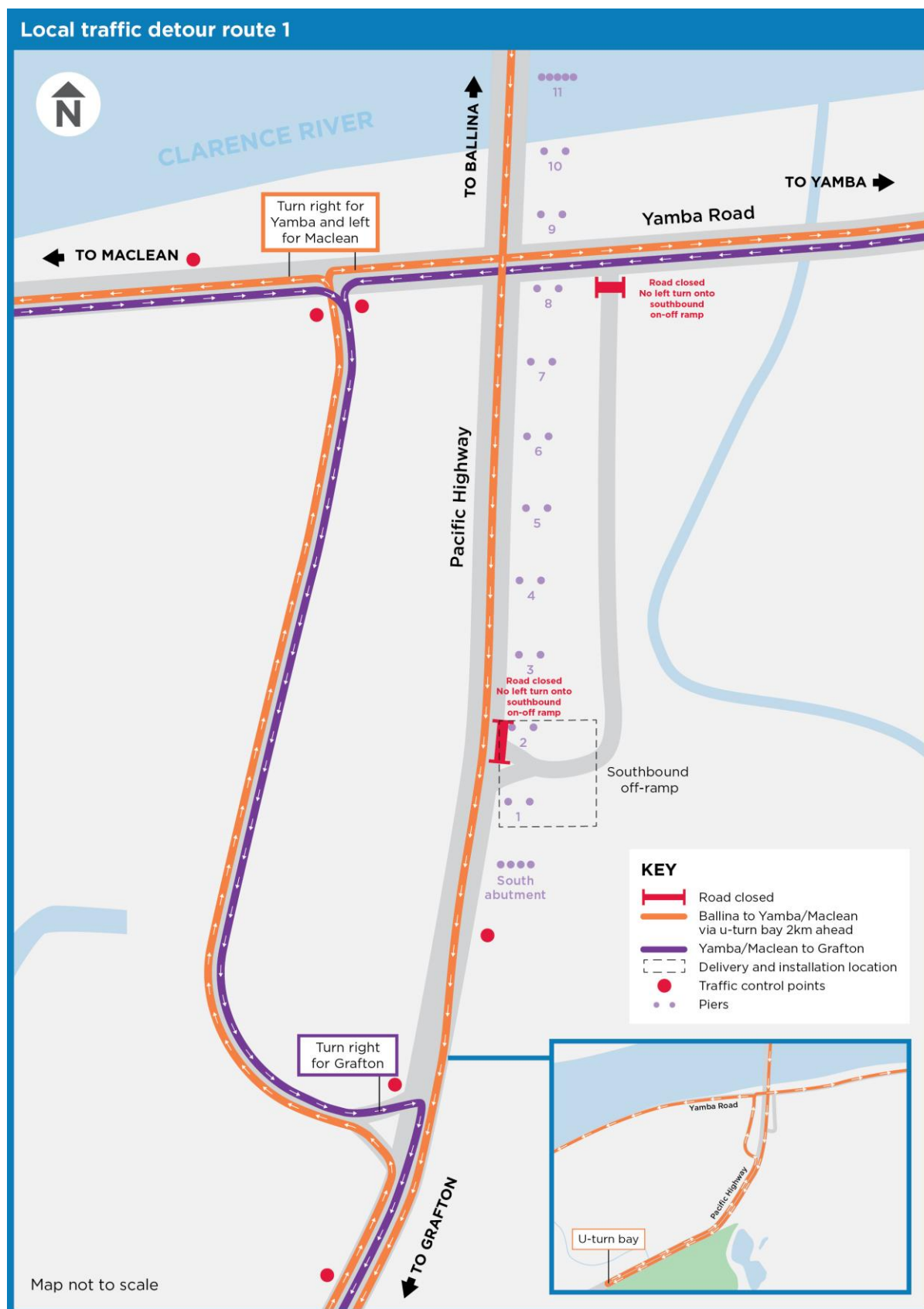
We apologise for any inconvenience and thank you for your patience during this important work.



If you need help understanding this information, please contact the Translating and Interpreting Service on 131 450 and ask them to call us on 1800 778 900.

Temporary local traffic detours

Local traffic detour route 1 will be in place for up to four nights as we install precast concrete pieces at Piers 1 and 2 outside of normal construction hours. This detour should be used from mid-March, weather permitting.



Local traffic detour route 2 will be in place for up to seven nights while we deliver and install precast concrete pieces at Piers 8 to 11 outside of normal construction hours. This detour should be used from early-April, weather permitting.

