



Australian Government

BUILDING OUR FUTURE



February 2018

Temporary diversion road traffic switch, at Harwood Island on Monday 12 February for the Woolgoolga to Ballina Pacific Highway upgrade

The Australian and NSW governments are jointly funding the \$4.36 billion Woolgoolga to Ballina Pacific Highway upgrade. Roads and Maritime Services' Pacific Highway Project Office, Pacific Complete and its contractor partners are working together to deliver the project.

The new temporary diversion road at Harwood Island for Pacific Highway traffic is almost complete. Motorists will be switched onto the new diversion road on Monday 12 February between 6pm and 7am, weather permitting.

To minimise impact on road users, some of this work will be carried out at night between 6pm and 7am, weather permitting. Work will include milling and asphaltting the road surface, painting line marking and connecting the road to the highway.

The new road will start just north of Watts Lane, Harwood and reconnect with the highway at the intersection of Serpentine Channel South Bank Road. This road is about 1.3 kilometres long and is about 40 metres west of the Pacific Highway. It also includes connections to private properties on both sides of the highway. A map has been provided to explain this change.

This traffic arrangement is temporary and will be removed when the upgrade is finished. It will allow us to maintain capacity on the road network while we safely build the new carriageway.

Traffic changes

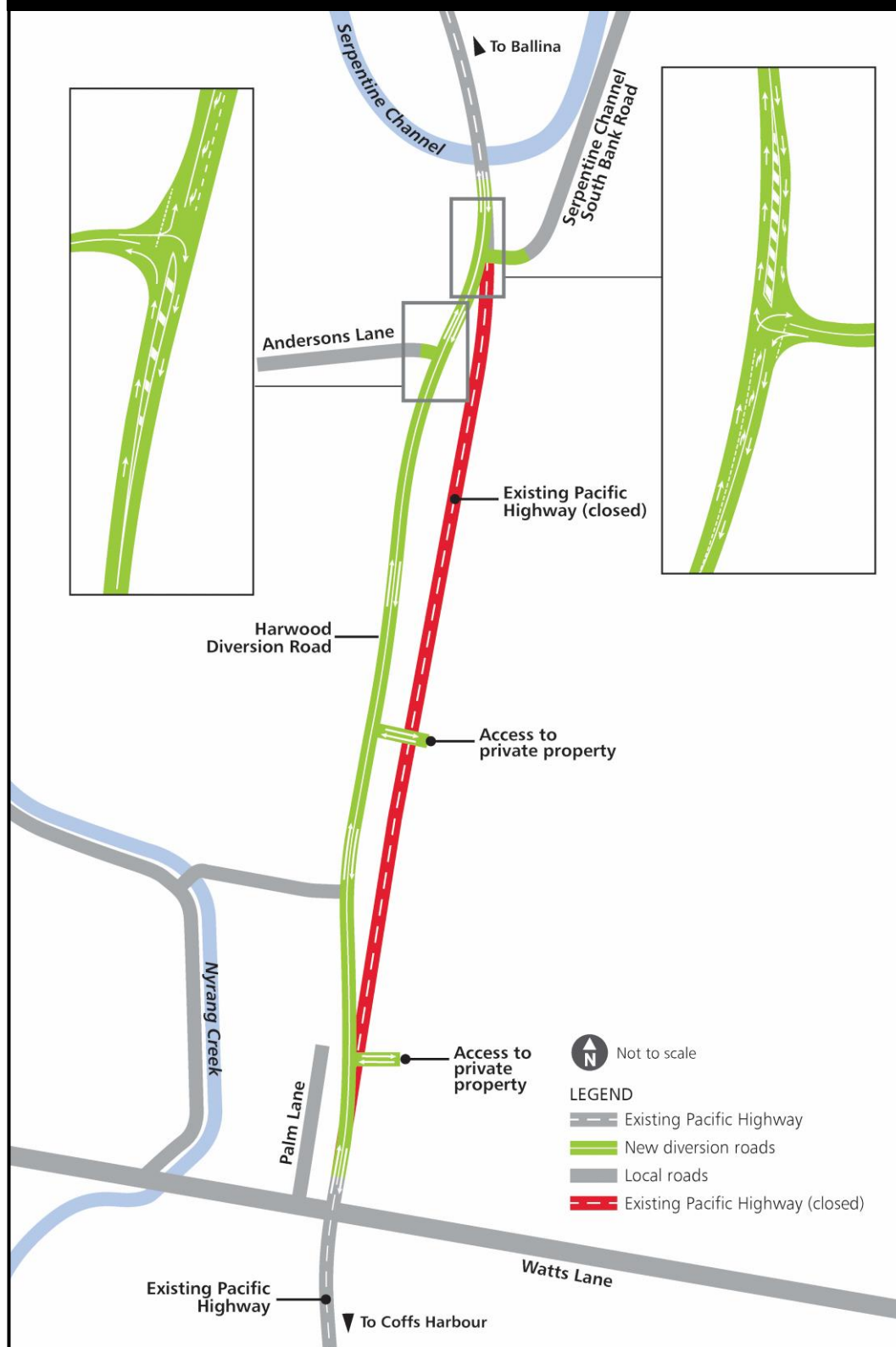
There will be some temporary changes while this work is carried out. Lane closures and signage will be in place and the speed limit will be reduced to 40 kilometres/hour, this may affect travel times. Please keep to speed limits and follow the direction of traffic controllers and signs. For the latest traffic information, visit www.livetraffic.com, download Live Traffic App or call the Transport Management Centre on 132 701.

Contact us

For more information about the work please contact the project team toll free on 1800 778 900, email W2B@pacificcomplete.com.au or visit the project website at www.rms.nsw.gov.au/W2B.

We apologise for any inconvenience and thank you for your patience during this important work.

New Harwood diversion road, Harwood Island



If you need help understanding this information, please contact the Translating and Interpreting Service on 131 450 and ask them to call us on 1800 778 900