



Australian Government

BUILDING OUR FUTURE



January 2018

Out of hours work on the Pacific Highway between Coolgardie and Pimlico from late January

The Australian and NSW governments are jointly funding the \$4.36 billion Woolgoolga to Ballina Pacific Highway upgrade. Roads and Maritime Services Pacific Highway Project Office, Pacific Complete and its contractor partners are working together to deliver the project.

The Woolgoolga to Ballina project team will carry out work on the Pacific Highway from Coolgardie to Pimlico intermittently at night to minimise traffic impacts and for the safety of motorists and workers.

Planned out of hours work

The work, which will be carried out outside of the project's normal construction hours, will be completed in stages during 2018. All work will be carried out in line with the project's Conditions of Approval and Construction Environmental Management Plan.

The first of three stages of out of hours work is traffic changes on Whytes Lane (east and west), Kays Road and construction access onto the highway. A further two stages of out of hours work will be carried out in July and November 2018, weather permitting. We will keep the community informed before future stages of work start. We have provided a map to show the location of the work area.

Stage one

From Tuesday 30 January for about 11 nights, the project team will carry out work at night for traffic changes at Kays Road, Coolgardie and Whytes Lane (east and west), Pimlico. This work is expected to take two weeks to complete, weather permitting.

The work will involve relocating concrete barriers at Kays Road, removing the existing centre median wire rope and existing pavement and building a new temporary road surface along a section of the Pacific Highway from Kays Road to Whytes Lane.

The work will require a lane closure and traffic control management on the Pacific Highway.

Night work activity will begin at 6pm and be complete no later than 7am. Work to be carried out includes:

- Setting up traffic control measures including mobile lighting towers
 - Delivering machinery to be used during the work
 - Removing the wire rope and existing pavement using excavators and profilers
 - Building a temporary road surface using asphaltting machinery
-

- Relocating barriers
- Line marking.

This work will involve the use of machinery including a road profiler – a machine that removes the top of the road surface so new pavement can be laid using an asphalt machine. This will generate some noise, but we will minimise its impact as much as possible by:

- Planning activities to complete work near residents earlier in the evening, where possible
- Shielding lights away from residences
- Locating equipment such as generators as far as possible from residences
- Turning off machinery when not in use
- Planning activities to minimise noise from reversing vehicles
- Monitoring noise
- Ensuring work is carried out in accordance with the project's approved Noise and Vibration Management Plan.

No other construction activities will be carried out in this area outside of normal construction hours at this time.

Traffic management

Traffic control will be in place for the duration of the work, however there may be some short delays for road users on the existing Pacific Highway. Access to properties will be maintained at all times. Residents are asked to travel through the area with care and observe all signposting, speed limits and any directions given by traffic controllers.

Work hours

Typically work will be carried out during the project's approved construction hours, which are:



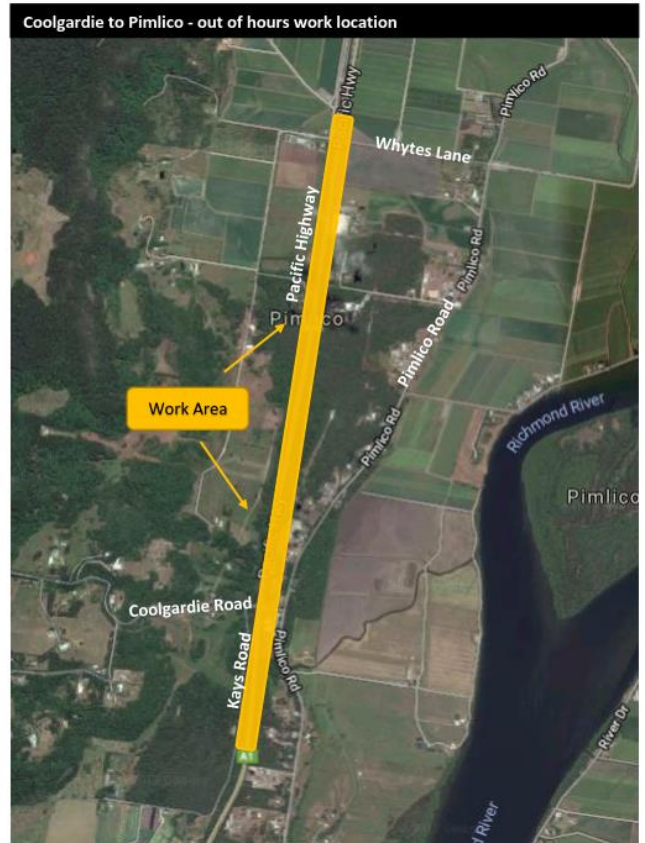
7am – 6pm Monday – Friday
8am – 5pm Saturdays

Nearby residents will be notified at least five working days in advance of any activities scheduled outside of these hours.

For more information

If you have any questions, please contact the Woolgoolga to Ballina project toll free line on 1800 778 900 dial 1, W2B@pacificcomplete.com.au or visit the project website rms.nsw.gov.au/W2B.

We apologise for any inconvenience and thank you for your patience during this important work.



If you need help understanding this information, please contact the Translating and Interpreting Service on 131 450 and ask them to call us on 1800 778 900.