

March 2018

Controlled blasting near Bondi Hill Road, Tyndale for the Woolgoolga to Ballina Pacific Highway upgrade

The Australian and NSW governments are jointly funding the \$4.36 billion Woolgoolga to Ballina Pacific Highway upgrade. Roads and Maritime Services' Pacific Highway Project Office, Pacific Complete and its contractor partners are working together to deliver the project.

As part of work to build the new highway, from early March 2018 the project team will be carrying out controlled blasting near Bondi Hill Road, in Tyndale up to two times per week for three months, weather permitting.

Controlled blasting will take about 30 minutes with up to two blasts per week, weather permitting.

We will provide advance notice of all controlled blasting activities, road closures and changes to dates and times on an electronic message board located on the Pacific Highway at Tyndale and on the project website.

The project team will liaise with residents and property owners within one kilometre of the blast area to provide them with advance notice 24 hours before each blast takes place. We have included a map to show the location of the controlled blasting and attached a fact sheet.

Traffic changes

There will be some temporary traffic changes while this work is carried out to ensure the safety of road users and workers.

During blasting, restricted access will be in place around the worksite. Traffic delays of up to five minutes can be expected on the Pacific Highway at Tyndale when controlled blasting is carried out.

Please keep to speed limits and follow the direction of traffic controllers and signs. For the latest traffic updates call 132 701, visit livetraffic.com or download the Live Traffic NSW App

Work hours

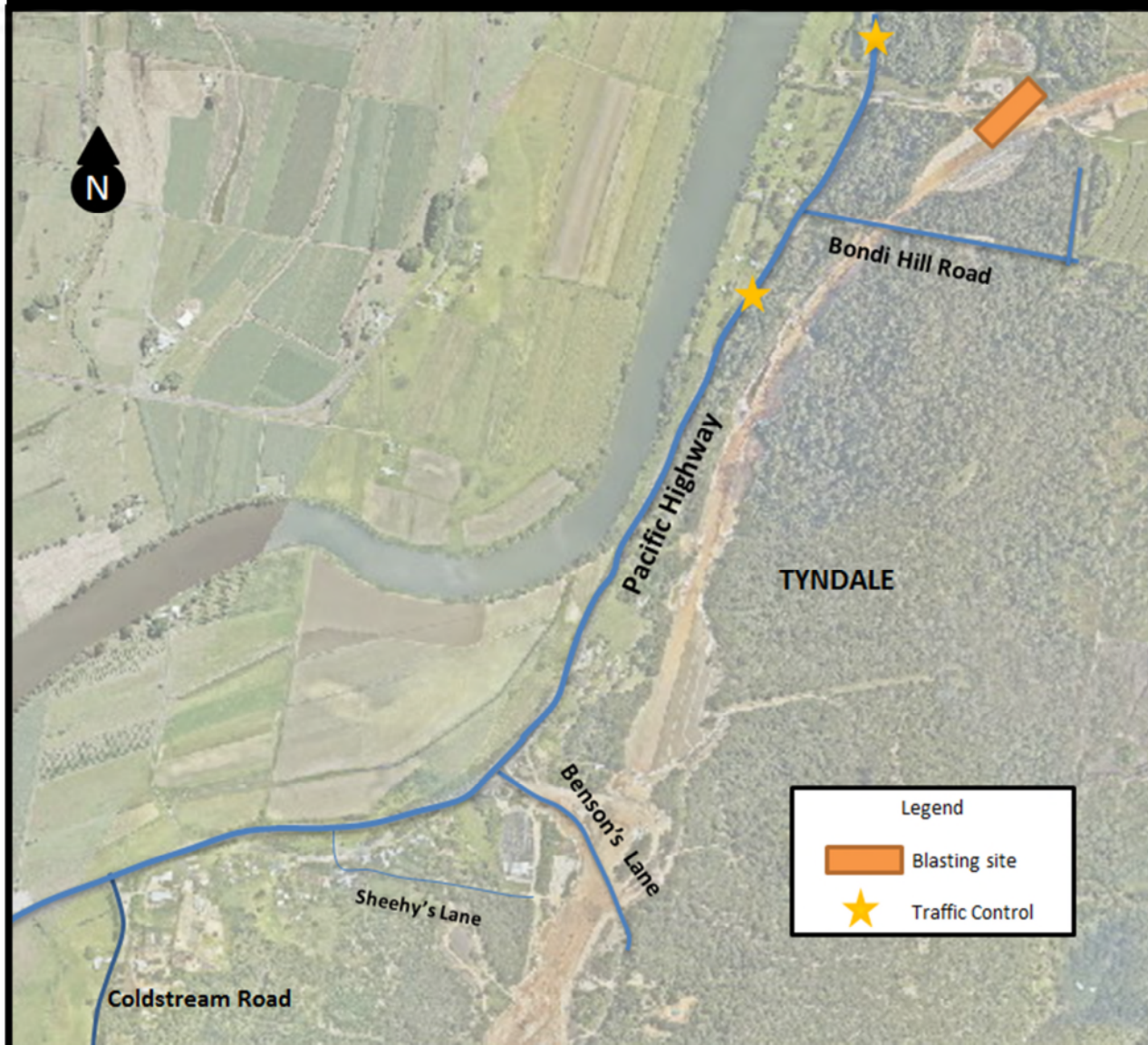
Typically work will be carried out during the project's approved construction hours, which are:



7am – 6pm Monday – Friday
8am – 5pm Saturdays

In areas where residents live more than 200m from the work area, extended work hours are allowed from Monday to Friday between 6am and 7am and 6pm and 7pm. Nearby residents will be notified at least five working days in advance of any activities scheduled outside of these working hours.

Trial blast and blast location near Bondi Hill Road, Tyndale



For more information

If you have any questions, please contact the Woolgoolga to Ballina project toll free line on 1800 778 900 dial 1, W2B@pacificcomplete.com.au or visit the project website rms.nsw.gov.au/W2B.

We apologise for any inconvenience and thank you for your patience during this important work.



If you need help understanding this information, please contact the Translating and Interpreting Service on 131 450 and ask them to call us on 1800 778 900.