



Pacific Highway

Wells Crossing to Iluka Road Upgrade

Tucabia Community Liaison Group Meeting – 24 February 2005

Roads and Traffic Authority



Tanyia Tuckey

Community Liaison Manager, SKM



Agenda

- › Welcome - update from members
- › Community communication - CLG members
- › Update on consultation activity
- › Study area constraints
- › Highway design parameters
- › Group activity
- › Questions and answers
- › Close



Feedback from CLG members

- › Update from each CLG member
- › Community communication - CLG members' obligations
- › Publicising CLG members details
- › Meeting times



Community consultation to date

Correspondence

175 Phone calls

116 Emails

26 Letters

24 Faxes



Community consultation to date

- » CLG nomination
- » Further information
- » CLG
- » Impact on Gulmarrad and James Creek
- » Add to mailing list
- » Noise
- » Route location
- » Property impact
- » Property/land values
- » Flora and fauna impacts



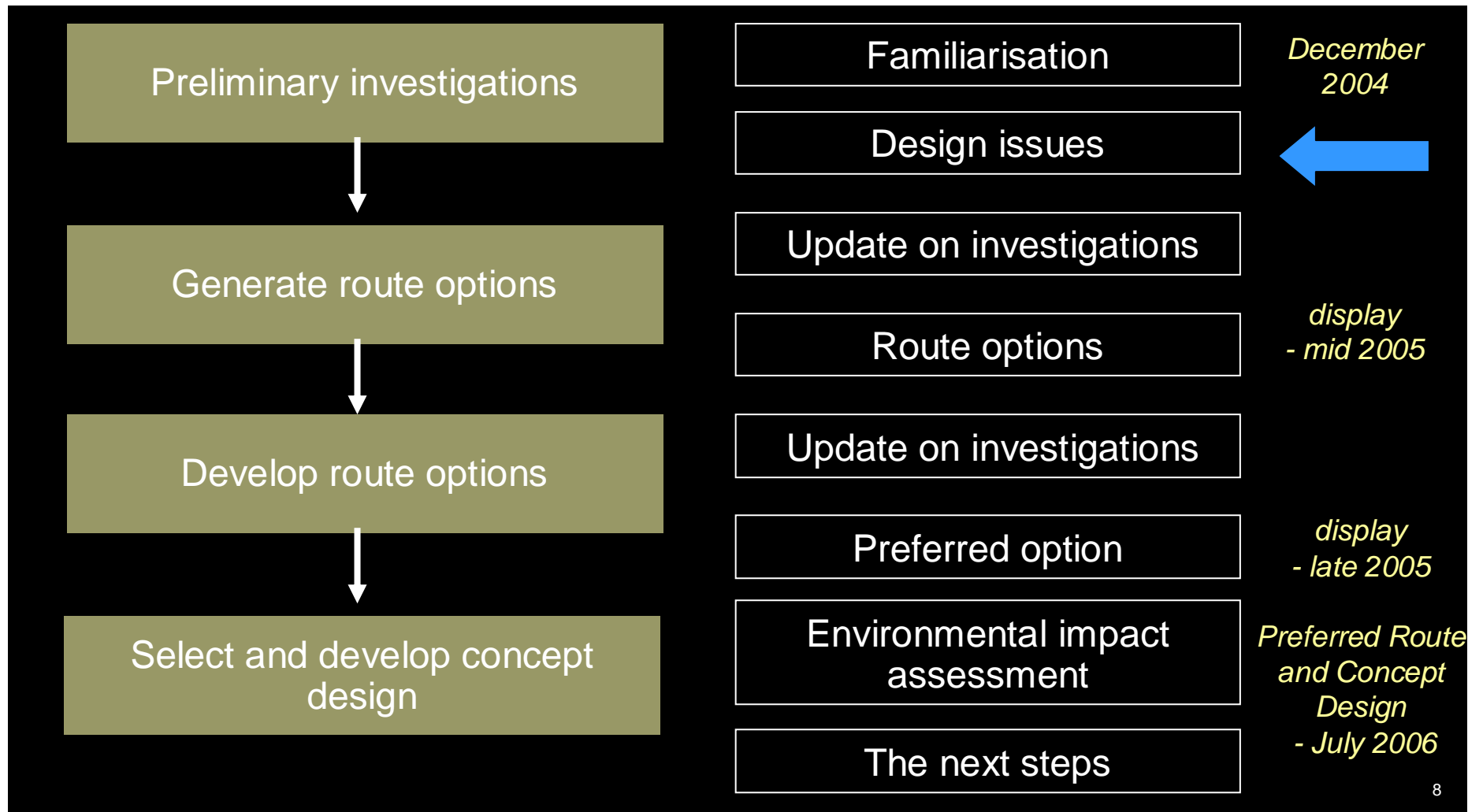
Jo Moss

Project Manager, SKM

Wells Crossing to Iluka Road Upgrade Project

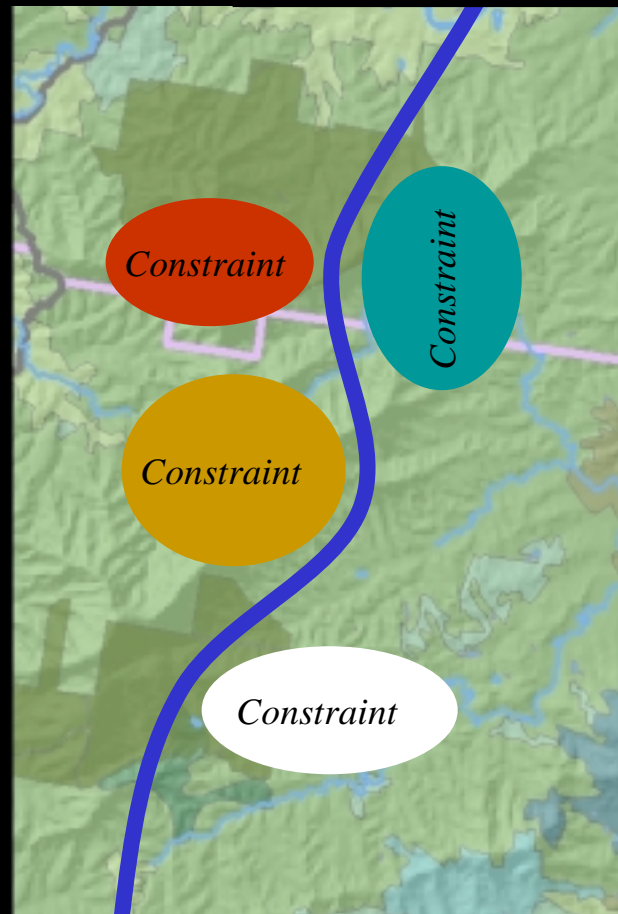


Study process and progress



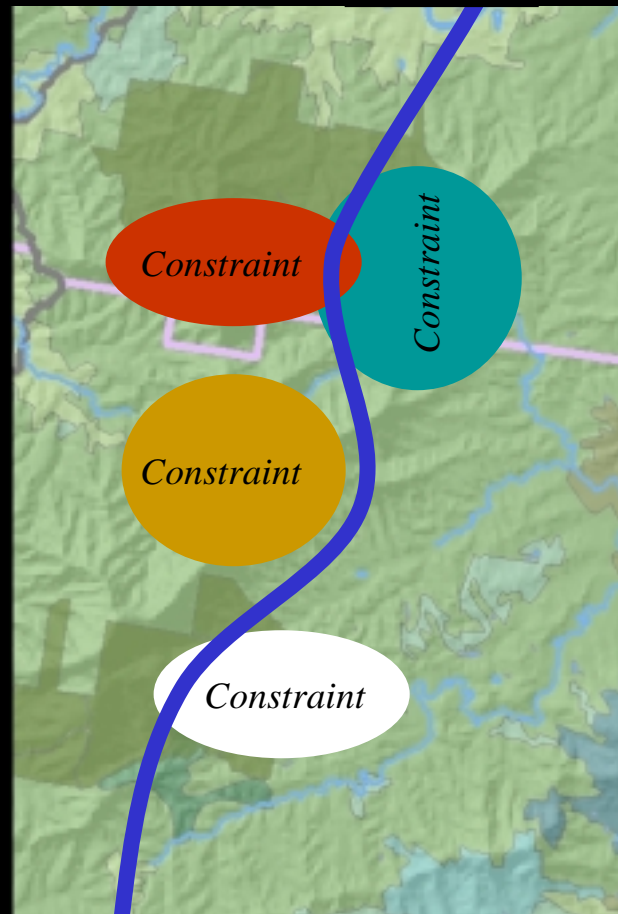
Route option identification

Ideal
situation



Route option identification

Likely
situation





Peter Black

Project Development Manager

Pacific Highway Office, RTA

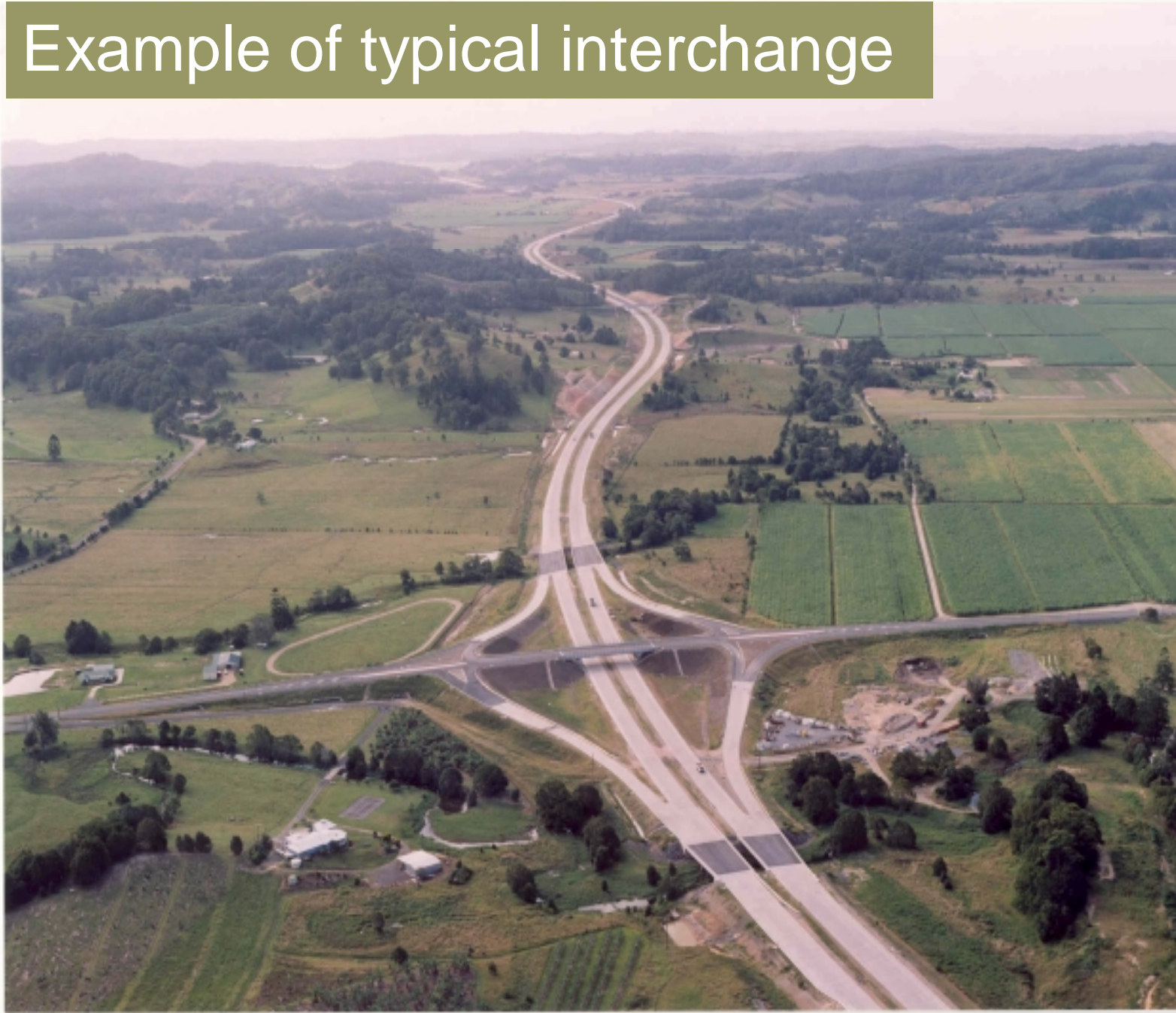
Example of typical alignment





Example of how local access can be maintained in highway design

Example of typical interchange

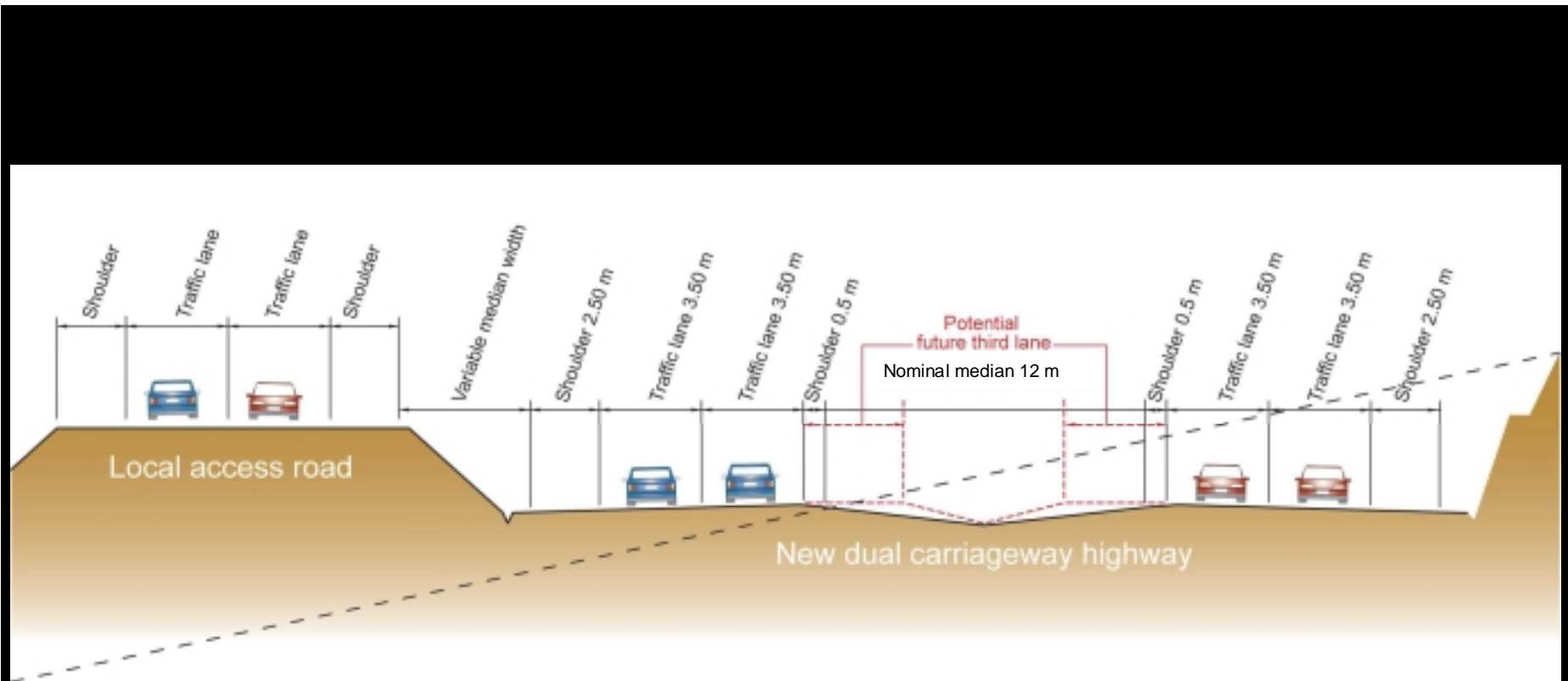




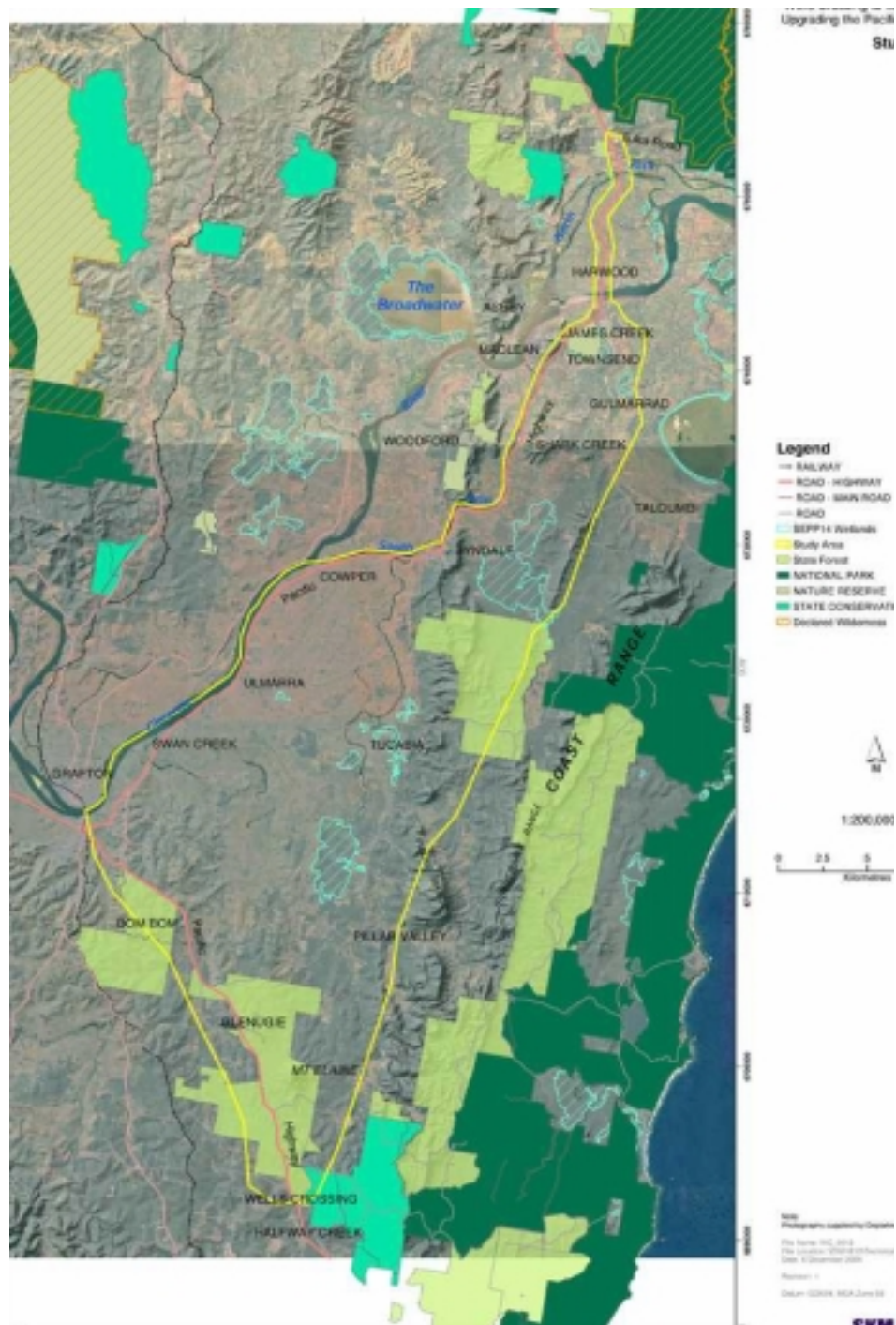
Example of an
upgraded
highway

Wells Crossing to Iluka Road Upgrade Project

Typical cross-section



Study area





Group Activity

Understanding the issues



- › Increase understanding of the issues
- › Understanding the design process
- › Discussion of any ideas you may have
- › All thoughts are welcome
- › There are no wrong ideas
- › Respect other people's views



Tanyia Tuckey

Community Liaison Manager, SKM



CLG members questions?



How to contact the project team

› Freecall number -

1800 557 673

› Web-site -

www.rta.nsw.gov.au/pacific

› Email address -

wellscrossingtoiluka@skm.com.au



Closing remarks...

...Thank you.