

Attachment I - CLG Presentation



**Pacific Highway**

**Wells Crossing to Iluka Road Upgrade**

Tucabia Community Liaison Group Meeting – 9 December 2004

Roads and Traffic Authority

# Wells Crossing to Iluka Road Upgrade



*Dee Elliott*

*Facilitator*

Sinclair Knight Merz

# Agenda



- › Introductions
- › Commitment to consultation
- › The CLG process
- › Pacific Highway Upgrade Strategy
- › Background to the Project
- › Project team and Project overview
- › Community information sessions feedback
- › Brainstorming and ranking activity
- › Close

# Welcome and Introductions



- › Introduce project team members that are present
- › Introduce CLG members
  - » *name and where you live*
  - » *why you chose to become a member*
  - » *who you are representing and how*
  - » *any previous CLG experience*

# Community Liaison Group Process



- › **The RTA Charter**
  - » **intent**
  - » **clarification**
  
- › **Your communication needs**

# Wells Crossing to Iluka Road Upgrade



*Peter Black*

*Project Development Manager*

Pacific Highway Office, RTA

# Pacific Highway Upgrading Community Involvement



## Commitment to Consultation

# Pacific Highway Upgrading Successful Consultation



What is successful consultation?

- ✓ The community is involved early
- ✓ A cross section of the community are involved
- ✓ When consultation is one of many influencers in the process
- ✓ The community needs and issues are considered
- ✓ When communication is two-way





Upgrading the Pacific Highway –

Key Date:

Preferred route and concept design by July 2006

# Why are we fast-tracking the Upgrading Program



Increasing pressure to accelerate completion of dual carriageway :

- » Road crashes involving fatalities still high
- » Increased travel demand from:
  - Rapid growth on the North Coast
  - Interstate traffic
- » Loss of amenity to local communities
  - Highway noise
  - Local/Through traffic interaction

# Overview of the Pacific Highway Upgrading Program



- › Planning for this project is being funded by the State Government as part of its \$1.6 billion contribution to the ten year upgrading program (\$2.2 billion total)
- › Future (Beyond 10 Year Program):
  - » State Government has given a commitment to continue upgrading
  - » Federal Government has recently released AusLink White Paper which :
    - » - maintains \$60 million/year for years 9 and 10 of the current program
    - increase contribution to \$160 million /year over the following 3 years

# Pacific Highway Upgrading Program Objectives



## Hexham to Queensland Border

- ✓ Significantly reduces road crashes and serious injuries
- ✓ Reduced travel times and delays
- ✓ Reduced freight transport costs
- ✓ A community satisfied with the physical development of the route
- ✓ A route that supports economic development
- ✓ Considers the environment
- ✓ Achieves value for money

# Wells Crossing to Iluka Road Specific Project Objectives



## ***SIGNIFICANTLY REDUCES ROAD CRASHES AND SERIOUS INJURIES***

- ✓ Target crash rate of min 15 per 100MVK
- ✓ 110 km/h design speed
- ✓ Minimise access points
- ✓ Can be upgraded to a Freeway standard

# Wells Crossing to Iluka Road Specific Project Objectives



## ***REDUCE TRAVEL TIMES AND DELAYS***

- ✓ Maximises reduction in travel time
- ✓ Minimise closures and delays from flooding
- ✓ Minimise delay and disruption during construction

# Wells Crossing to Iluka Road Specific Project Objectives



## ***REDUCED FREIGHT TRANSPORT COSTS***

- ✓ Reduces overall freight transport costs
- ✓ Meets or exceeds B-Double requirements

# Wells Crossing to Iluka Road Specific Project Objectives



## *A COMMUNITY SATISFIED WITH THE PHYSICAL DEVELOPMENT OF THE ROUTE*

- ✓ Minimise traffic noise, intrusion, severance and access patterns
- ✓ Maintain access to properties during construction



# Wells Crossing to Iluka Road Specific Project Objectives



## *A ROUTE THAT SUPPORTS ECONOMIC DEVELOPMENT*

- ✓ Access to local and regional centres of economic importance
- ✓ Minimises impact on business/service facilities
- ✓ Provide a level of flood immunity

# Wells Crossing to Iluka Road Specific Project Objectives



## *CONSIDERS THE ENVIRONMENT*

- ✓ Minimises the effects on sensitive habitats and native vegetation
- ✓ Minimises impact on National Parks
- ✓ Satisfies the principles of Ecological Sustainable Development

# Wells Crossing to Iluka Road Specific Project Objectives



## *VALUE FOR MONEY*

- ✓ Minimises Whole of Life Costs
- ✓ Benefit to Cost Ratio of greater than 2
- ✓ Supports NSW Government and Clarence Valley Council development policies

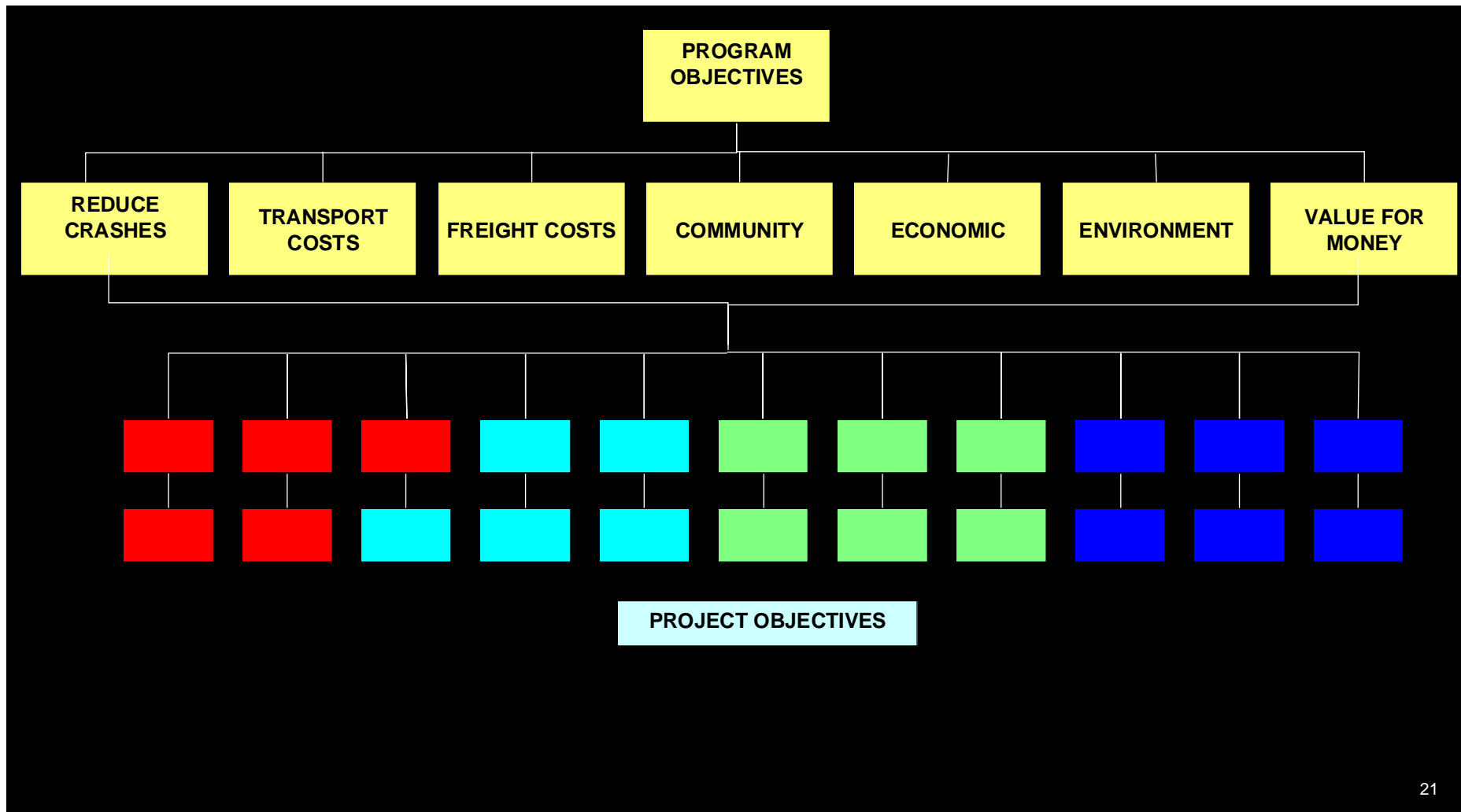
# Categorising Project Objectives



Project Objectives can be placed into four categories

- 1. Social**
- 2. Environmental**
- 3. Functional (Engineering)**
- 4. Economic**

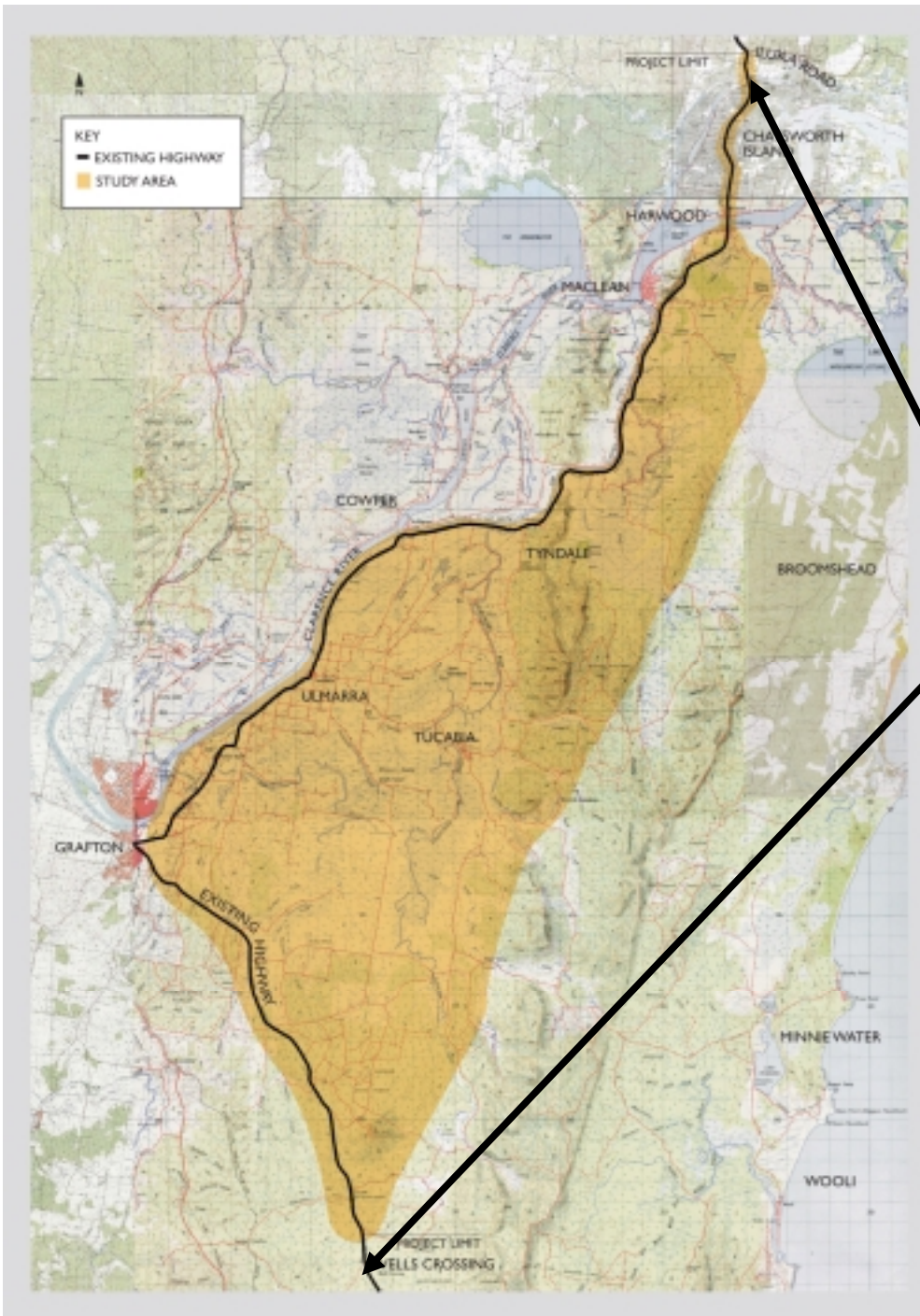
# The Big Picture



# Pacific Highway Upgrading Study Area



So what is a study area?



# Study Area



› Northern project limit  
 - Iluka Road

Southern project  
 limit - Wells  
 Crossing

Approx 80 km of  
 existing highway

# Wells Crossing to Iluka Road



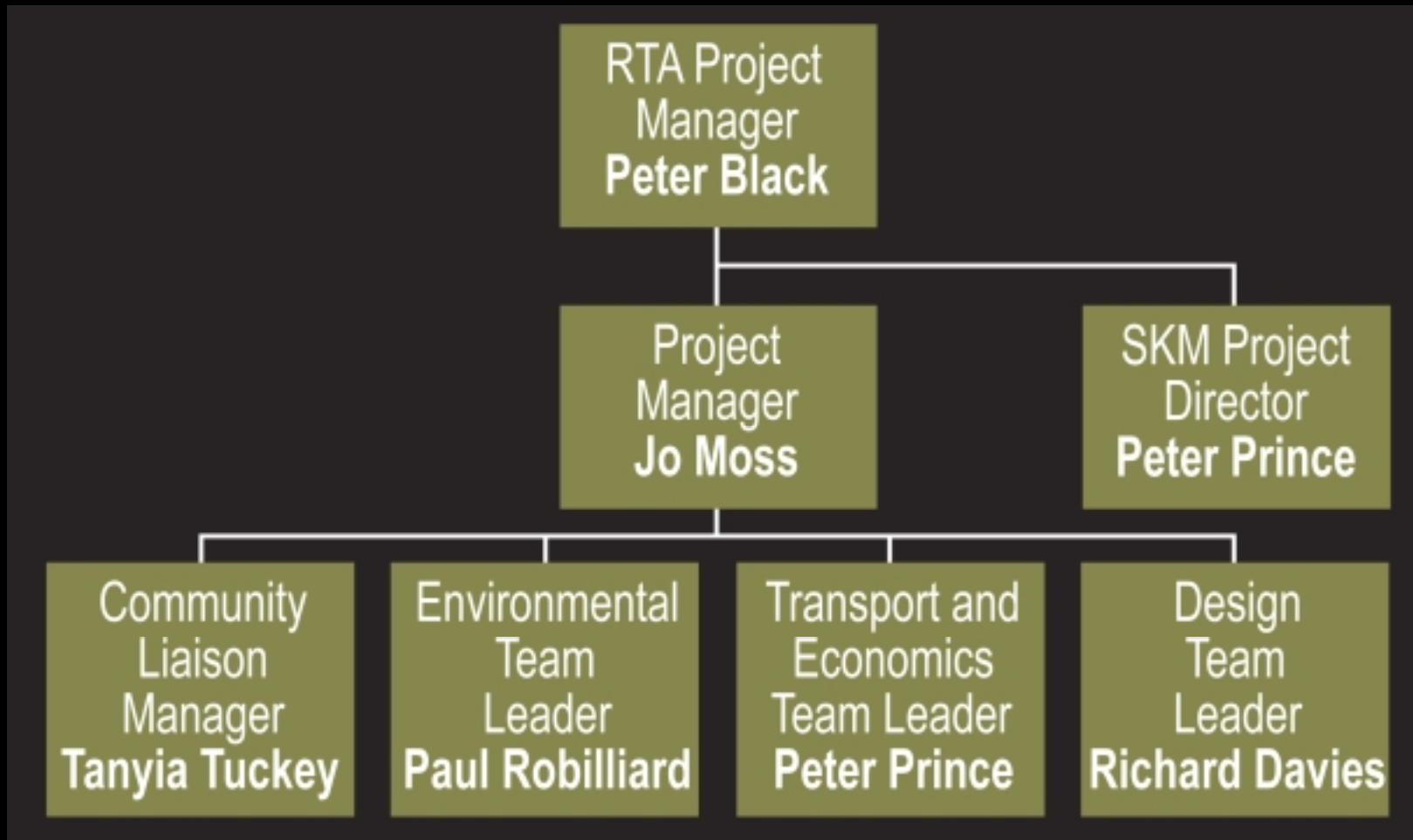
*Jo Moss*

Project Manager

Sinclair Knight Merz



# Wells Crossing to Iluka Road Upgrade Study Team



# Wells Crossing to Iluka Road Scope of Investigations (1)



## › **Transportation**

- » highway safety
- » future population and employment areas
- » good access to existing centres (Grafton, Maclean, Ulmarra ...)
- » accommodate travel improvements for regional and local traffic

## › **Economics**

- » cost and benefits of the upgraded highway
- » potential business and land use impacts
- » regional economic development benefits
- » construction employment benefits

# Wells Crossing to Iluka Road Scope of Investigations (2)



## › **Environmental**

- » Flora and fauna
- » Heritage - Indigenous and non-indigenous sites and areas
- » Noise impacts to residences and other noise sensitive land uses
- » Air quality and greenhouse emissions, climate
- » Water quality

# Wells Crossing to Iluka Road Scope of Investigations (3)



- › **Land Use, planning and zoning**
  - » Existing and future land use
  - » Cane farming and other rural production
  - » Forestry
  - » Rural residential, urban areas and villages
  - » Highway related uses - motels and truck stops
  
- › **Social**
  - » Visual and amenity impacts
  - » Community impacts, severance
  - » Local access
  - » Business impacts

# Wells Crossing to Iluka Road Scope of Investigations (4)



## › Design

- » **Engineering design - highway and road corridor, local access**
- » **Aerial photography**
- » **Survey**
- » **Existing highway and bridge condition**
- » **Geotechnical**
- » **Flooding**
- » **Visual and amenity impacts**
- » **Collation of data and information in GIS**
- » **Development of options**
- » **Costing of options**

# Wells Crossing to Iluka Road Anticipated CLG Meetings



Preliminary investigations



Generate route options



Develop route options



Select and develop  
concept design

Familiarisation

Design issues

Update on investigations

Route Options

Update on investigations

Preferred Option

Environmental impact  
assessment

The next steps

*December  
2004*

*display  
- mid 2005*

*display  
- late 2005*

*Preferred Route  
and Concept  
Design  
- July 2006*

# Wells Crossing to Iluka Road



*Dee Elliott*

*Facilitator*

Sinclair Knight Merz

# Community Information Sessions



What do you believe are the

- › key criteria for a successful project
- › issues regarding this project
- › information needs
- › anything else?



# Key Issues from Community Sessions



- › Key issues from the Community Information Sessions

# Key Issues from Community Sessions



- › Do these issues match this groups perceptions?
- › How would you rank the issues in order of importance

## How to contact the project team



› Freecall number -

1800 557 673

› Web-site -

[www.rta.nsw.gov.au/pacific](http://www.rta.nsw.gov.au/pacific)

› Email address -

[wellscrossingtoiluka@skm.com.au](mailto:wellscrossingtoiluka@skm.com.au)

# Wells Crossing to Iluka Road Upgrade



***Closing remarks...***

***...Thank you.***