



Pacific Highway Wells Crossing to Iluka Road Upgrade

Maclean Community Liaison Group Meeting – 22 February 2005

Roads and Traffic Authority



Tanyia Tuckey

Community Liaison Manager, SKM



Agenda

- › Welcome - update from members
- › Community communication - CLG members
- › Update on consultation activity
- › Study area constraints
- › Highway design parameters
- › Group activity
- › Questions and answers
- › Close



Feedback from CLG members

- › Update from each CLG member
- › Community communication - CLG members' obligations
- › Publicising CLG members details
- › Meeting times



Community consultation to date

Correspondence

175 Phone calls

116 Emails

26 Letters

24 Faxes



Community consultation to date

- » CLG nomination
- » Further information
- » CLG
- » Impact on Gulmarrad and James Creek
- » Add to mailing list
- » Noise
- » Route location
- » Property impact
- » Property/land values
- » Flora and fauna impacts



Jo Moss

Project Manager, SKM

Wells Crossing to Iluka Road Upgrade Project



Study process and progress

Preliminary investigations



Generate route options



Develop route options



Select and develop concept design

Familiarisation

December 2004

Design issues



Update on investigations

Route options

*display
- mid 2005*

Update on investigations

Preferred option

*display
- late 2005*

Environmental impact
assessment

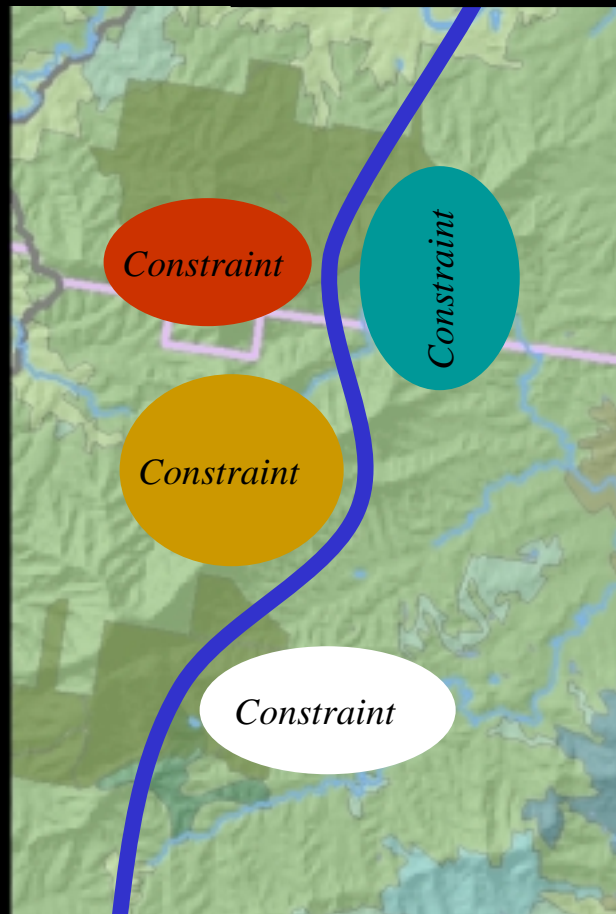
*Preferred Route
and Concept
Design*

The next steps

- July 2006

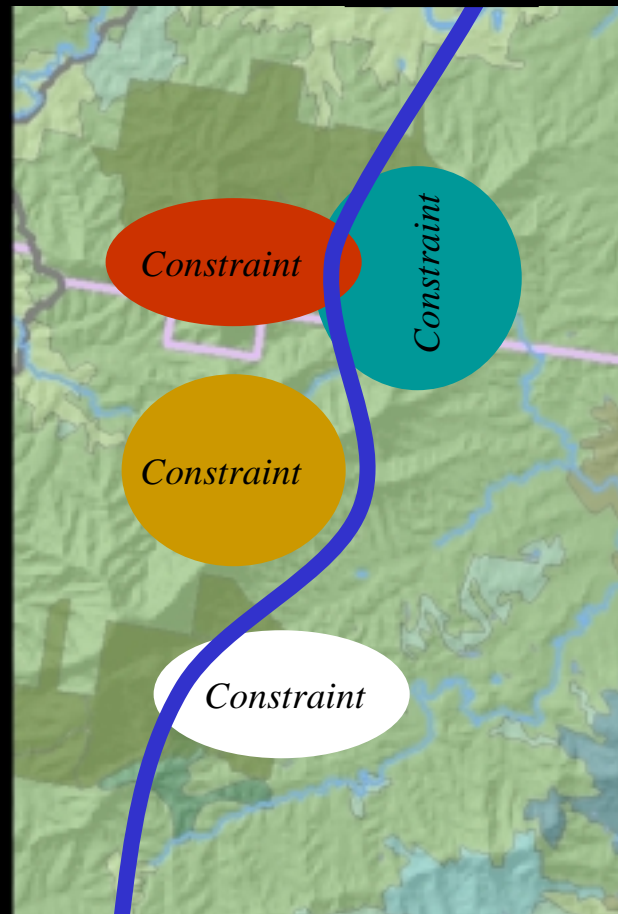
Route option identification

Ideal
situation



Route option identification

Likely
situation





Peter Black

Project Development Manager

Pacific Highway Office, RTA

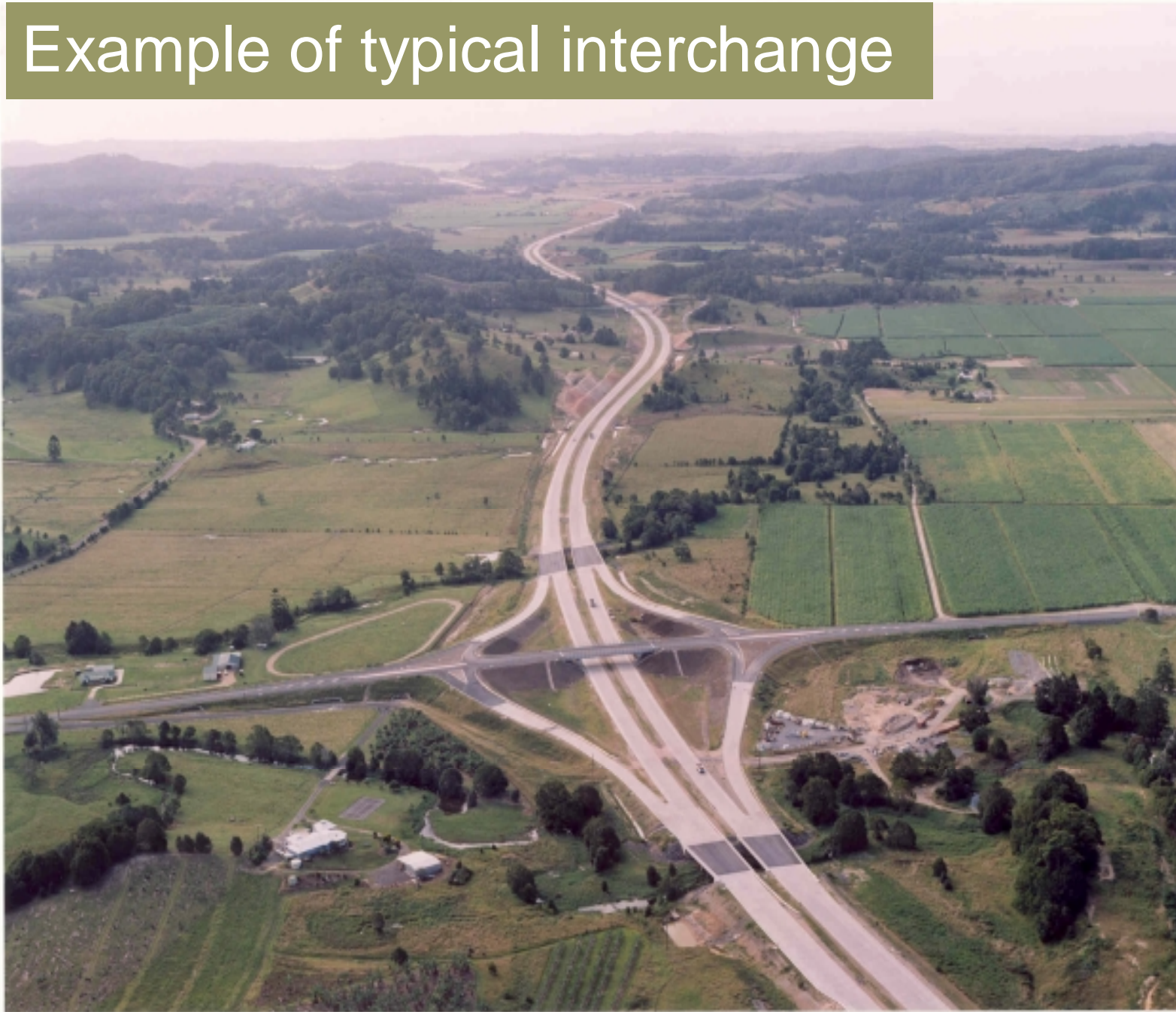
Example of typical alignment





Example of
how local
access can be
maintained in
highway design

Example of typical interchange



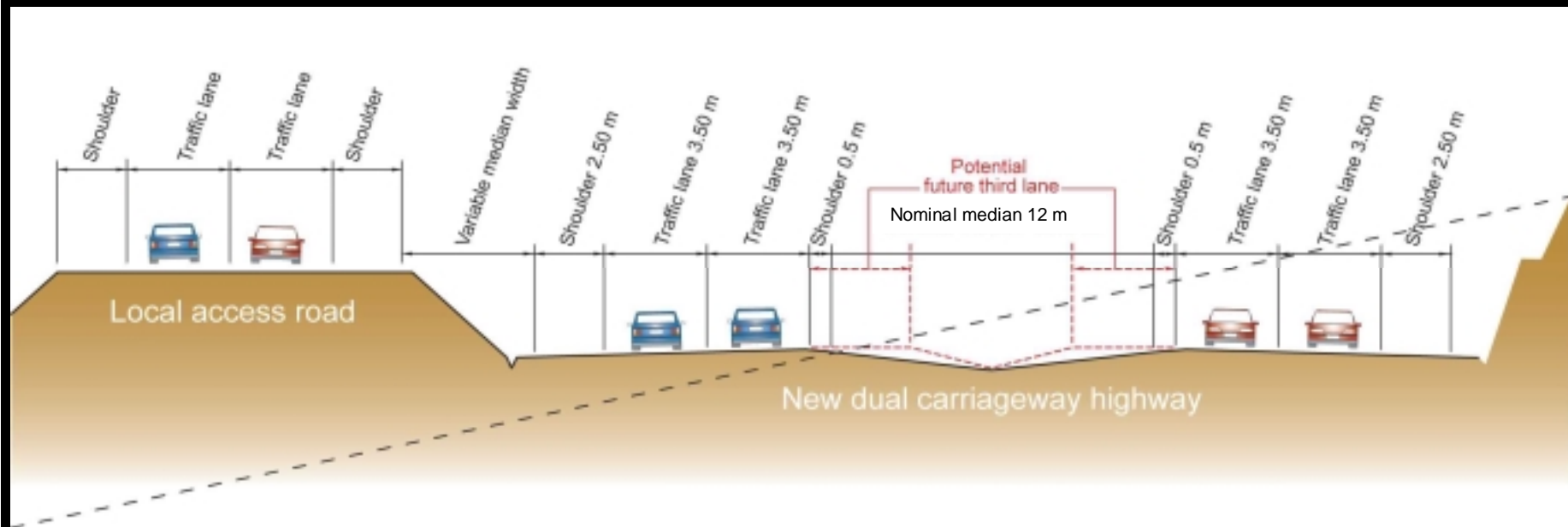


Example of an
upgraded
highway

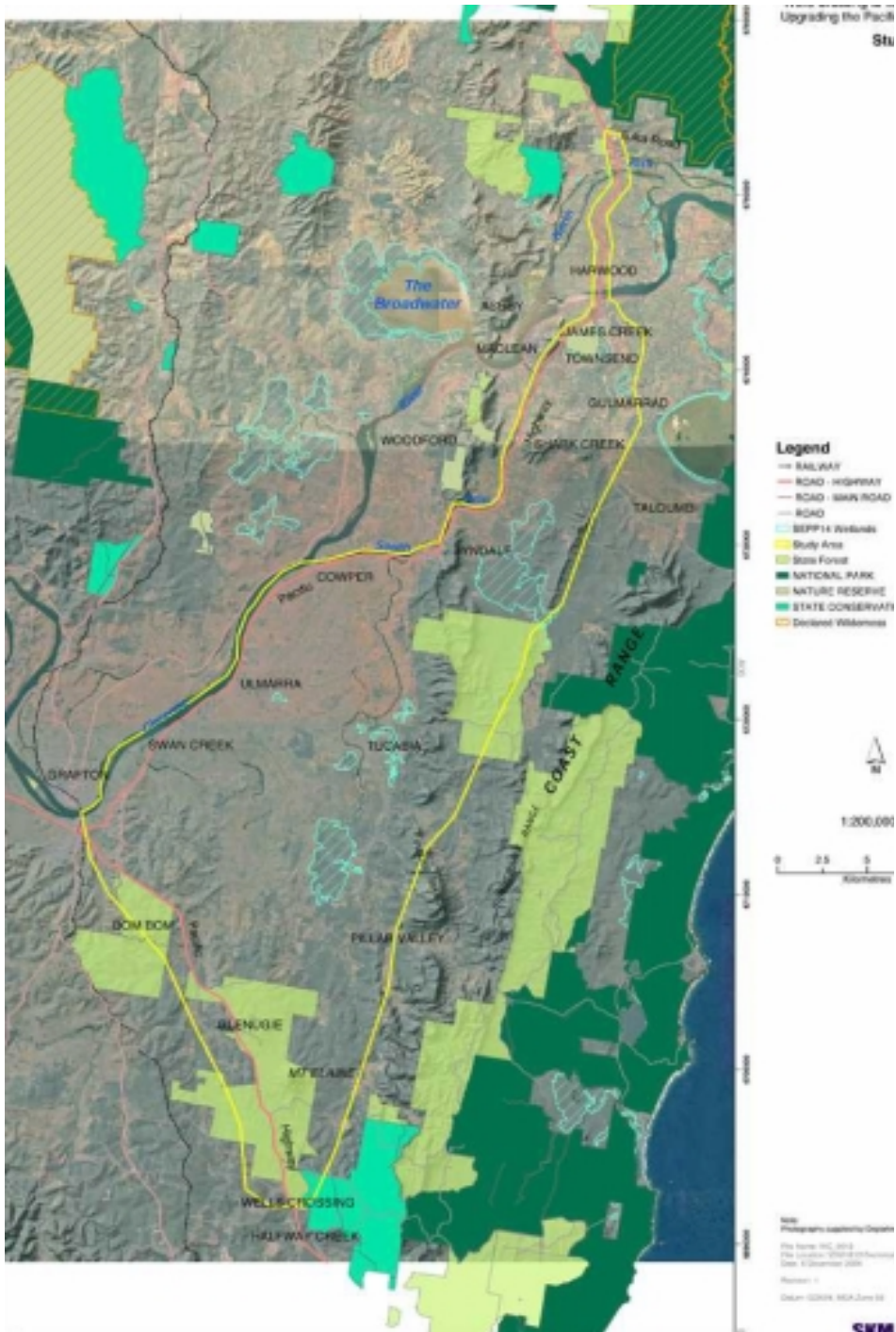
Wells Crossing to Iluka Road Upgrade Project



Typical cross-section



Study area





Group Activity



Tanyia Tuckey

Community Liaison Manager, SKM



CLG members questions?

How to contact the project team

› Freecall number -

1800 557 673

› Web-site -

www.rta.nsw.gov.au/pacific

› Email address -

wellscrossingtoiluka@skm.com.au



Closing remarks...

...Thank you.